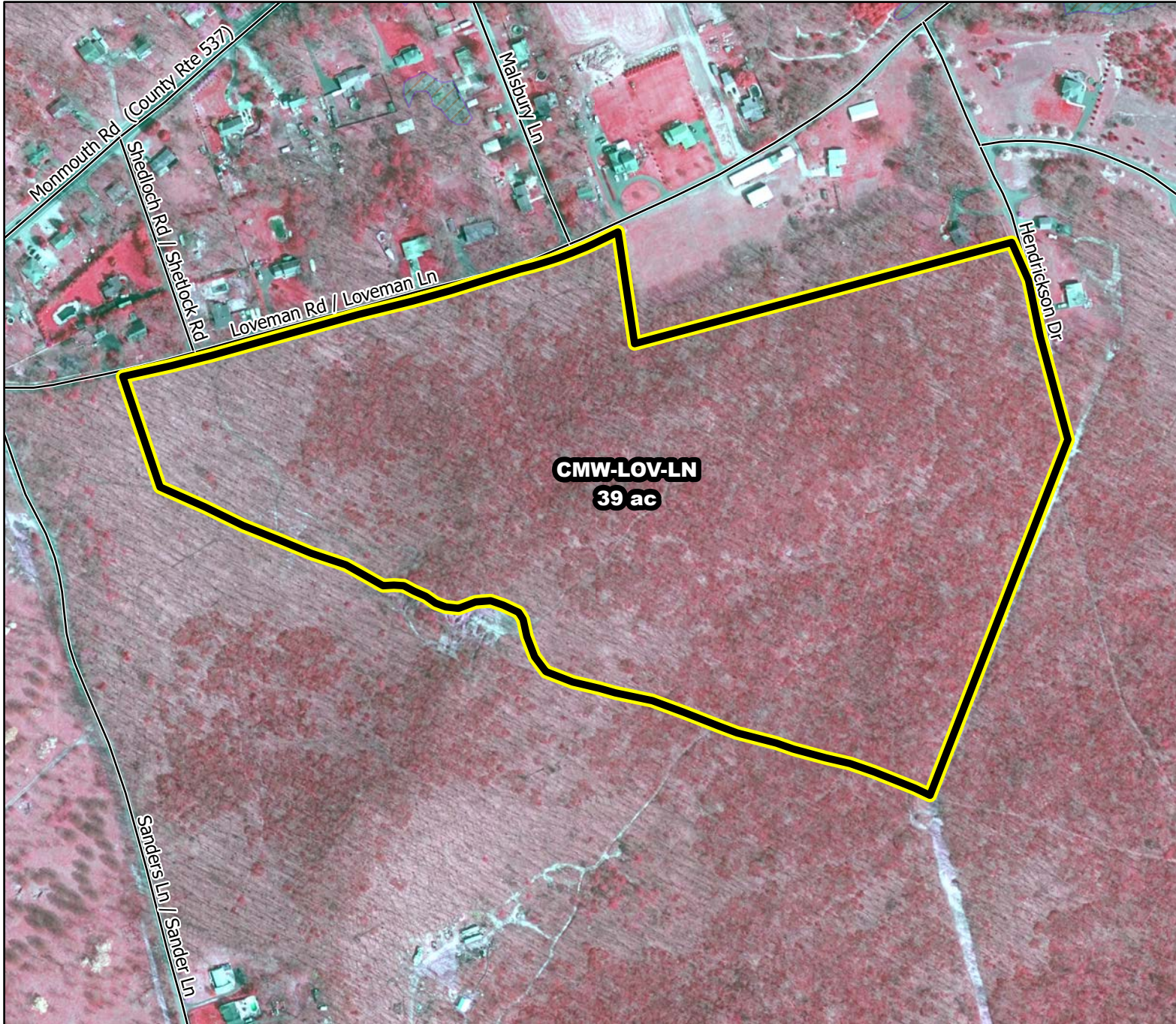




# Prescribed Burning LMR Determinations

Last Approved Year:  
**2023**



## CMW-LOV-LN

**Approved**

**ONLM COMMENTS:**

Uplands

**ENSP COMMENTS:**

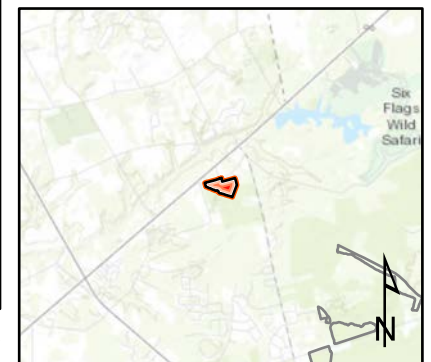
no comment

**HPO COMMENTS:**

no comment

**SFS COMMENTS:**

Other LMR constraints are met



Proposed units



Wetlands

300 ft

MTC, NJFFS  
2021.01.06