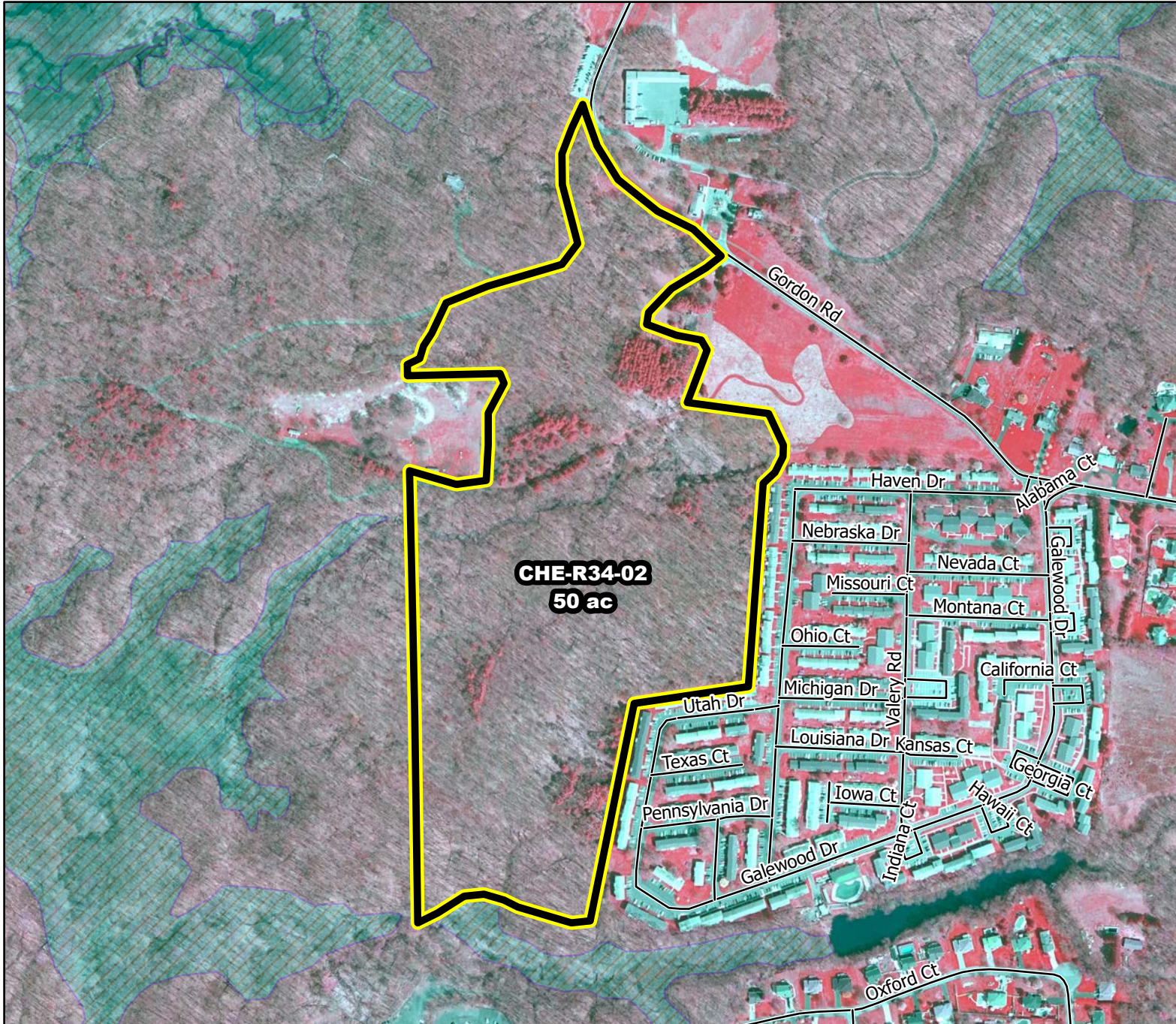




Prescribed Burning LMR Determinations

Last Approved Year:
2023



CHE-R34-02
50 ac

CHE-R34-02

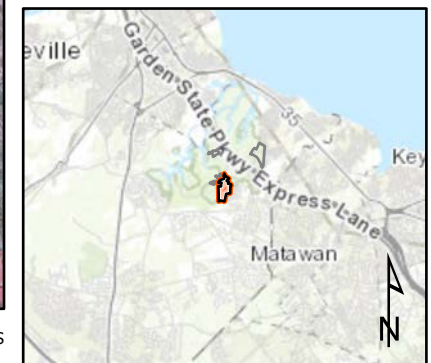
**Conditionally
Approved**

ONLM COMMENTS:
2018: Resolved, Will use a leaf-blower and handtools in areas of steep slopes and ravine.

ENSP COMMENTS:
Create Plow Lines 11/15 - 3/15 ONLY

HPO COMMENTS:
no response

SFS COMMENTS:
no comment



Proposed units Wetlands

600 ft

MTC, NJFFS
20210105