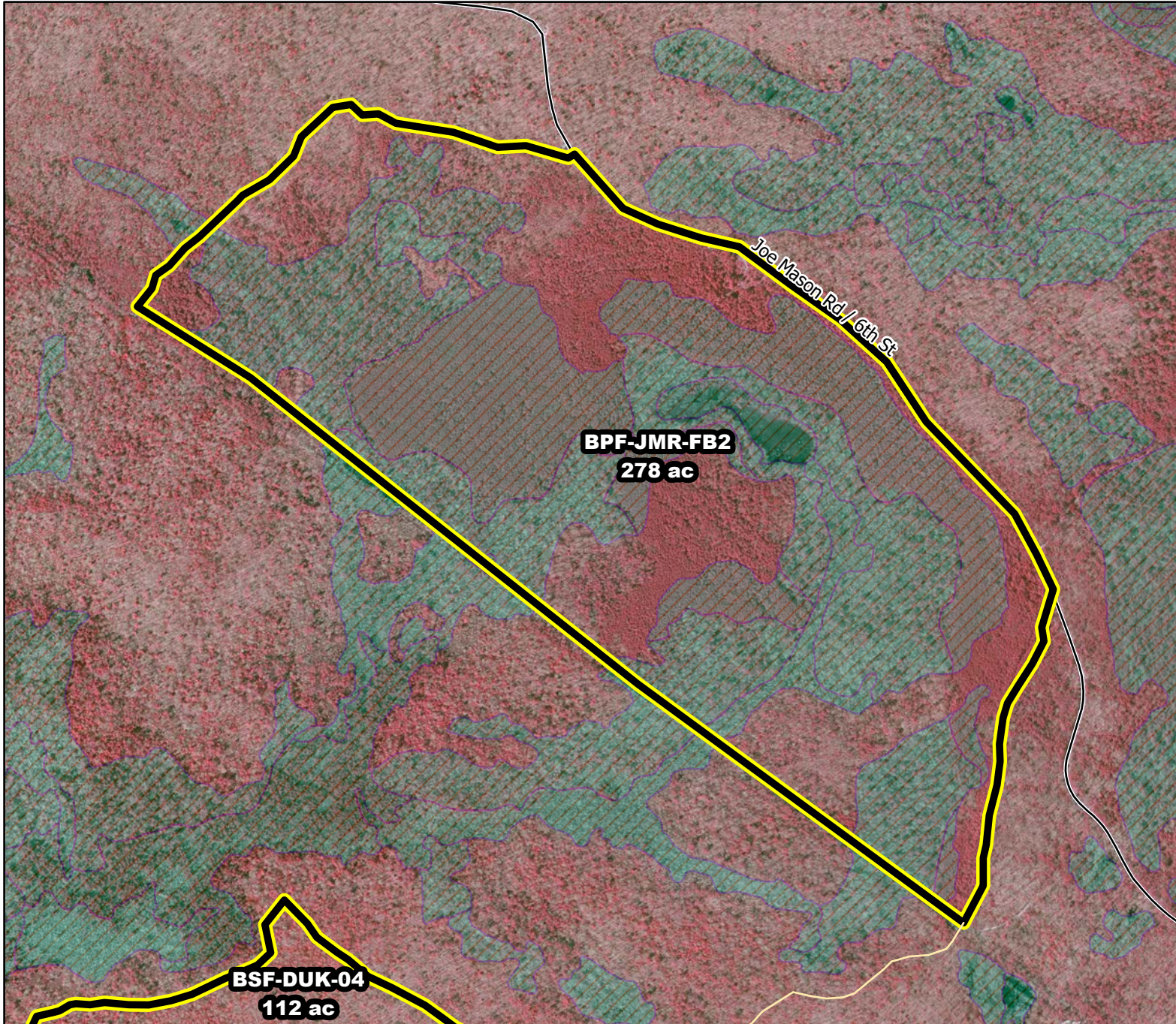




Prescribed Burning LMR Determinations

Last Approved Year:
2023



BPF-JMR-FB2

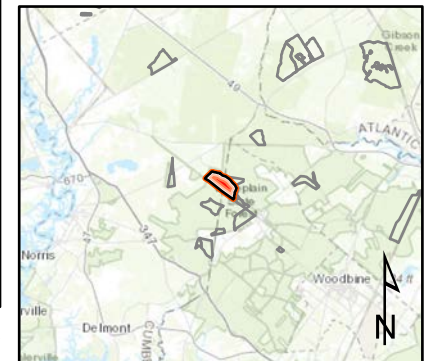
**Conditionally
Approved**

ONLM COMMENTS:
2018: Recommend low intensity RxB to minimize impacts to fire-sensitive wetlands in half the unit (i.e. cape may lowland/pitch pine-hardwood swamp, intermittent ponds); RxB for fuel reduction in pine plantation;

ENSP COMMENTS:
Herp concerns - Burn 11/15 through 3/15, with possible extension until 3/31 with an ecological justification

HPO COMMENTS:
no comment

SFS COMMENTS:
no comment



Proposed units Existing lines Wetlands

1,200 ft

MTC, NJFFS
20210106