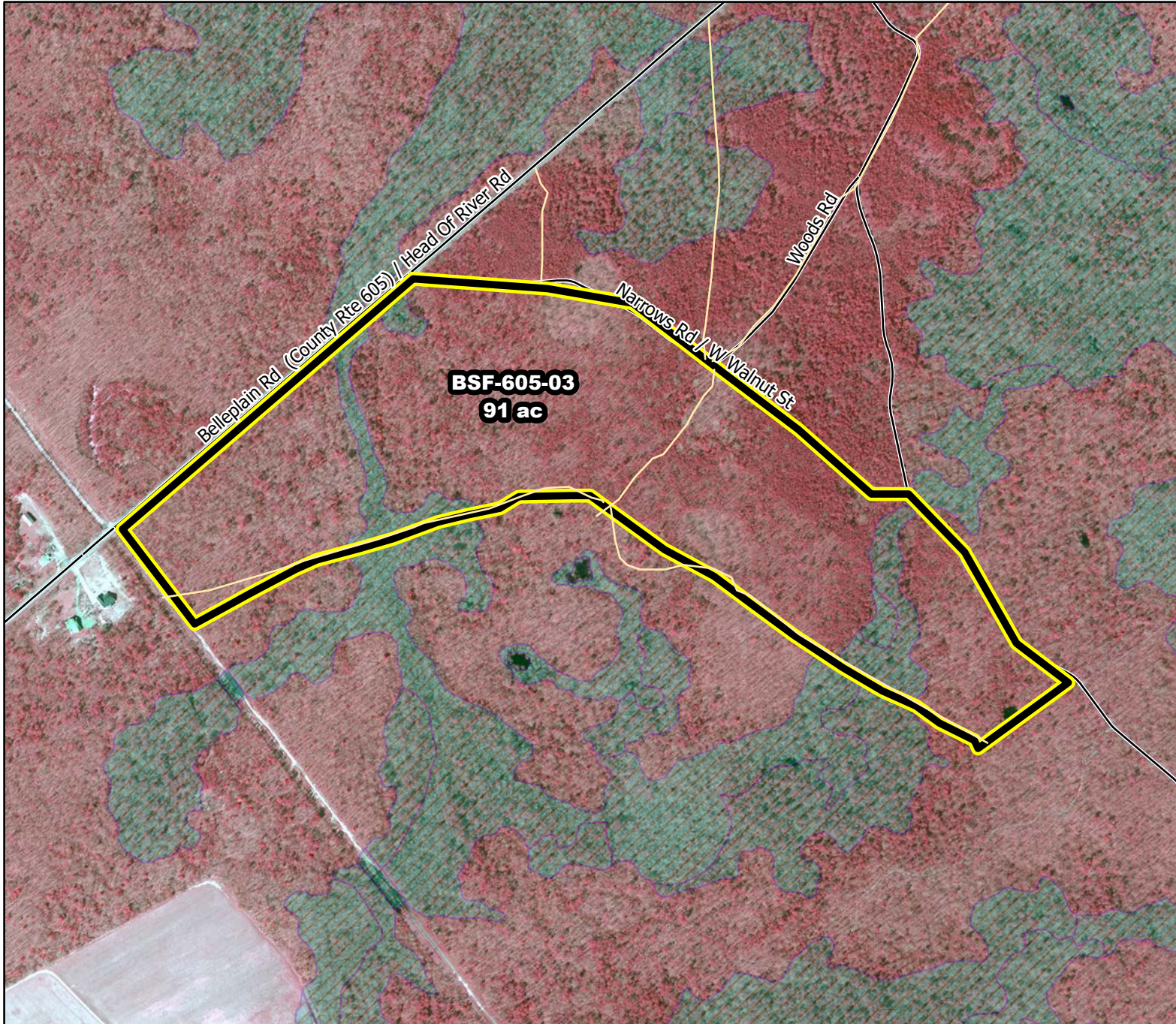




Prescribed Burning LMR Determinations

Last Approved Year:
2023



BSF-605-03

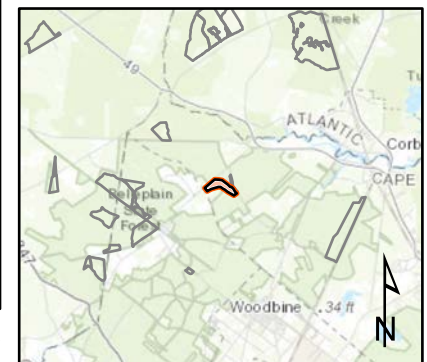
**Conditionally
Approved**

ONLM COMMENTS:
2018: Adjusted boundary which excludes most wetlands from original unit was approved in 2017 LMR

ENSP COMMENTS:
no comment

HPO COMMENTS:
no comment

SFS COMMENTS:
no comment



Proposed units Existing lines Wetlands

1,200 ft

MTC, NJFFS
2021.01.06