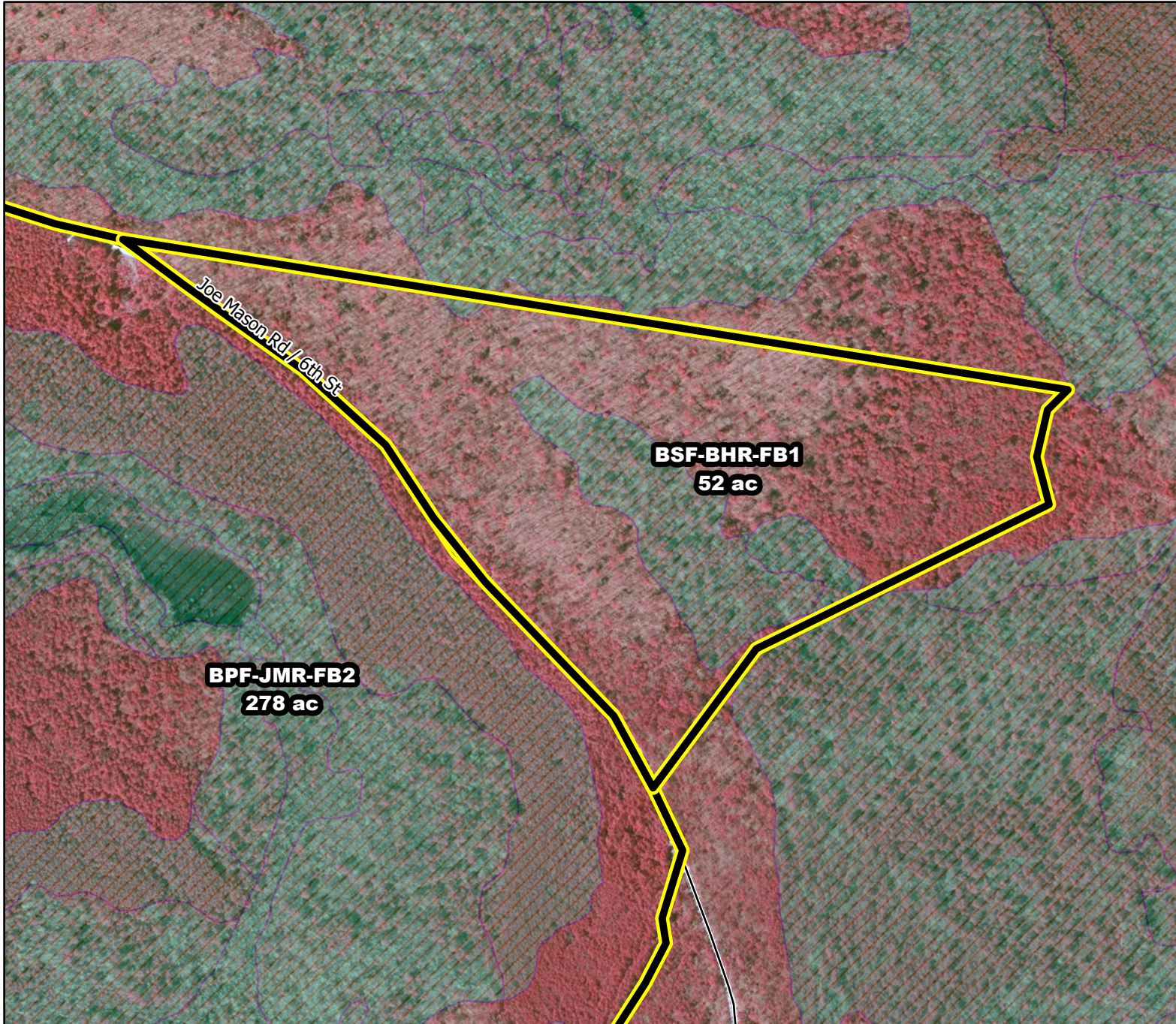




Prescribed Burning LMR Determinations

Last Approved Year:
2023



BSF-BHR-FB1

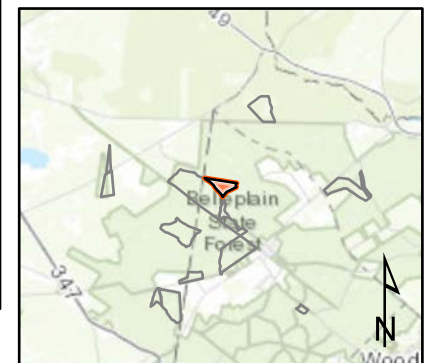
Approved

ONLM COMMENTS:
2018: Recommend low intensity RxB to minimize impacts to OP/PO in uplands, and fire-sensitive cape may lowland/pitch pine-hardwood swamp in wetlands; avoid plowlines crossing wetland; BHR-FB1-alt

ENSP COMMENTS:
Herp concerns - Burn 11/15 through 3/15, with possible extension until 3/31 with an ecological justification

HPO COMMENTS:
no comment

SFS COMMENTS:
no comment



Proposed units Wetlands

600 ft

MTC, NJFFS
2021.01.05