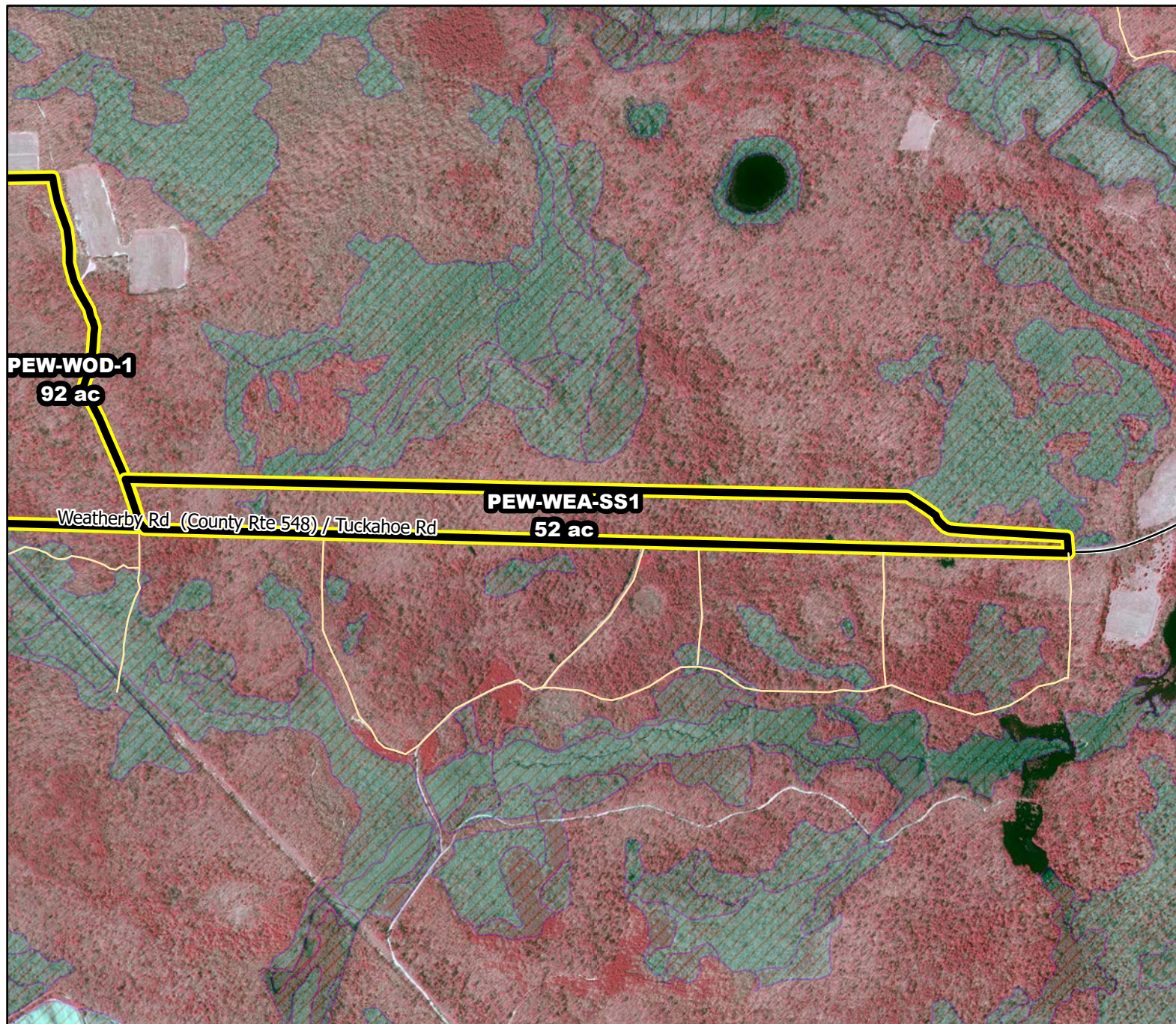




Prescribed Burning LMR Determinations

Last Approved Year:
2023



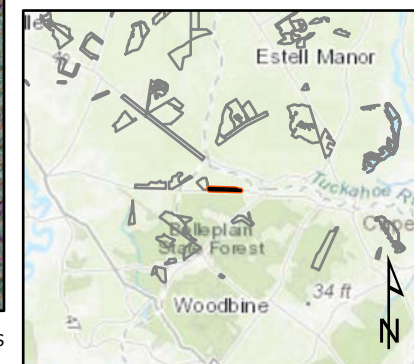
PEW-WEA-SS1

**Conditionally
Approved**

ONLM COMMENTS:
2018: Approve RxB and new
plowlines proposed

ENSP COMMENTS:
Avoid wetlands on west end,
Herp concerns - Burn 11/15
through 3/15, with possible
extension until 3/31 with an
ecological justification

HPO COMMENTS:
no comment
SFS COMMENTS:
no comment



Proposed units Existing lines Wetlands

1,200 ft

MTC, NJFFS
2021.01.06