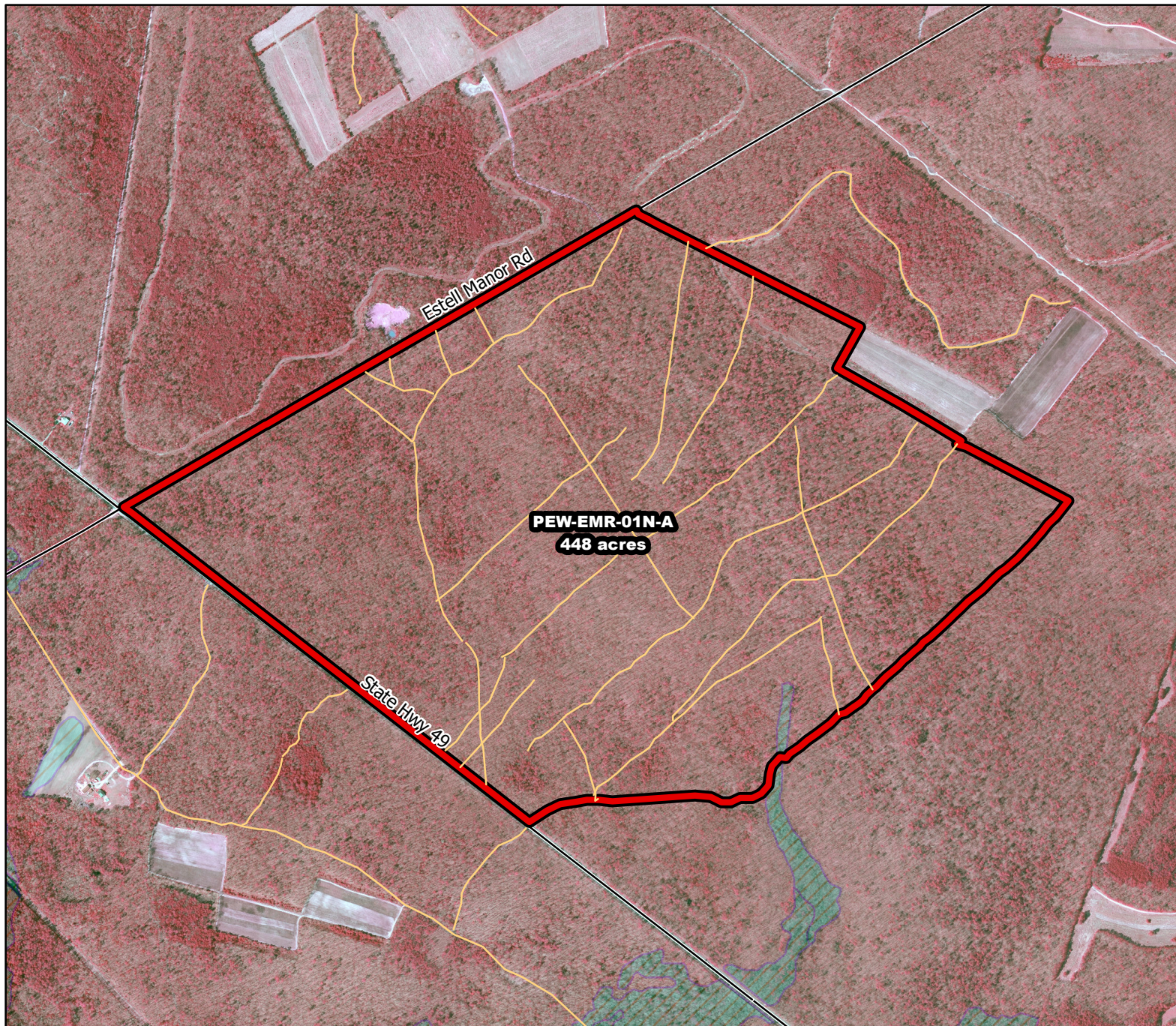




# 2019/2020 Season Prescribed Burning LMR Determinations - LMR ID 19-049



## **PEW-EMR-01N-A**

**Approved**

### **ONLM COMMENTS:**

Recommend low intensity RxB in oak-pine/pine-oak forest

### **HPO COMMENTS:**

no known resources present

### **SFS COMMENTS:**

no comment

### **ENSP COMMENTS:**

no comment



Proposed units



Existing lines



Wetlands

900 ft

MTC, NJFFS  
20191127