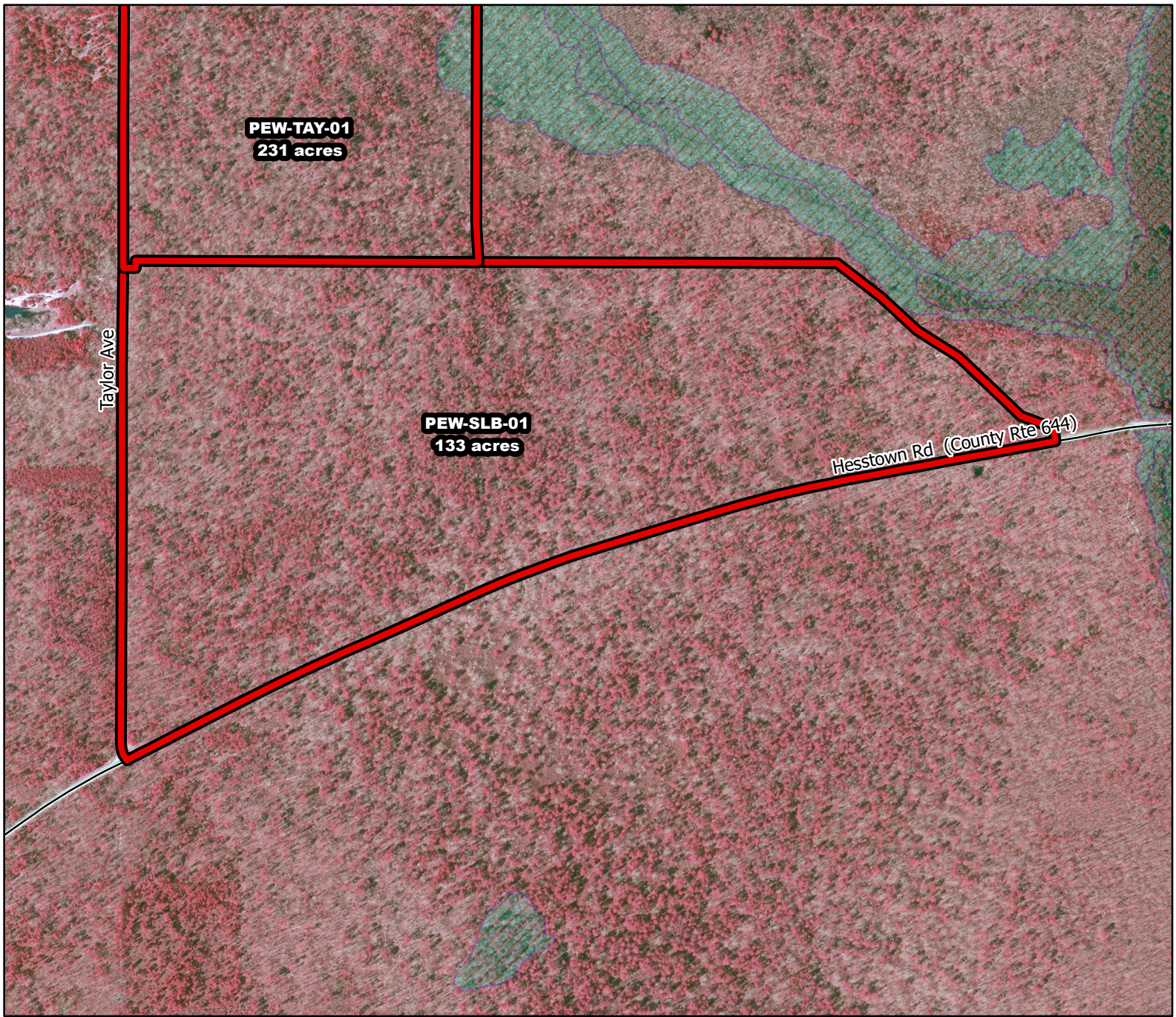




2019/2020 Season Prescribed Burning LMR Determinations - LMR ID 19-049



PEW-SLB-01

Approved

ONLM COMMENTS:

Recommend low intensity RxB in oak-pine/pine-oak forest

HPO COMMENTS:

some archaeological sensitivity near eastern limit near Tuckahoe River

SFS COMMENTS:

no comment

ENSP COMMENTS:

no comment



Proposed units Wetlands

600 ft

MTC, NJFFS
20191127