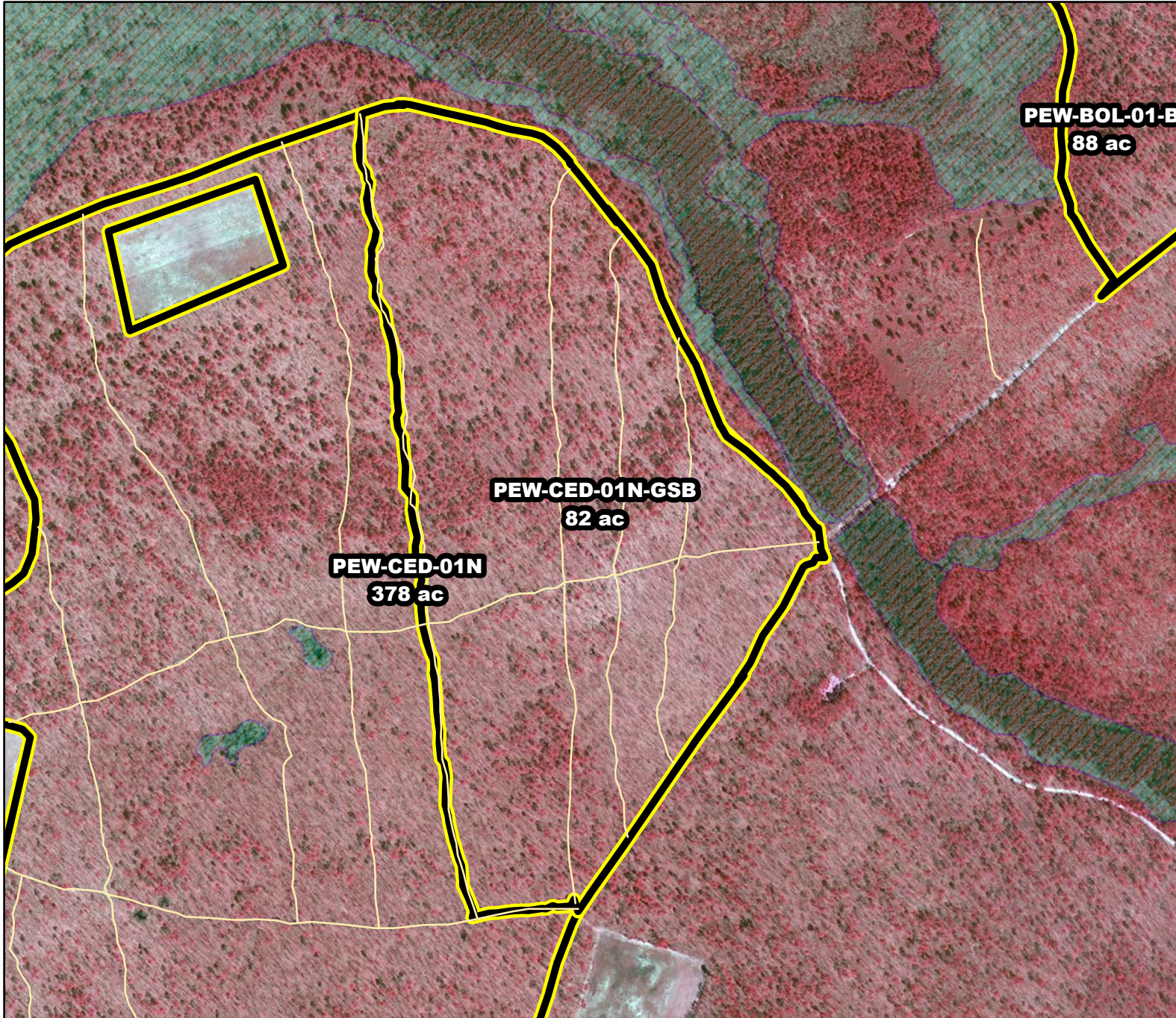




# Prescribed Burning LMR Determinations

Last Approved Year:  
**2023**



## **PEW-CED-01N-GSB**

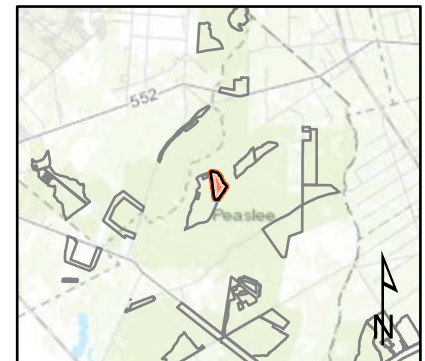
**Conditionally  
Approved**

**ONLM COMMENTS:**  
2019: Approved for test of growing season RxB, in open pine upland in north half of unit (per LULC), and OP in south half of unit with paleodune in part

**ENSP COMMENTS:**  
2019: Please advise DFW staff of burn schedule

**HPO COMMENTS:**  
no response

**SFS COMMENTS:**  
no comment



Proposed units Existing lines Wetlands

600 ft

MTC, NJFFS  
2021.01.06