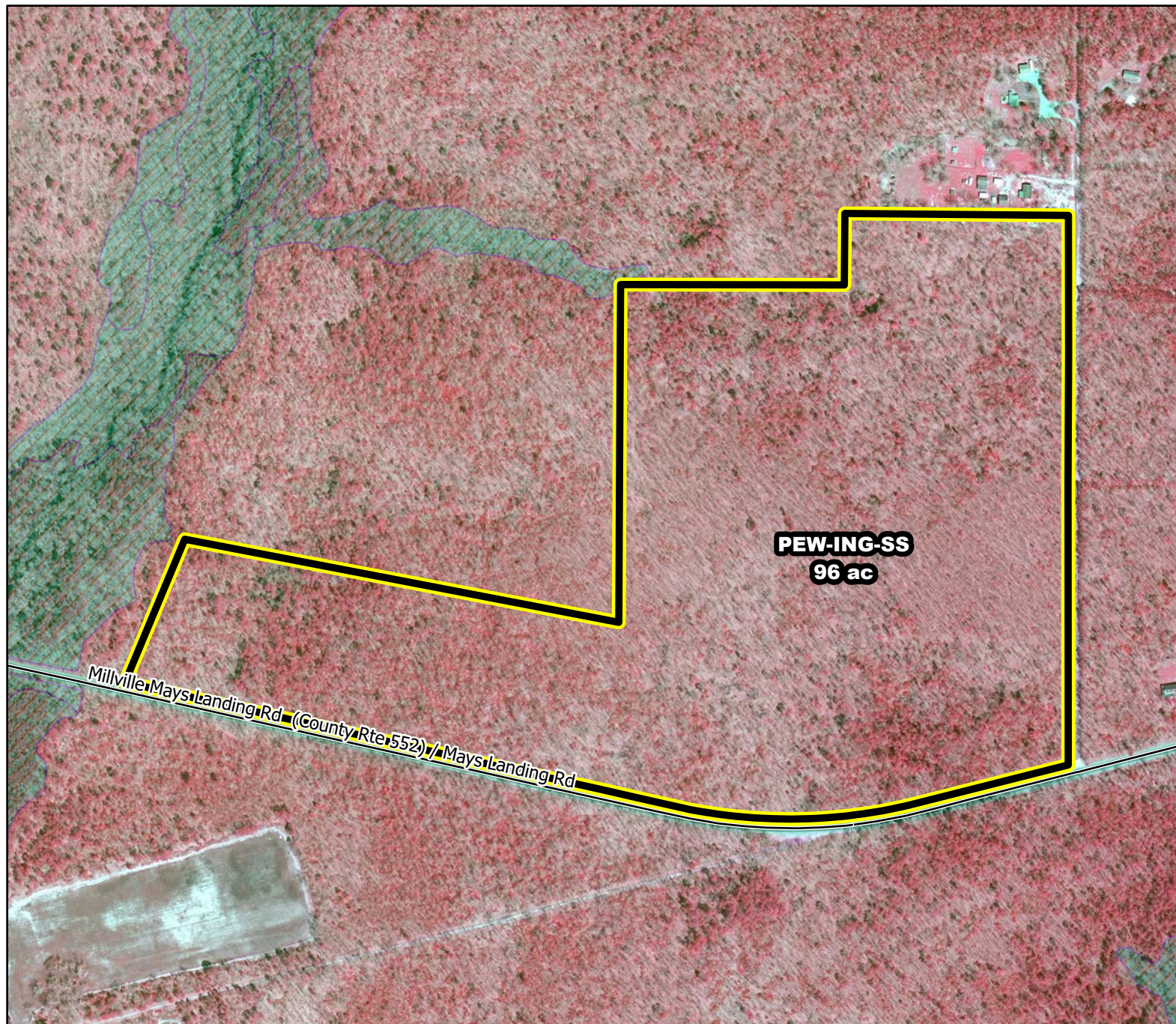




Prescribed Burning LMR Determinations

Last Approved Year:
2023



PEW-ING-SS

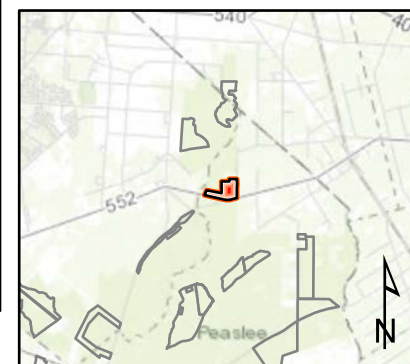
**Conditionally
Approved**

ONLM COMMENTS:
2019: Recommend low intensity RxB in oak-pine/ pine-oak forests found in most of unit

ENSP COMMENTS:
no comment

HPO COMMENTS:
no response

SFS COMMENTS:
no comment



Proposed units Wetlands

600 ft

MTC, NJFFS
2021.01.06