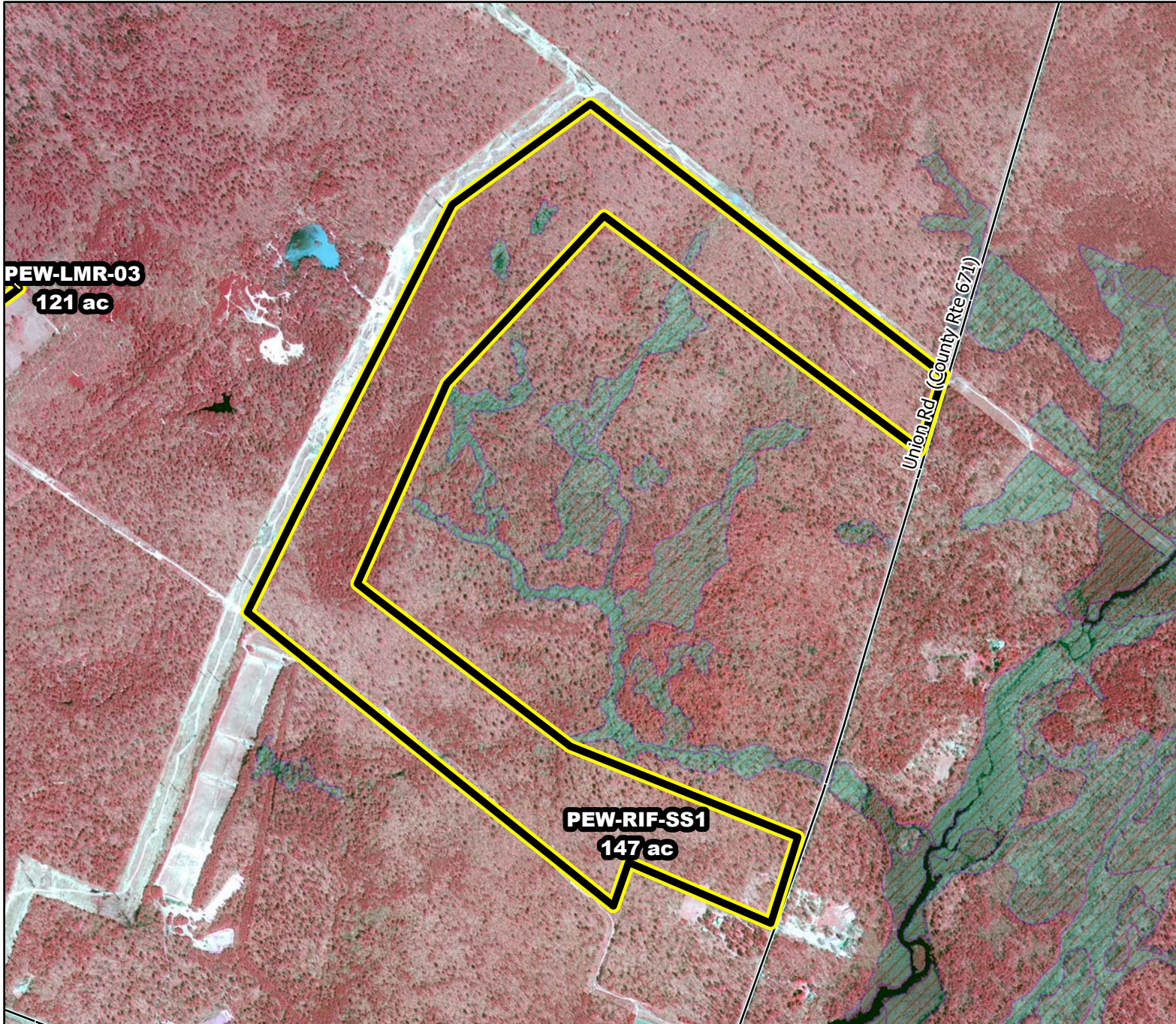




Prescribed Burning LMR Determinations

Last Approved Year:
2023



PEW-RIF-SS1

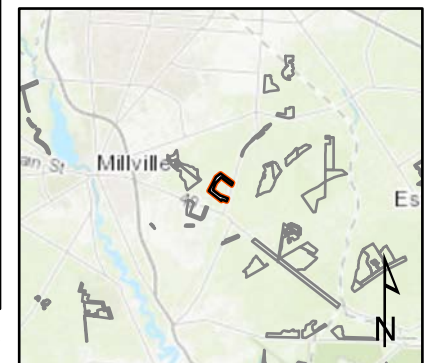
**Conditionally
Approved**

ONLM COMMENTS:
2018: Approve RxB and new
plowlines proposed

ENSP COMMENTS:
Burn 11/15-3/15 , Create
Plowlines 5/15/-9/10 (Herp
Concerns) with possible
extension until 3/31 with an
ecological justification

HPO COMMENTS:
no comment

SFS COMMENTS:
no comment



Proposed units Existing lines Wetlands

900 ft

MTC, NJFFS
20210106