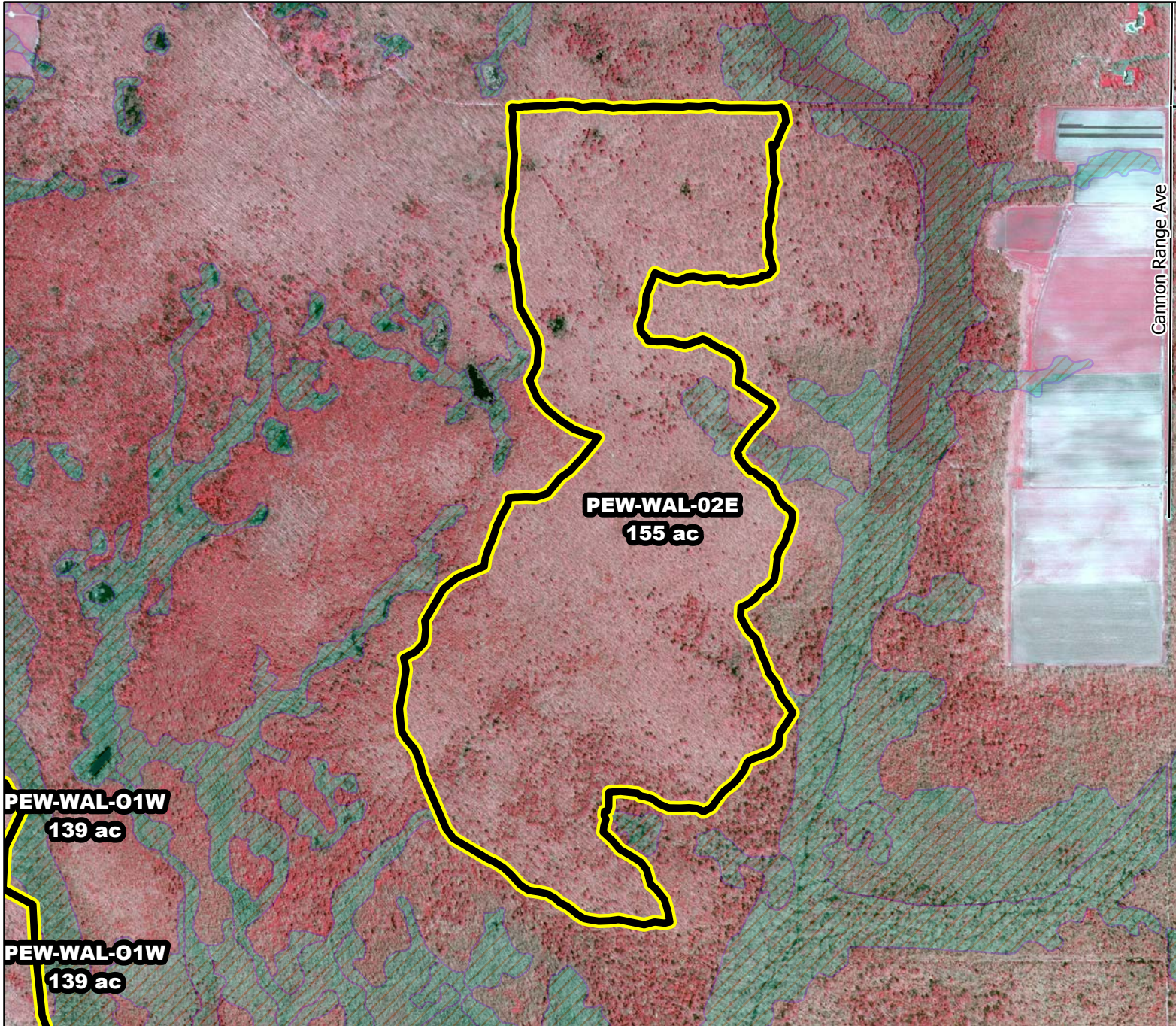




Prescribed Burning LMR Determinations

Last Approved Year:
2023



PEW-WAL-02E

**Conditionally
Approved**

ONLM COMMENTS:
2019: Resolved unit boundary discrepancy and excluded swamps and intermittent ponds, with unit boundary corresponding to existing firelines and containment features.

ENSP COMMENTS:
2019: Herp concerns - Burn as late as possible

HPO COMMENTS:
no response

SFS COMMENTS:
no comment



Proposed units Wetlands

900 ft

MTC, NJFFS
2021.01.06