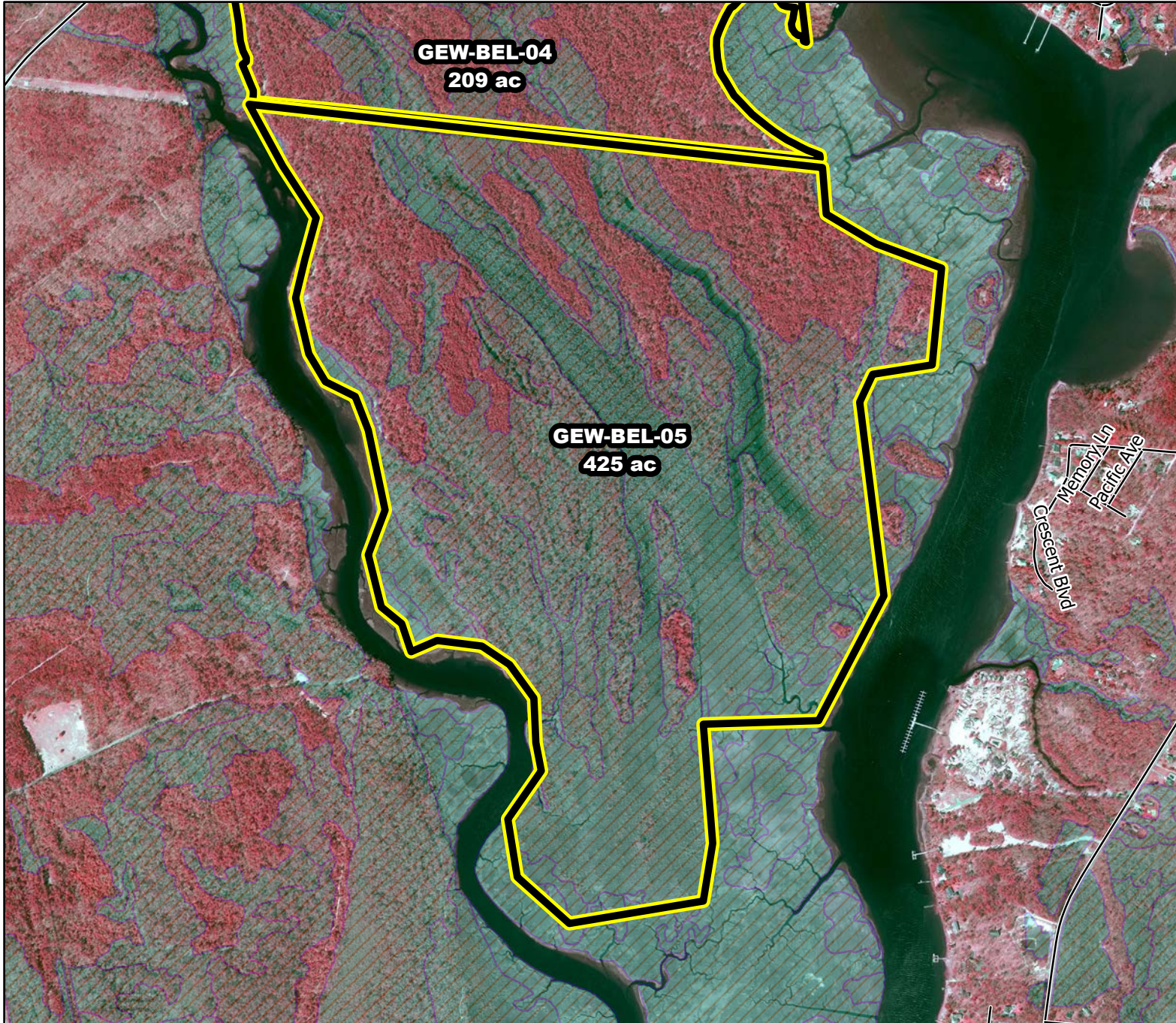




Prescribed Burning LMR Determinations

Last Approved Year:
2023



GEW-BEL-05

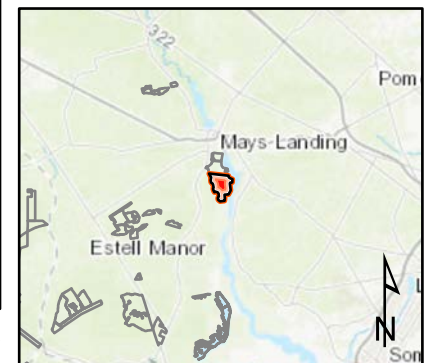
**Conditionally
Approved**

ONLM COMMENTS:
2018: Comments Document - for full conditions, Aerial ignitions using flanking fire. Following up on our discussion of previously denied unit GEW-BEL-05 with extensive wetlands in the center and southern half of the unit

ENSP COMMENTS:
no comment

HPO COMMENTS:
The entire non-marsh landform is very sensitive for archaeological sites and known sites are in close proximity. Archaeological monitoring would be recommended for any new plow lines

SFS COMMENTS:
Other LMR constraints are met



Proposed units Wetlands

1,200 ft

MTC, NJFFS
20210106