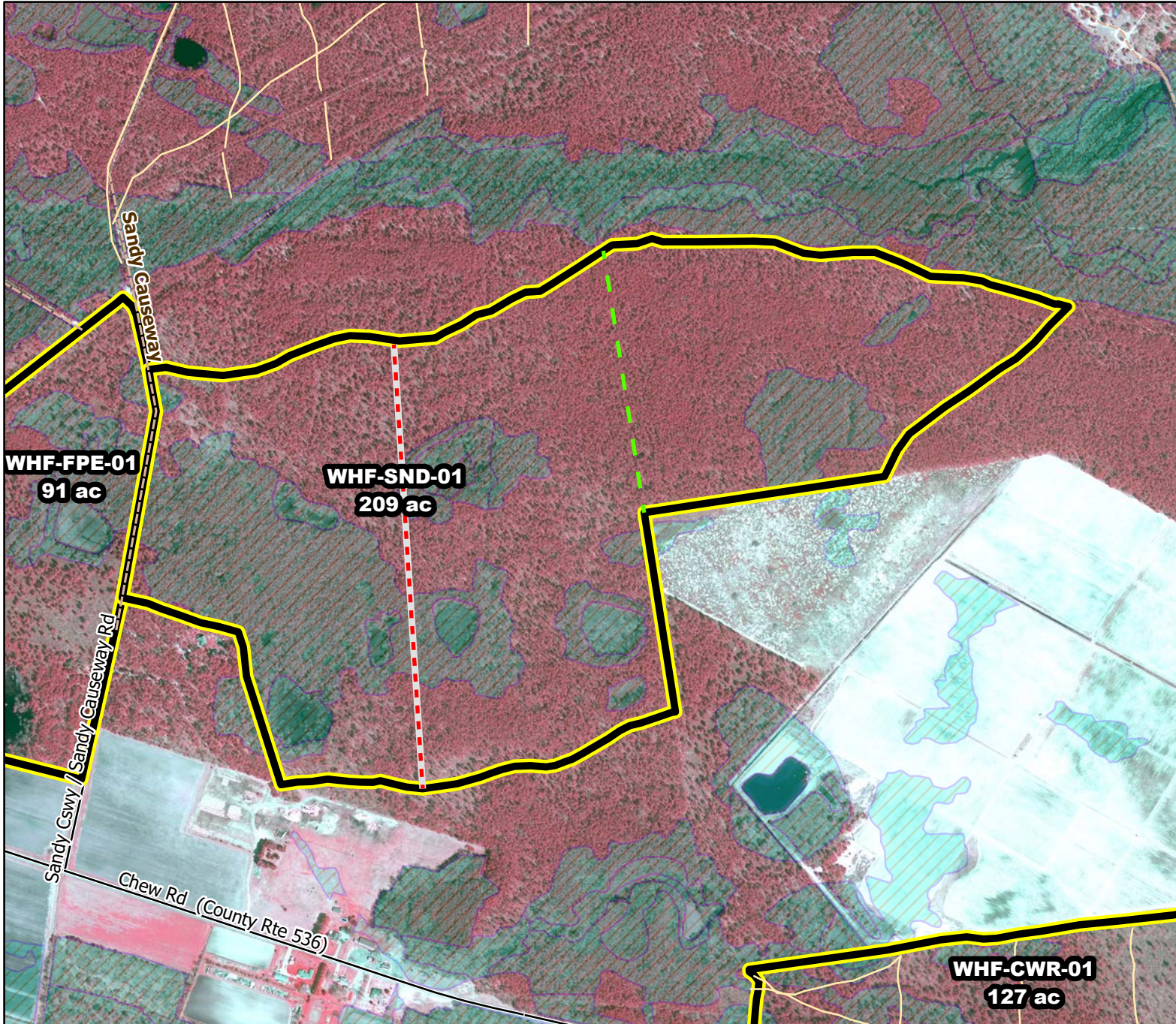




# 2020/2021 Season Prescribed Burning LMR Determinations - LMR ID 20-072



## WHF-SND-01

**Conditionally Approved**

### **ONLM COMMENTS:**

No plowlines near intermittent ponds, in wetlands or on paleodunes; RxB when ponds are water-filled; Use mod-mixed intensity RxB in pine-shrub oak and pine lowlands.

### **ENSP COMMENTS:**

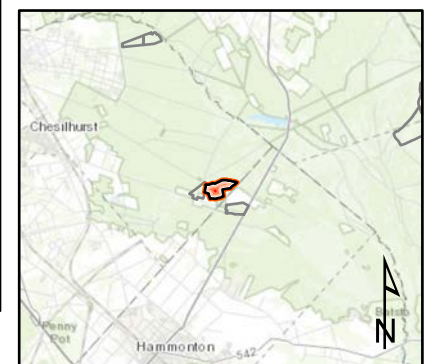
no comment

### **HPO COMMENTS:**

no response

### **SFS COMMENTS:**

no comment



Proposed units



Approved NEW lines



Denied NEW lines



Existing lines

900 ft

MTC, NJFFS  
20201222