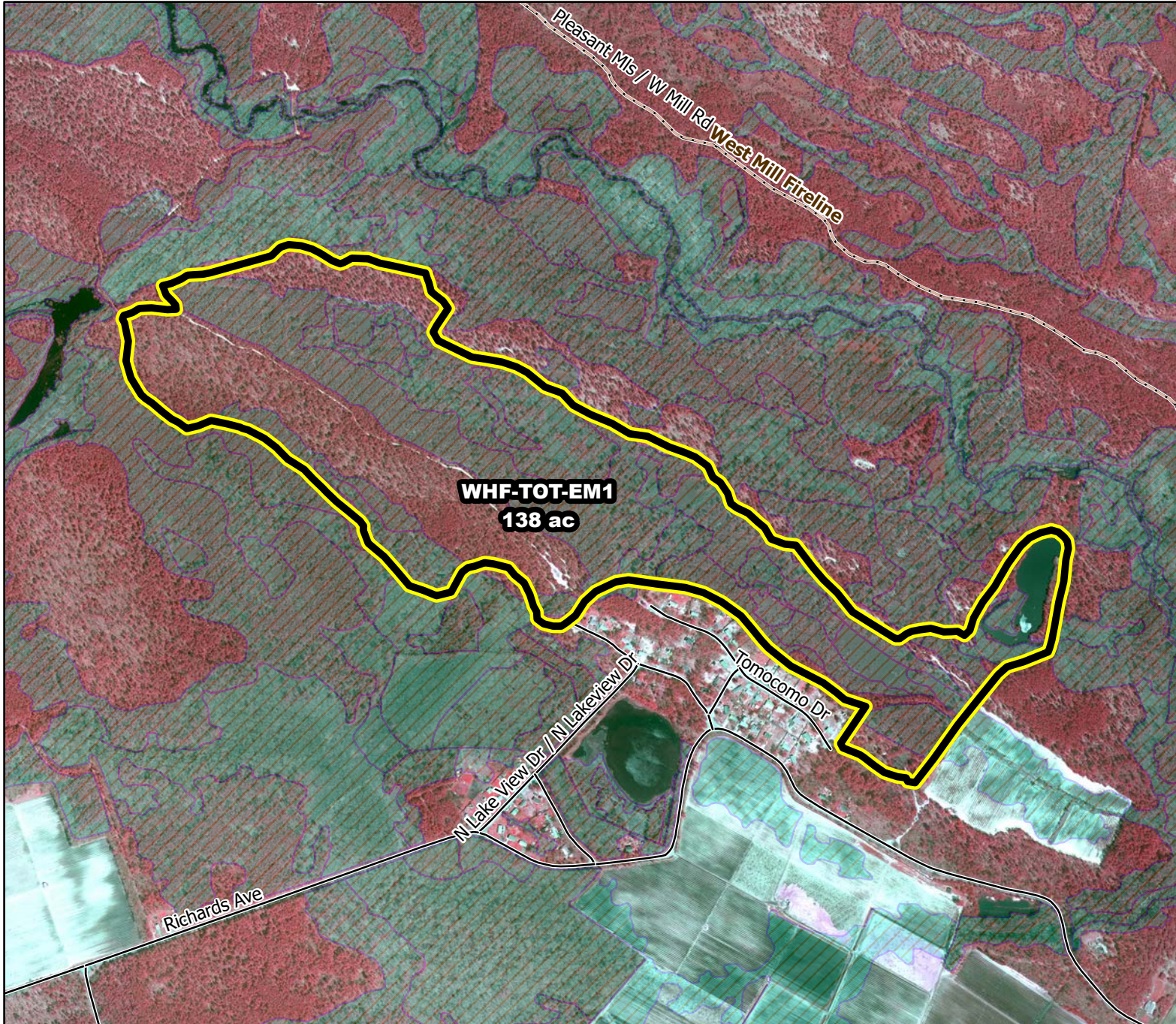




Prescribed Burning LMR Determinations

Last Approved Year:
2023



WHF-TOT-EM1

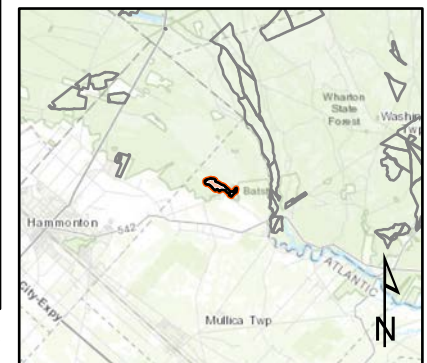
**Conditionally
Approved**

ONLM COMMENTS:
2018: Paleodunes & wetlands (PA, Eps;) common, so avoid plowlines

ENSP COMMENTS:
Herp concerns - Burn 11/15 through 3/15, with possible extension until 3/31 with an ecological justification

HPO COMMENTS:
no comment

SFS COMMENTS:
Other LMR constraints are met



Proposed units Woods Roads Wetlands

1,200 ft

MTC, NJFFS
2021.01.06