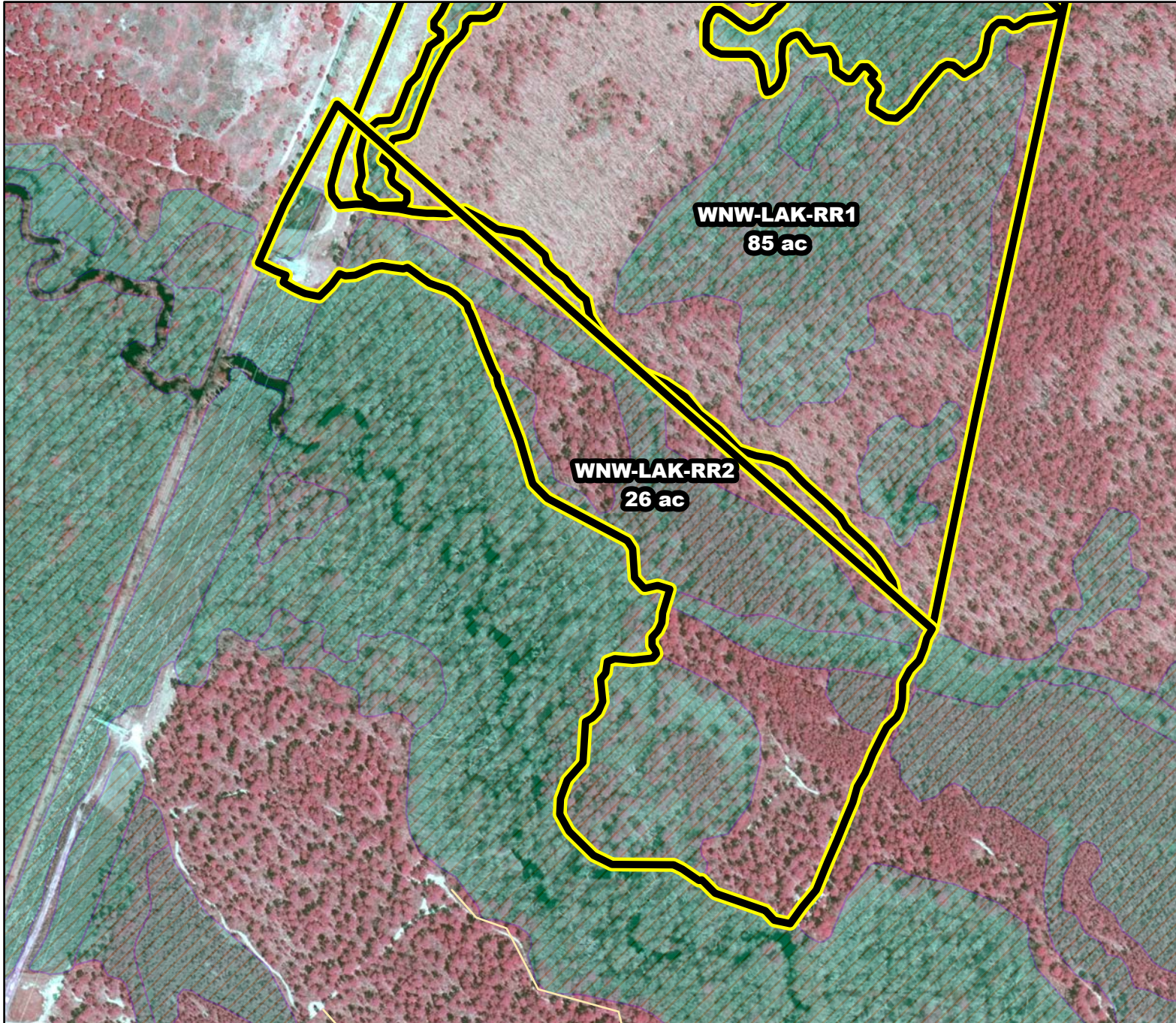




Prescribed Burning LMR Determinations

Last Approved Year:
2023



WNW-LAK-RR2

**Conditionally
Approved**

ONLM COMMENTS:
2019: Resolved, polygon to exclude swamps along GEH River from RxB unit; RxB OK in uplands and pine lowlands

ENSP COMMENTS:
no comment

HPO COMMENTS:
no response

SFS COMMENTS:
no comment



Proposed units Existing lines Wetlands

300 ft

MTC, NJFFS
2021.01.06