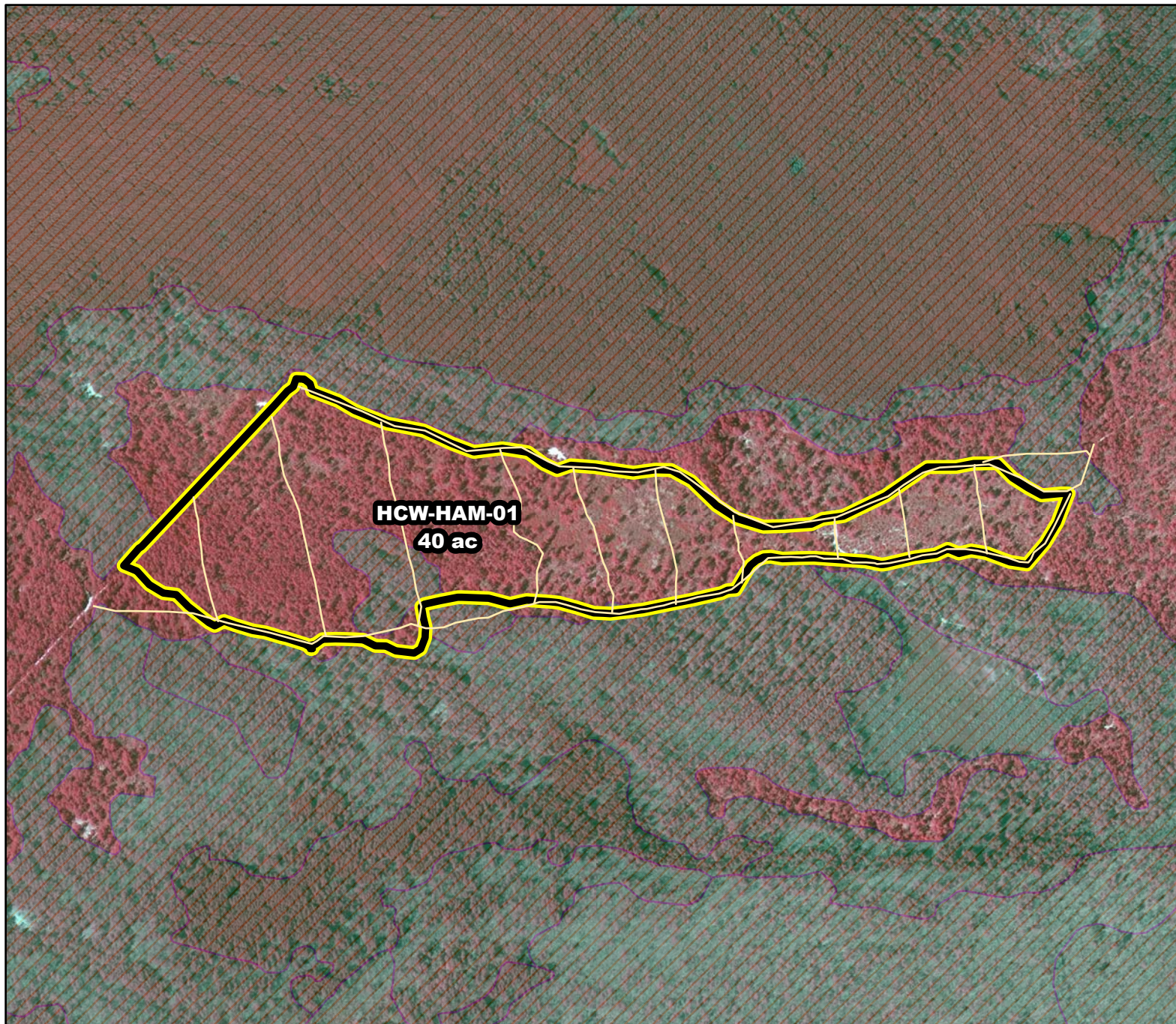




Prescribed Burning LMR Determinations

Last Approved Year:
2023



Proposed units Existing lines Wetlands

600 ft

MTC, NJFFS
2021.01.06

HCW-HAM-01

**Conditionally
Approved**

ONLM COMMENTS:
2018: Recommend mixed intensity RxB to maintain/ restore open canopy pine-shrub oak barrens and paleodune barrens

ENSP COMMENTS:
no comment

HPO COMMENTS:
no comment

SFS COMMENTS:
no comment

