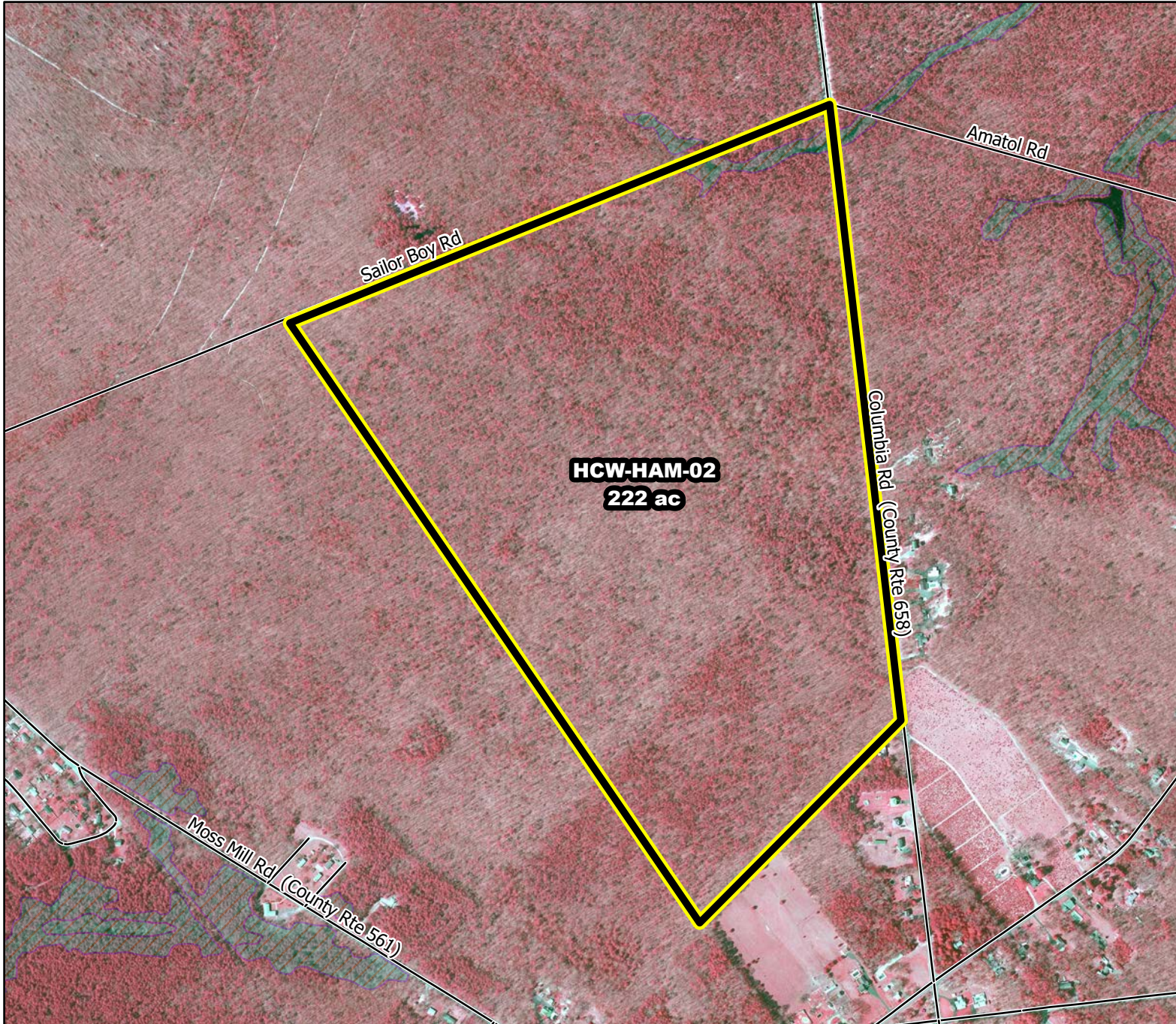




Prescribed Burning LMR Determinations

Last Approved Year:
2023



HCW-HAM-02

**Conditionally
Approved**

ONLM COMMENTS:
2018: Recommend low intensity Rxb to maintain oaks in OP/PO; Avoid plowlines in wetland swale in NE corner

ENSP COMMENTS:
no comment

HPO COMMENTS:
no comment

SFS COMMENTS:
no comment



Proposed units Wetlands

900 ft

MTC, NJFFS
20210106