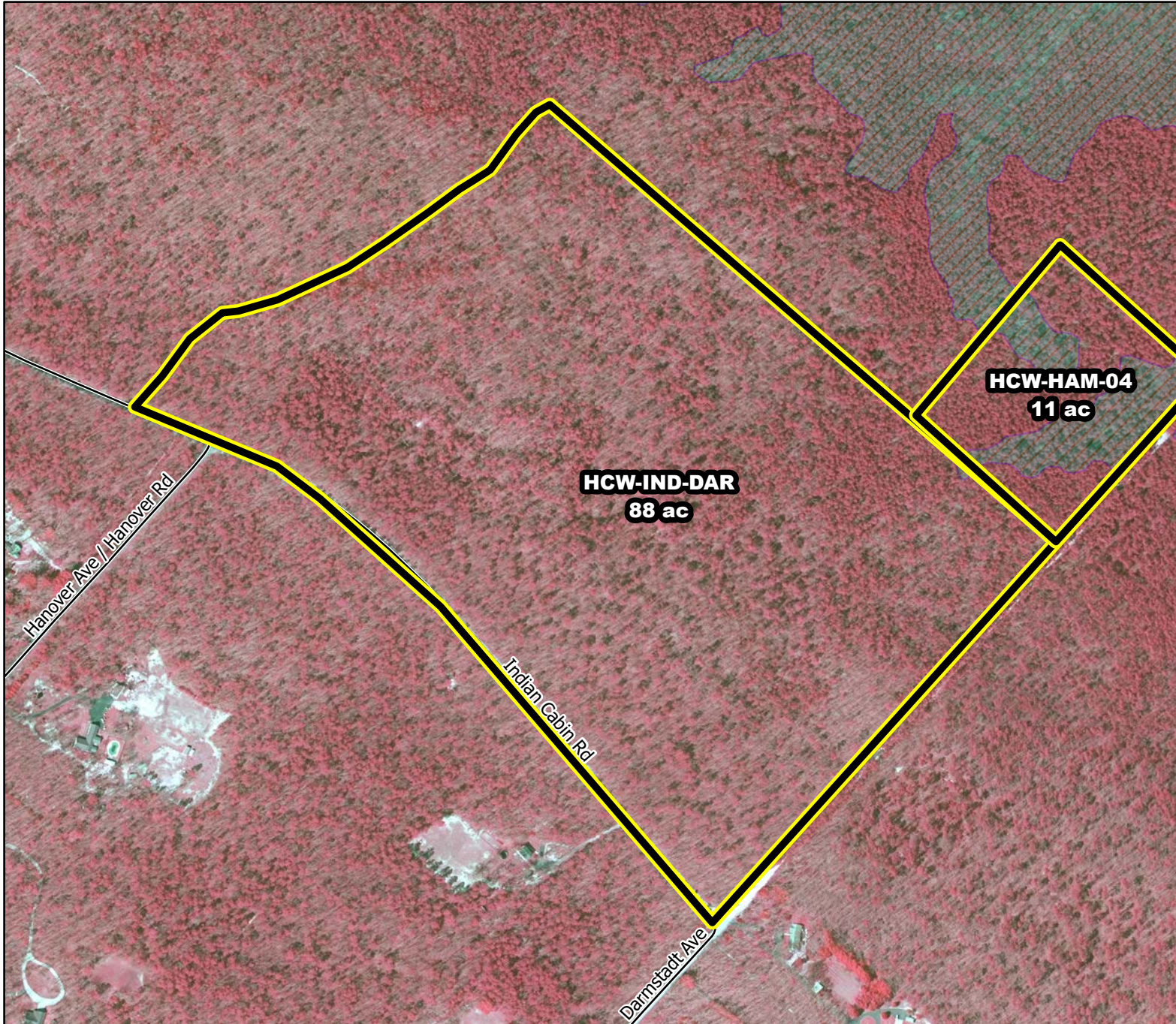




Prescribed Burning LMR Determinations

Last Approved Year:
2023



HCW-IND-DAR

**Conditionally
Approved**

ONLM COMMENTS:
2018: Resolved, Unit boundary was adjusted on NW edge to utilize an existing road; Paleodune geology in SW half of unit was mitigated from plowline impact by reducing the number of plowlines; recommend low

ENSP COMMENTS:
Herp concerns - Burn 11/15 through 3/15, with possible extension until 3/31 with an ecological justification

HPO COMMENTS:
no comment

SFS COMMENTS:
Other LMR constraints are met

Proposed units Wetlands

600 ft

MTC, NJFFS
2021.01.06

