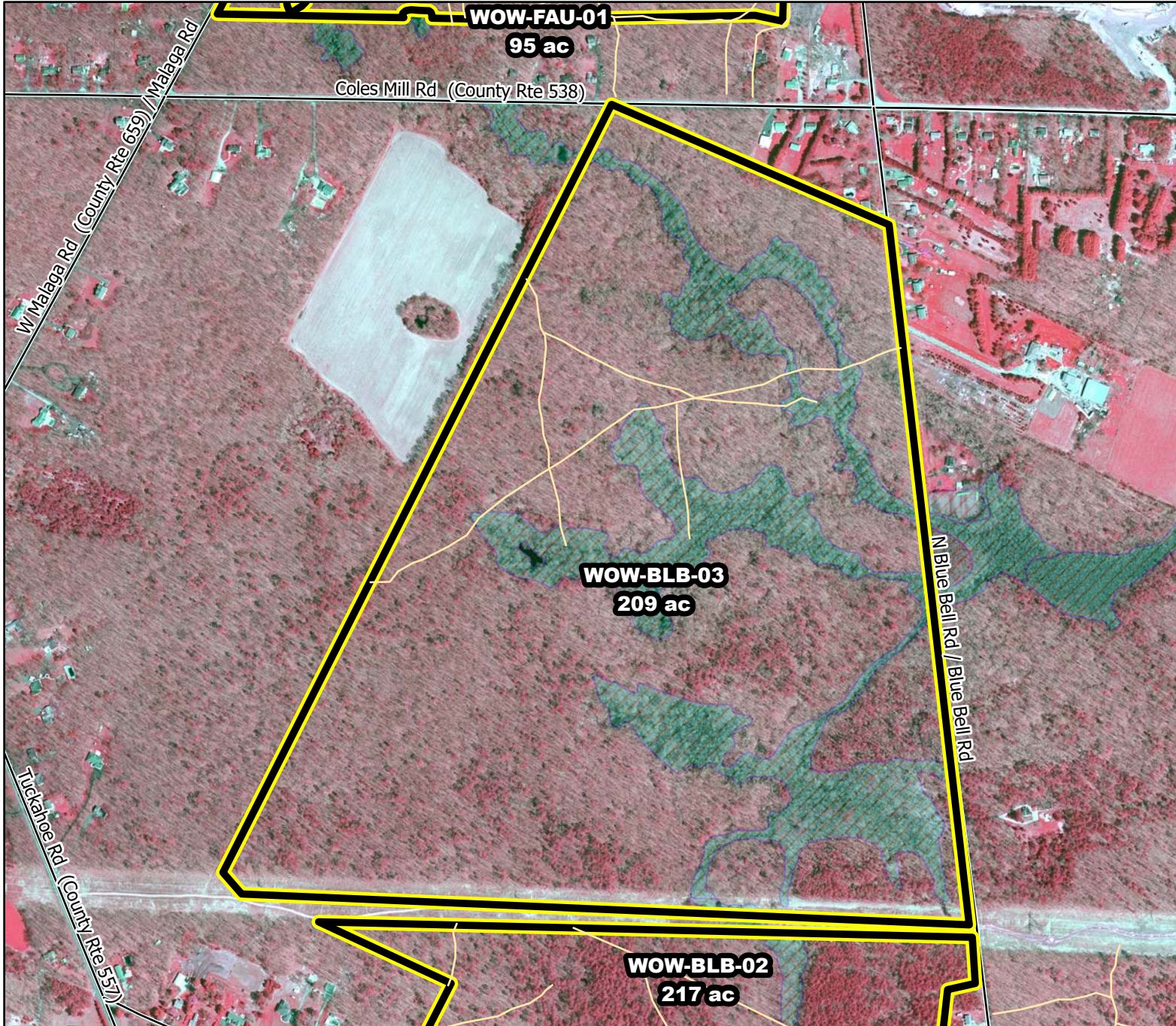




Prescribed Burning LMR Determinations

Last Approved Year:
2023



WOW-BLB-03

**Conditionally
Approved**

ONLM COMMENTS:
2018: Avoid plowing into turf in parts of fireline where narrow swamps are crossed, or relocate firelines to avoid wetlands; Recommend low intensity RxB to maintain tree oaks in OP/PO

ENSP COMMENTS:
no comment

HPO COMMENTS:
no comment

SFS COMMENTS:
no comment

Proposed units Existing lines Wetlands

600 ft

MTC, NJFFS
2021.01.06

