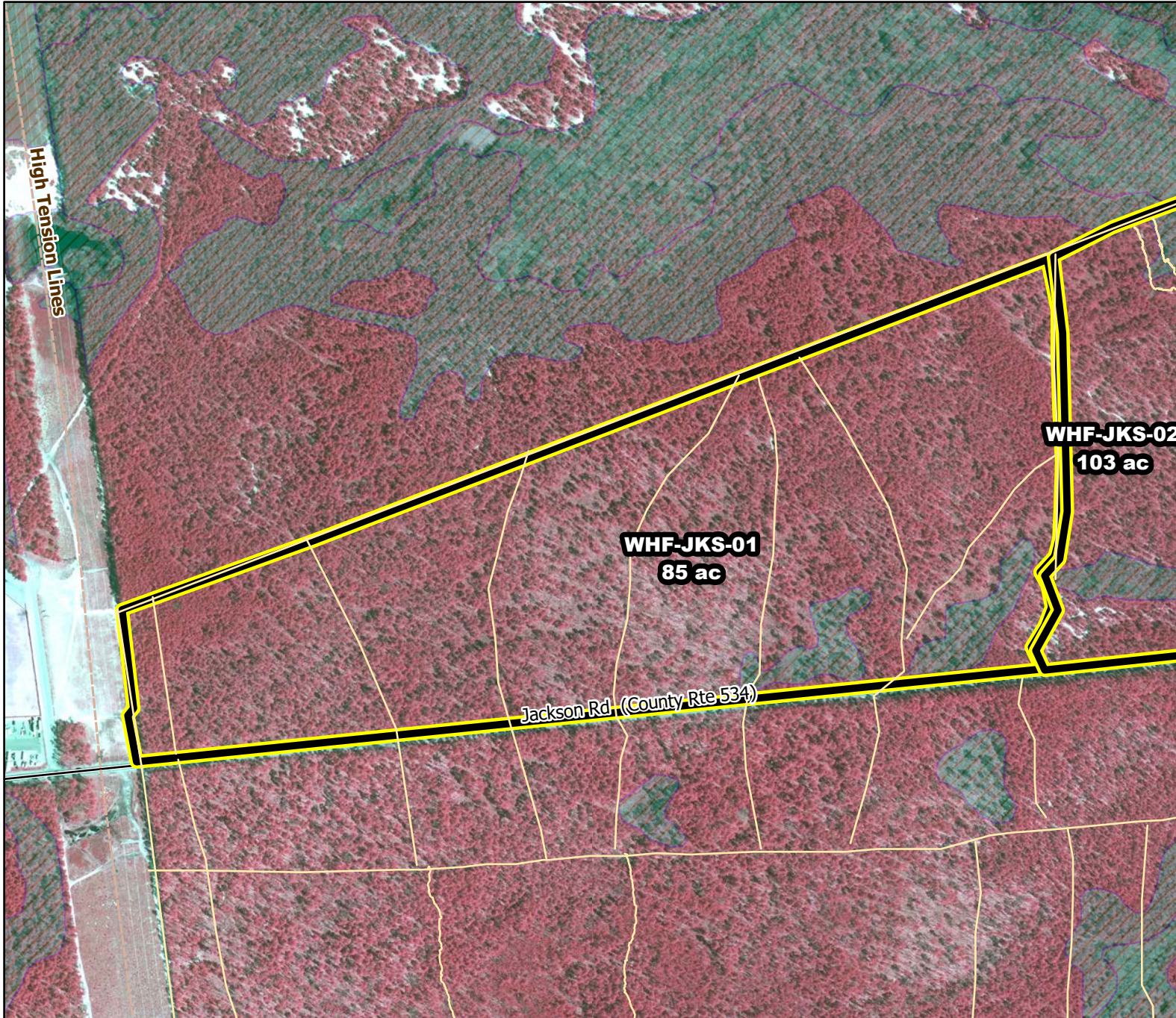




2020/2021 Season Prescribed Burning LMR Determinations - LMR ID 20-072



WHF-JKS-01

Approved

ONLM COMMENTS:

Recommend mixed-mod intensity RxB in unit with pine-shrub oak barrens & pine-oak-shrub oak woodlands

ENSP COMMENTS:

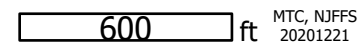
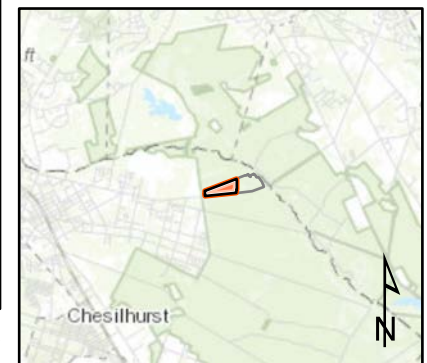
no comment

HPO COMMENTS:

no response

SFS COMMENTS:

no comment



MTC, NJFFS
20201221