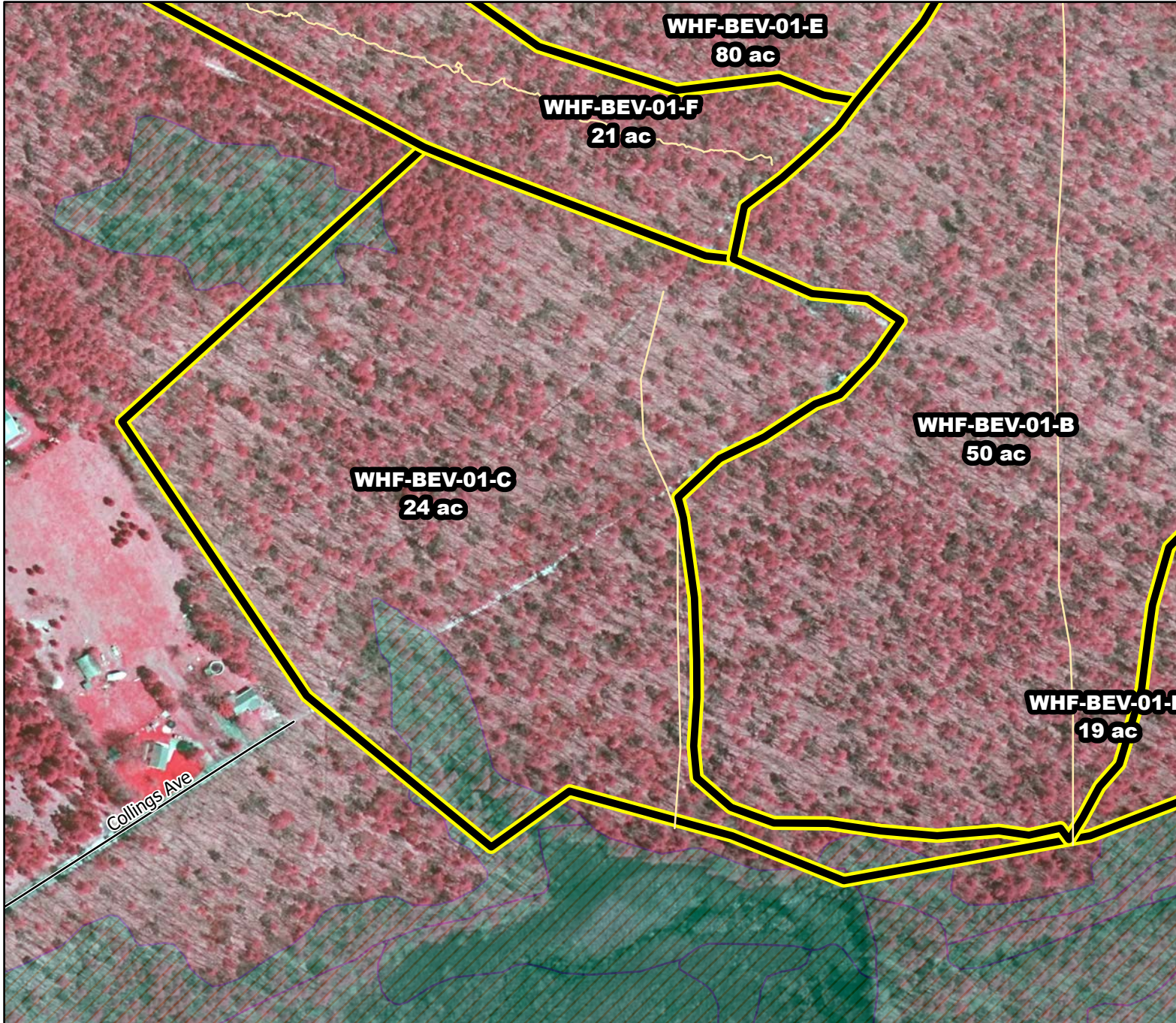




Prescribed Burning LMR Determinations

Last Approved Year:
2023



WHF-BEV-01-C

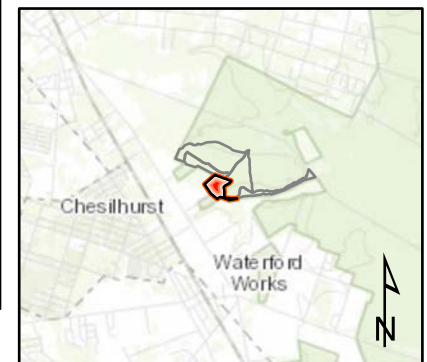
Approved

ONLM COMMENTS:
2018: Recommend low intensity RxB to maintain tree oaks in OP/PO

ENSP COMMENTS:
no comment

HPO COMMENTS:
no comment

SFS COMMENTS:
no comment



 Proposed units
  Existing lines
  Wetlands

300 ft

MTC, NJFFS
2021.01.05