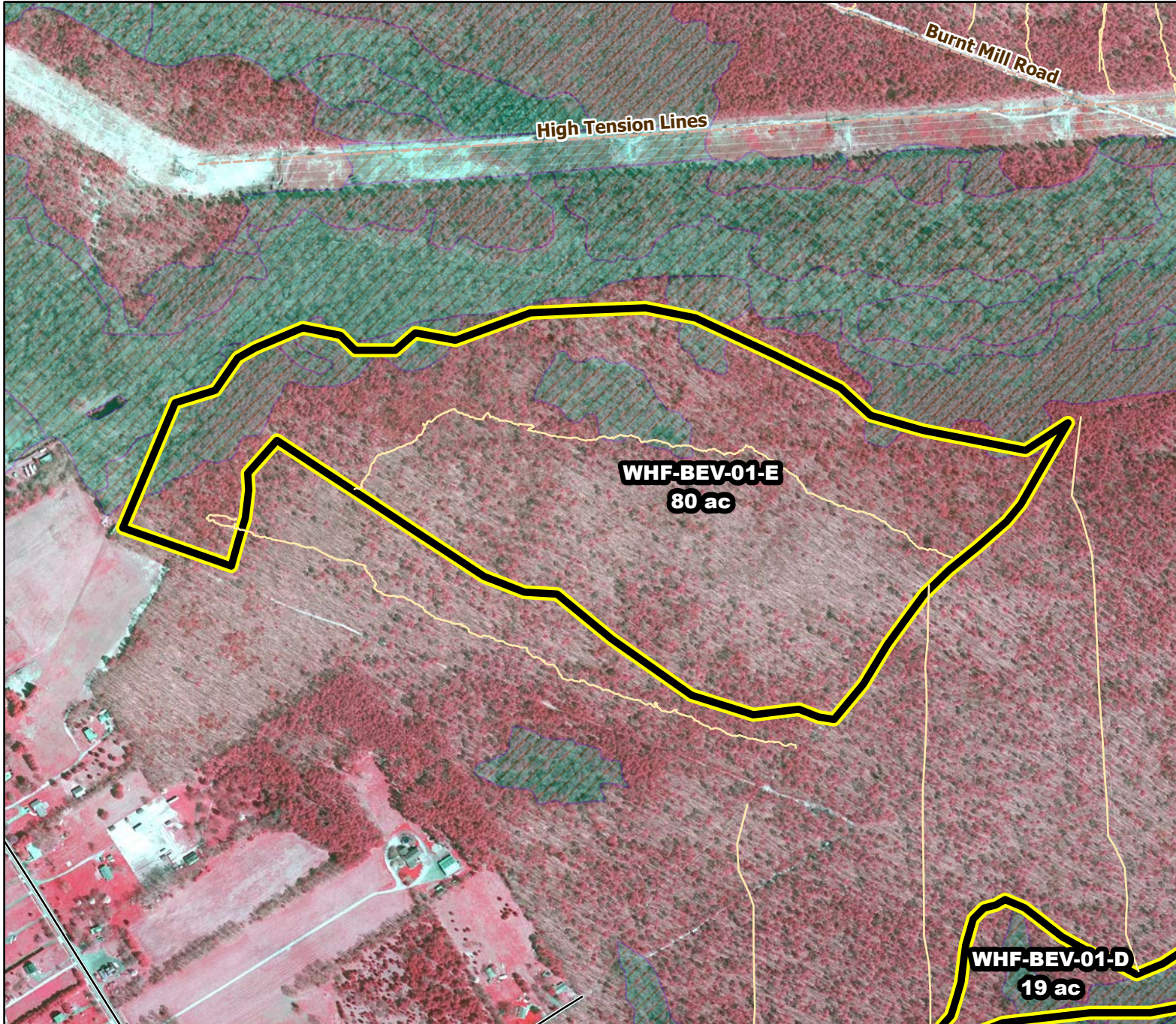




Prescribed Burning LMR Determinations

Last Approved Year:
2023



WHF-BEV-01-E

**Conditionally
Approved**

ONLM COMMENTS:
2018: Avoid plowline use within wetlands located along northwest and north part of unit; Low intensity RxB recommended in OP/PO; Recommend split unit, with mixed intensity burning in pine barrens/pine lowlands in E half of unit

ENSP COMMENTS:
no comment

HPO COMMENTS:
no comment

SFS COMMENTS:
no comment



Proposed units



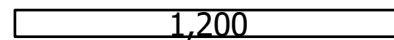
Existing lines



Woods Roads



Wetlands



MTC, NJFFS
2021.01.06