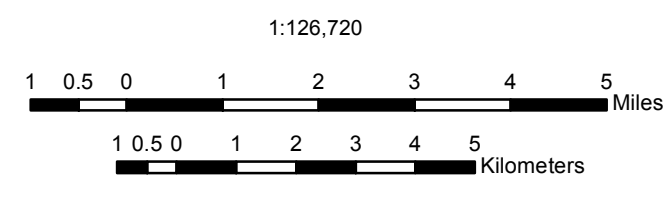


# Administrative Map 201506

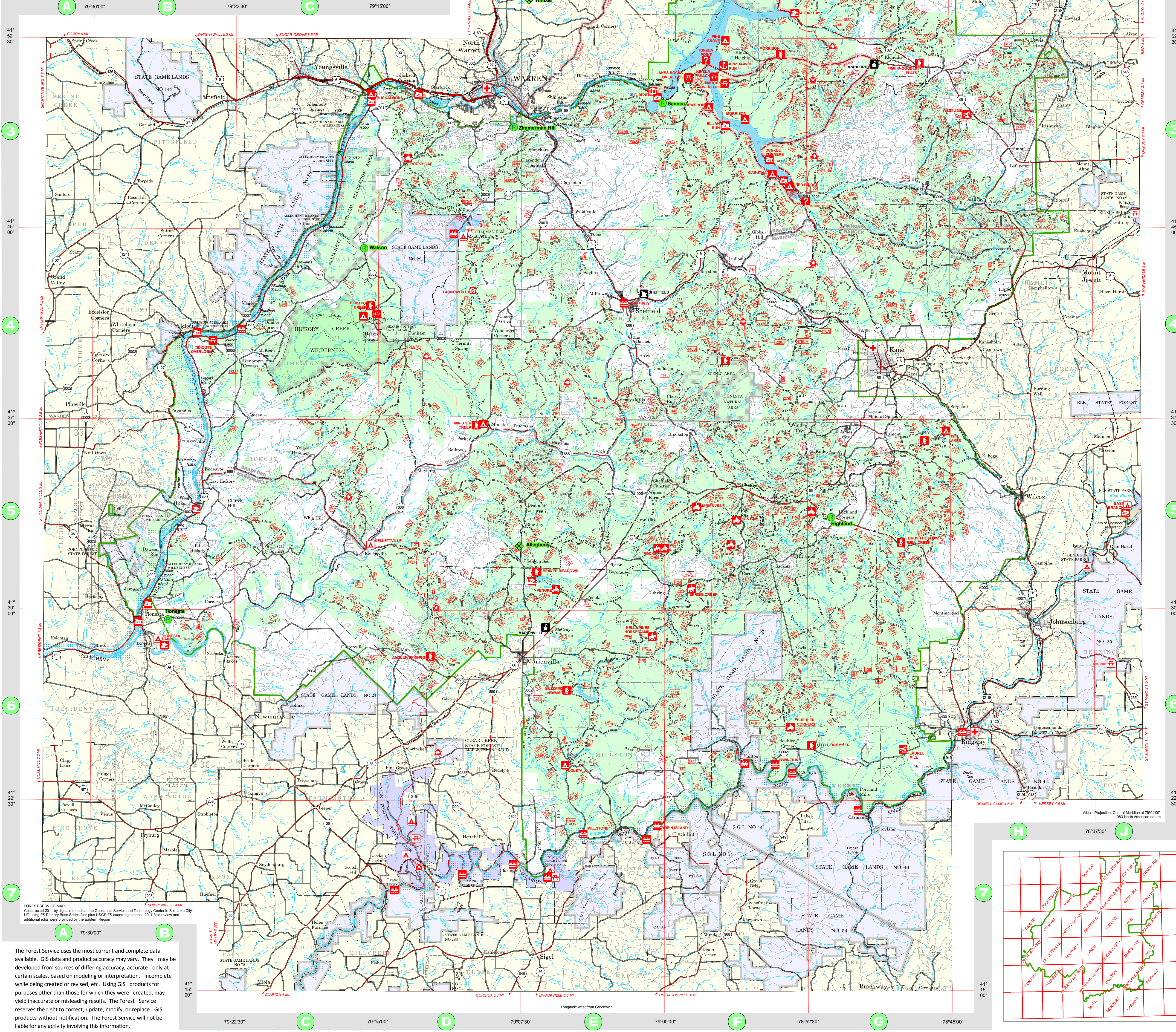
## ALLEGHENY NATIONAL FOREST PENNSYLVANIA



### LEGEND

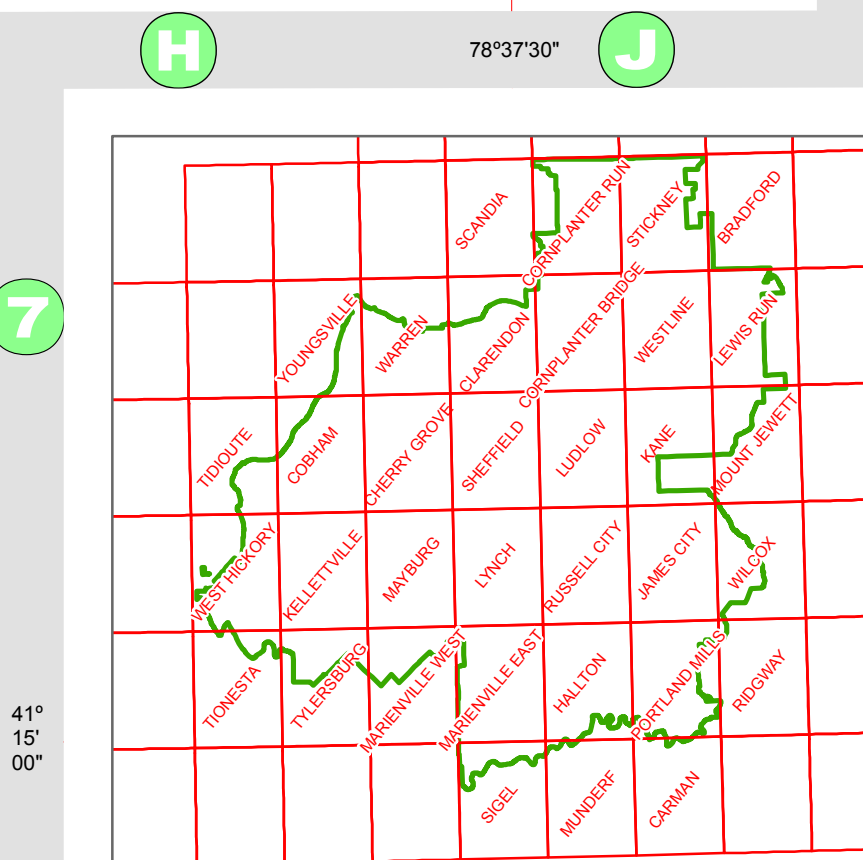
- National Forest Boundary
- Ranger District Boundary
- County Boundary
- National Special Area
- State Special Area
- National Scenic Byway
- Highway
- Highway, Secondary
- Light Duty Road
- Forest Service Road
- Unimproved Road
- Trail, National Scenic
- Trail, Hiking, National Recreation
- Trail, Motorized Use
- Trail, Location Approximate (Pathway)
- Decommissioned Trail
- Decommissioned Road
- Power Transmission Line
- Pipeline
- Township
- Railroad
- U.S.
- State
- National Forest Road
- Gate
- Weather Station
- Radio Repeater
- Allegheny National Forest
- Forest Wilderness
- Tribal Lands
- Other Federal Land
- State Park
- State Forest/State Game Lands
- Urban Area
- Wild and Scenic River
- New York
- Pennsylvania
- Forest Supervisor's Office
- Ranger District Office
- Other Forest Service Facility
- Campground, National Forest
- Campground, other than National Forest
- Picnic Area, National Forest
- Picnic Area, other than National Forest
- Visitor Center
- Information
- Hospital/Medical Center
- ATV Trail
- Motorcycle Trail
- Hiking Trail
- North Country National Scenic Trail
- Boat Ramp, Marina
- Canoe Launch
- Horseback Riding
- Cross-Country Skiing/Hiking
- Rental Cabin

Internal Use Only



FOREST SERVICE MAP  
Constructed 2011 by digital methods at the Geospatial Service and Technology Center in Salt Lake City, UT, using ES Primary Base Series files plus USGS 8.5 quadrangle maps. 2011 field review and additional edits were provided by the Eastern Region.

The Forest Service uses the most current and complete data available. GIS data and product accuracy may vary. They may be developed from sources of differing accuracy, accurate only at certain scales, based on modeling or interpretation, incomplete while being created or revised, etc. Using GIS products for purposes other than those for which they were created, may yield inaccurate or misleading results. The Forest Service reserves the right to correct, update, modify, or replace GIS products without notification. The Forest Service will not be liable for any activity involving this information.



Albers Projection, Central Meridian at 79°04'00", 1983 North American datum