

Morrell Complex

INCIDENT ACTION PLAN

Friday August 21, 2015

MT-LNF-000851
P1J1SX15 (0116)



Seeley Lake Ranger District
Lolo National Forest



Declination: 13° E
Datum: NAD83
Coordinate format: Degrees Decimal Minutes (DDM)

INCIDENT OBJECTIVES	1. Incident Name Morrell Complex	2. Date 8/21/2015	3. Time 1800
4. Operational Period 0700-2100			
5. General Control Objectives for the Incident (include alternatives) Provide for the protection of fire personnel and the public by using sound risk management and the mitigation of safety concerns. Provide for the protection of structures and other values at risk. Assure that relationships are maintained and enhanced with the appropriate agencies, local cooperators, private landowners and the public. Work closely with the Resource Advisors in the utilization of MIST tactics to minimize environmental impacts and the spread of noxious weed species as well as identification of culturally sensitive areas. Limit the spread of fire in the direction of Hwy 83 and the town of Seeley Lake by utilizing roads, natural barriers and Management Action Points wherever possible.			
6. Weather Forecast for Period . See spot forecast			
7. General Safety Message * Watch for falling snags. Keep a safe distance from heavy equipment. * Maintain keen situational awareness as fire behavior can change quickly with variations in fuels, weather and topography. * Maintain LCES - LOOKOUTS, COMMUNICATIONS, ESCAPE ROUTES, SAFETY ZONES * Take a minute to make a plan! Don't make a plan a minute! * Be prepared for "incidents within the incident", make and update contingency plans.			
8. Attachments (mark if attached)			
<input checked="" type="checkbox"/> Organization List - ICS 203 <input checked="" type="checkbox"/> Medical Plan - ICS 206 X (Other) Risk Assessment 215R <input checked="" type="checkbox"/> Div. Assignment Lists - ICS 204 <input checked="" type="checkbox"/> Incident Map X Safety Message <input checked="" type="checkbox"/> Communications Plan - ICS 205 <input type="checkbox"/> Traffic Plan X Spot Weather			
9. Prepared by (Planning Section Chief) Peter F. Fischer		10. Approved by (Incident Commander) Jim Grant 8/20/2015	

ORGANIZATION ASSIGNMENT LIST			
1. Incident Name Morrell Complex		Position	Name
		9. Operations Section	
2. Date August 20, 2015		Operation Chief	Steve Goldman Keith Murphy (t)
		Planning OPS	Terry Trapp Jay Saunders (t)
4. Operational Period 8/21/2015 0700 - 2100		a. Branch I – Division/Groups	
Position		Name	
		Deputy	
5. Incident Commander and Staff		Division November	Eric Rebitzke
IC	Jim Grant	Division Sierra	Maris Gabliks
Safety Officer	Butch Fitzpatrick Bob Hartlove (t)	Division	
Information Officer*	Catherine Koele Chad Mullman (t)	Staging Area Manager*	Rich Dentrux (t)
Liaison	Bill Paxton Bob Madill (t)		
IARR - EACC	Cogan (218) 820-6083	b. Air Operations Branch	
6. Agency Representatives		Air Operations Branch Director	
USFS	Rachel Feigley	Air Support Group Supervisor	
Resource Advisor	Scott Thomson Jeff Bogie	Helicopter Coordinator	
7. Planning Section		10. Finance Section	
Chief*	Peter Fischer	Chief*	
Deputy	Paul Olson	Deputy	
Resources Unit	Mary Lucas	Time Unit	Deb Niles
Situation Unit	Jeremy Fauskee	Procurement Unit	
Fire Behavior	Jeff Stampfly	Compensation/Claims Unit	
Demobilization Unit		Cost Unit	
GIS Specialist	BJ Glesener Scott Linn (t)	Personnel Time Recorder	Phillip Rodbell (t)
Status Check-in Recorder	Ken DelRossi (t)		
CTSP	Lori Gale/Kevin Watts		
Training Specialist	Matt Dillon		
8. Logistics Section			
Chief*	Jim Gray		
Deputy	Jerry Jussila		
Supply Unit	Bill Julson		
Facilities Unit	Ed Hean		
Ground Support Unit	Roy Stern		
Communications Unit			
Medical Unit	Bob White		
Ordering Manager	Jay Lauer	Prepared By (Resource Unit Leader)	
Ordering Manager	Chad Wilberger (t)	Paul Olson	

FIRE WEATHER FORECAST

FORECAST NO.: 4

NAME OF FIRE: **Morrell Complex**

PREDICTED FOR: **Day Shift**

UNIT: **MT-Lolo NF-Seeley Ranger District**

SHIFT DATE: **8/21/15 (Friday)**

TIME AND DATE

SIGNED: As per Spot Forecast

FORECAST ISSUED: **8/20/15 15:29**

Meteorologist

WEATHER DISCUSSION: ..

RED FLAG WARNING IN EFFECT FROM 11 AM TO 9 PM MDT FRIDAY.

Breezy conditions continued through last night as a weather system approaches the area. A front will push through the area Friday, bringing much cooler temperatures and a shift to northwest winds. In addition a few showers and thunderstorms are possible later Friday afternoon. The east side of the fire is expected to remain largely sheltered from the westerly winds. The only exception would be if northwest winds are able to funnel to north winds over the northern ridge and through that eastside drainage, in which case the eastside could see northerly breezes, though of a lesser magnitude than the west side wind. The chances of this increase as the day progresses and winds gain more of a northerly component.

WEATHER FORECAST

WEATHER: Partly cloudy in the morning. Chance of showers and thunderstorms in the afternoon, especially later in the afternoon. **Chance of wetting ran (>.10 inch)...30 percent.**

TEMPERATURES: 59-64 degrees after an overnight low of 48-53.

HUMIDITIES: 36-41 percent after a recovery of 55-60 percent overnight.

WINDS (20 ft): West 15-25 mph, becoming northwest in the afternoon. Gusts up to 35 mph in the afternoon. Local gusts to 45 are possible on the ridges.

MIXING HEIGHT: Around 500 ft. agl in the morning, increasing to 6000-7000 ft. agl in the afternoon.

MIXING WINDS: Northwest 30 mph. **LAL:** 3 **HAINES INDEX:** 3 very low

EXTENDED FORECAST via web:

Saturday - Partly cloudy. Slight chance of showers in the morning. Areas of smoke in the afternoon. Temp..70-80 valleys; 60-70 ridges. Min RH.15-25% valleys & 22-32% ridges. 20-Ft. Winds low elevation - becoming upslope/upvalley 4-8 mph in the afternoon.

Ridge Top...North up to 5 mph becoming west in the afternoon.

Haines Index..2 very low. LAL..1. CWR (> 0.10 Inch)...0 percent.

Sunday...Clear. Areas of smoke. Lows 40-50. Highs 80-90. South winds 5-10 mph.

Monday...Mostly clear. Areas of smoke. Lows 50-60. Highs 85-95.SW winds 5-10 mph.

FIRE BEHAVIOR FORECAST

FORECAST NO.: 4	TYPE OF FIRE: Wildfire
FIRE NAME: Morrell Complex	OPERATION PERIOD: Day Shift
DATE/TIME ISSUED: 8/20/15 1800	SIGNED: _____
UNIT: MT – Lolo NF – Seeley Ranger District	Fire Behavior Analyst: Jeff Stampfly

WEATHER FORECAST:

RED FLAG WARNING IN EFFECT FOR FRIDAY FROM 11:00 AM TO 9:00 PM MDT FRIDAY.

There are several watch out situations in the weather and fire behavior forecast today. With a frontal passage later in the day expect strong and gusty winds, a change in wind direction and there's a 30% chance of wetting rain. This also means there's a 70% chance it won't rain. Assumptions today are no wetting rain falls.

FIRE BEHAVIOR

GENERAL:

Winds were expected to stay up overnight. Relative humidity and fine fuel moisture recovery will be about similar to last night, but weather conditions will keep fuel moistures and relative humidity higher than yesterday. Strong winds will offset this and allow for fire spread, in most fuel types on the fire.

Without rain fine fuel moistures will be in the 7-10 range. Remember red needled trees have higher dead fine fuel loads and will readily burn. This will also contribute to torching and spotting.

Spread direction will generally be with the wind, but topographic influences could alter spread direction. Winds will be changing direction to more northerly direction so watch for this. Downslope backing will be possible, but with minimal spread rate and flame lengths. Spotting distance could approach 3/8 of a mile. Ignitions from those spots are lower today, between 29-35 percent.

SPECIFIC:

Division N: The fire moved downslope to the east yesterday and this will continue today backed by strong winds. With winds switching NW it's possible for the fire to move SE along the East aspect and this would be a wide front, but spread rates are slow at 1-2 ch/hr with 2 foot flames. Head spread rates in timber upslope and with wind are 16-19 ch/hr with 6-8ft. flame lengths. Group torching and short range spotting uphill are possible. Dead grass fuels/shrubs are very sensitive to fuel moisture so upslope, downwind spread rates vary from 9-44 ch/hr with 2-7 foot flame lengths.

Division S: With west winds initially the fire will try and move downslope on the east aspect. Spread rates and flame lengths are similar to Division N. Fuel conditions become more favorable for burning as you move to DP 4 and DP 5. There's potential for the fire to flank down the ridge towards the south, particularly once winds go northwest. Potential for spotting across the drain also improves further south.

AIR OPERATIONS: Sunrise is at 6:38 and sunset is at 20:35. Gusty winds, rain and thunderstorms are possible.

SAFETY: How many watch out situations can you name today? Frontal passage, chance of rain/thunderstorm, strong winds changing directions, dead timber falling in the strong wind. With the fire's movement yesterday and overnight be sure you assess the conditions and keep track of the humidity and wind. They are going to drive the day.

DIVISION ASSIGNMENT LIST		1. Branch		2. Division/Group DIV November			
3. Incident Name Morrell Complex		4. Operational Period Date: 8/21/2015 Time: 0700-2100					
5. Operations Personnel							
Operations Chief	Steve Goldman Keith Murphy (t)		Division/Group Supervisor	Eric Rebitzke Louis Fleming (t)			
Branch Director		Air Attack Supervisor No.					
6. Resources Assigned this Period							
Strike Team/Task Force/ Resource Designator	Leader	Number Persons	Trans. Needed	Drop Off PT./Time	Pick Up PT./Time		
O-, HEQB	Eric Held	1	N	0700	2100		
E-116, WT, T2; Frenchtown w/ EMT	Rob Lindig	1	N	0700	2100		
E-108, Excavator ; Blackfoot S&S	Art Wear	2	N	0700	2100		
E-121, Eng. T6; Windswept LLC	C. Schiefelbein	3	N	0700	2100		
E-112, Skidgine T1; Soft Track Attack	Josh Covey	2	N	0700	2100		
O-116, FAL1; Dillon Fallers	R. Dillon	2	N	0700	2100		
C-107, Type 2 IA Crew New Jersey #1	T. Rainer	9	N	0700	2100		
O- ; EMT	Steve Armiger			DP 1 0700	2100		
O- ; EMT	D. Peterson			DP 1 0700	2100		
7. Control Operations Hold & mop up excavation line on west and north flank. Complete excavator line around the Triangle and install hose lay around the Triangle as crews & supplies become available. Engines and Skidgines mop up along Repeater Road. Identify and mitigate hazard trees within 100 feet of Roads.							
8. Special Instructions Resources may be requested for District Initial Attack. Assess resource allocations based on fire growth. Establish new Safety Zones and Escape Routes based on active fire. RON at Fawn Base Camp Commo with lifefight: TAN-155.340 RX/Tx (TAN) 1300 resupply orders, 1400 Division Resource Needs							
9. Division/Group Communication Summary							
Function	Frequency	System	Channel	Function	Frequency	System	Channel
Command Lolo East Direct	164.700 TX 123.0	King NIFC		Command 2 Forest Admin	None		
Primary Tactical Division N TAC 2	170.550TX/RX	King NIFC		Air to Ground East	169.825	King NIFC	Morrell A/G
Prepared by (Resource Unit Leader) Paul Olson		Approved by (Planning Section Chief) Peter Fischer		Date 8/20/2015		Time 1930	

DIVISION ASSIGNMENT LIST		1. Branch		2. Division/Group DIV Sierra			
3. Incident Name Morrell Complex		4. Operational Period Date: 8/21/2015 Time: 0700-2100					
5. Operations Personnel							
Operations Chief		Steve Goldman Keith Murphy (t)		Division/Group Supervisor		Maris Gabliks	
6. Resources Assigned this Period							
Strike Team/Task Force/ Resource Designator		Leader	Number Persons	Trans. Needed	Drop Off PT./Time	Pick Up PT./Time	
0-, TFLD		Steve Teeter	1	N	0700	2100	
0-, TFLD		Scott Crist	1	N	0700	2100	
0-, TFLD (t) is also EMT		Mitch Dana (t)	1	N	0700	2100	
0-, TFLD		Greg Gulan	1	N	0700	2100	
E-104, Fell/Bunch; Petersen		B. Copenhaver	2	N	0700	2100	
E-118, WT T3; Leading Edge		Mike Kearney	1	N	0700	2100	
E-119, WT T3; Mission Mtn Star		Gary Steele	2	N	0700	2100	
E-2, Excavator T3; I Know Jack		D. Hoxworth	1	N	0700	2100	
E-120, Eng, T6; Wildland Fire Mgmt		Nick Brown	3	N	0700	2100	
E-124, Eng, T6; Mt Metal Works		Joe Wetzel	3	N	0700	2100	
E-123, Eng, T6; WI CNF 651 (Local IA)			4	N	0700	2100	
E-110, Skidgine, T1; Obadiahs		Larry Pease	1	N	0700	2100	
E-107, Excavator T3; Timber T&S		Rob Brown	2	N	0700	2100	
E-111, Skidgine T3; Parke Logging		Cleve Bolster	2	N	0700	2100	
C-107, Type 2 IA Crew; New Jersey #1		L. Birch	10	N	0700	2100	
O-117, FAL1; Brothers Fire		Devereaux	2	N	0700	2100	
7. Control Operations Construct excavation line on south flank and install hose lays for mop up. Keep fire above 720 road, Engines and Skidgines to mop up along road. Complete excavator line and install hose lay between DP4 & DP5. Identify and mitigate hazard trees within 100 feet of Roads.							
8. Special Instructions Resources may be requested for District Initial Attack. Assess resource allocations based on fire growth. Establish new Safety Zones and Escape Routes based on active fire. RON at Fawn Base Camp. Commo with lifefight: TAN-155.340 RX/Tx (TAN) 1300 resupply orders, 1400 Division Resource Needs							
9. Division/Group Communication Summary							
Function	Frequency	System	Channel	Function	Frequency	System	Channel
Command Lolo East Direct	164.700 TX 123.0	King NIFC		Command 2 Forest Admin	None		
Primary Tactical Division N TAC 2	170.550TX/RX	King NIFC		Air to Ground East	169.825	King NIFC	Morrell A/G
Prepared by (Resource Unit Leader) Paul Olson		Approved by (Planning Section Chief) Peter Fischer			Date 8/20/2015		Time 1945

DIVISION ASSIGNMENT LIST		1. Branch		2. Division/Group DIV Staging			
3. Incident Name Morrell Complex		4. Operational Period Date: 8/20/2015 Time: 0700-2100					
5. Operations Personnel							
Operations Chief	Steve Goldman Keith Murphy (t)		Division/Group Supervisor	Jay Saunders			
Branch Director		Air Attack Supervisor No.					
6. Resources Assigned this Period							
O-, STAM(t)	Rich Dentroux	1	N	0700	2100		
E-115 , WT T2; B&D Excavation	Dale Carter	1	N	0700	2100		
E-117 , WT T2; Monture Enterprises	Tom Ide	2	N	0700	2100		
E-114, WT T2; Petersen	J. Hammerer	1	N	0700	2100		
E-112 , Skidgine T1; Soft Track Attack	Josh Covey	2	N	0700	2100		
E-109 , Skidgine T1; Obadiahs	Woody Chain	2	N	0700	2100		
E-105 , DOZ T2; Petersen	Scott Petersen	1	N	0700	2100		
E-114, WT T2							
7. Control Operations Planning Ops will assign as needed.							
8. Special Instructions RON at Fawn Base Camp Commo with lifefight: TAN-155.340 RX/Tx (TAN) 1300 resupply orders, 1400 Division Resource Needs							
9. Division/Group Communication Summary							
Function	Frequency	System	Channel	Function	Frequency	System	Channel
Command Lolo East Direct	164.700 TX 123.0	King NIFC		Command 2 Forest Admin	None		
Primary Tactical Division N TAC 2	170.550TX/RX	King NIFC		Air to Ground East	169.825	King NIFC	Morrell A/G
Prepared by (Resource Unit Leader) Paul Olson		Approved by (Planning Section Chief) Peter Fischer		Date 8/19/2015		Time 1945	

Morrell Complex

EA IMT Contact List



Name	Position	Mobile
Crist, Scott	Division Supervisor	618-521-2180
Delrossi, Ken	Status Check-in (T)	609-381-1464
Dillon, Matt	Training Specialist	610-420-9911
Fauskee, Jeremy	Situation Unit Leader	320-629-6599
Fischer, Pete	Planning Section Chief	304-642-1801
Fitpatrick, Butch	Safety Officer	715-891-2427
Gabliks, Maris	Division Supervisor	610-742-7854
Glesener, BJ	Geo Spacial Analyst	218-360-1813
Goldman, Steve	Operations Section Chief	989-305-0868
Grant, Jim	Incident Commander	715-493-9137
Gray, Jim	Logistics Section Chief	231-564-0038
Gulan, Greg	Division Supervisor	715-614-2313
Hacn, Ed	Facilities Unit Leader	
Heartlove, Bob	Safety Officer (T)	610-742-7593
Jussila, Jerry	Deputy Logistics Chief	218-235-8983
Koele, Catherine	Public Information Officer	608-219-9075
Linn, Scott	GISS (T)	715-889-1824
Lori, Gale	Computer Tech Specialist	603-520-0243
Lucas, Mary	Resource Unit Leader	715-499-3881
Madill, Bob	Liaison Officer (T)	414-207-2224
Mullman, Chad	Public Information Officer (T)	406-677-3922
Murphy, Keith	Operations Section Chief (T)	906-250-1382
Niles, Debbie	Time Unit Leader	989-745-2394
Olson, Paul	Resource Unit Leader	218-392-0239
Paxton, Bill	Liaison Officer	573-429-5193
Rebitze, Eric	Division Supervisor	970-376-3150
Rodbell, Phillip	Time Recorder	610-680-7952
Saunders, Jay	Operations Section Chief (T)	715-889-1470
Stampfly, Jeff	Fire Behavior Analyst	906-202-0211
Stern, Roy	Ground Support Unit Leader	920-285-5155
Trapp, Terry	Operations Section Chief	715-610-3695
Wab, Kevin	Computer Tech Specialist	208-768-7893
White, Bob	Medical Unit Leader	715-415-2400
Wilberger, Chad	Ordering Manager (T)	740-519-9166

Last updated 8/19 @ 1930

Trainees

Do you have you have an initiated Position Task Book?

If so, please come see the Incident Training Specialist (TNSP) in the Planning Room behind the Cafeteria at ICP; also bring your Incident Qualification Card (Red Card), open task book and your Trainer/Evaluator.

Attached is a blank Incident Trainee/Trainer Data Form (TNSP-1). Bring this form with when you visit. Complete what you can on the form; the TNSP can assist with any questions or concerns.

**NWCC Task Book for the Position of:
TRAINING SPECIALIST
(TNSP)**

FMS 111-28 **JUNE 2009**

Task Book Acquired To: _____

Trainee's Name: _____

Home Unit Agency: _____

Home Unit Phone Number: _____

Task Book Initiated By: _____

Official's Name: _____

Home Unit Title: _____

Home Unit Agency: _____

Home Unit Phone Number: _____

Home Unit Address: _____

Date Initiated: _____

The material contained in this book accurately depicts the performance expected of the position for which it was developed. This task book is approved for use as a position qualification document in accordance with the instructions contained herein.

Incident Trainee/Trainer Data Form

PLEASE PRINT

A. Trainee Data

Trainee Name: _____ Circle One: Male Female
(Last Name, First Name, MI)

Trainee Position: _____ Request # (A,C,E, or O): _____

5 Letter Agency Designator: _____ Office Phone #: _____
(Example: WV-WVS)

Date Assigned to Incident: _____ Anticipated Release Date: _____

Agency: _____ Employment Status: _____
(Regular Agency, Seasonal, Casual)

Trainee Work Address: _____

City: _____ State: _____ Zip: _____

B. Home Unit Training Officer

Name: _____ Office Phone #: _____

Work Address: _____

City: _____ State: _____ Zip: _____

C. Trainee Prerequisites

1. Valid Red Card or Agency Certification Card? (If not, you must obtain written concurrence from Home Unit) _____ Yes _____ No
2. Trainee has current position task book issued by home unit? _____ Yes _____ No
3. Trainee has incident issued position task book with concurrence by Home Unit? _____ Yes _____ No

D. Trainer/Evaluator Data

Trainer/Evaluator Name: _____ Position: _____

Agency: _____

Work Address: _____

City: _____ State: _____ Zip: _____

Request # (A,C,E, or O): _____ Anticipated Release Date: _____

Office Phone: _____

E. Trainee Goals (3 tasks or objectives you would like to address from your PTB):

1. _____

2. _____

3. _____

SAFETY MESSAGE

Fire Watch Out of the Day



15. WIND INCREASES AND/OR CHANGES DIRECTION

Hazard Mitigations

- Keep informed of the weather conditions and forecasts.
- Take spot weather readings regularly.
- Know what the fire is doing at all times.
- Base all actions on current and expected fire behavior.

PERSONAL WELL-BEING AND HYGIENE

Your mother was right-wash your hands! Get proper rest so you don't invite accidents, injuries or illness.

When should you wash your hands?

You should wash your hands often, probably more often than you know. It is especially important to wash your hands:

- Before, during, and after you prepare food
- Before you eat, and after you use the latrine
- When using tobacco products or putting in contact lenses
- When your hands are dirty and more frequently if around someone who is ill



COMMUNICATIONS:

“Maintain prompt communications with your forces, your supervisor, and adjoin forces at all times.”

- Ensure communications are in place and all personnel know frequencies.
- Ensure all personnel have received instructions and they are understood.
- Ensure all personnel know operations assignments and emergency procedures

Bear Safety:

- Clean up all debris and trash during each operational period;
- Keep all food, toiletries and trash items away from sleeping areas; use bear-proof containers or hard-sided vehicles for storage (not in the beds of pickup trucks);
- Collect and backhaul garbage daily before sunset.

Safety Officers: Butch Fitzpatrick and Bob Hartlove

Incident Risk Assessment Worksheet					1. Incident Name/Number Morrell Complex		2. Location Seeley Lake, MT - Lolo NF				
Identification of Hazards and Risk Assessment					3. Name and Title of Analyst Fitzpatrick / Hartlove - SOF2 / SOF2-t		4. Date Thursday, August 20, 2015				
5. Pre-Control					6. Control or Abatement Action (Engineering, Administrative, PPE, Avoidance, Education, etc)		7. Post-Control				
8. Location	9. Hazard	10. Hazard Probability	11. Severity Code	12. RAC	Actions (double-click in cell then click alt + enter to add a line)	13. Hazard Probability	14. Severity Code	15. RAC	16. Acceptable (Yes/No)	Export (Yes/No)	
All Divisions	Heavy Equipment Operations	Occasional C	Catastrophic I	Serious	Post lookouts when working in vicinity of equipment operations; maintain appropriate space; make sure operator is aware of your presence; avoid working below	Rarely D	Catastrophic I	Moderate	Yes	No	
All areas	Bear Habitat	Likely B	Catastrophic I	Critical	Clean up all debris and trash during each operational period; Keep all food, toiletries and trash items in bear-proof containers; Separate sleeping and eating areas by at least 100 yards; Collect and backhaul garbage daily before sunset.	Occasional C	Catastrophic I	Serious	Yes	No	
All Divisions	Driving & Traffic	Frequently A	Significant III	Serious	Post appropriate traffic and parking signage; Follow posted speed limits; drive defensively; establish one-way travel where needed; establish communications on blind areas; establish separate entrance and parking areas for heavy equipment; avoid blocking roadways; Be aware of peak tourist traffic.	Rarely D	Significant III	Negligible	Yes	No	
All Divisions	Hazard Trees and bug-killed timber	Likely B	Catastrophic I	Critical	Identify and mark hazard trees; avoid entry in designated hazard areas until hazards are removed ; If removal is not possible, avoid entry; use appropriate level of falling teams. Post lookouts during falling operations. Employ heavy equipment when necessary for tree removal.	Rarely D	Catastrophic I	Moderate	Yes	No	
All Divisions	Potential for re-burn	Likely B	Catastrophic I	Critical	Employee LCES, with APPROPRIATE Safety Zones; Burnout control lines when conditions are appropriate; Isolate spots when necessary, or when distant from main fire; Be aware of changes in weather and or fire behavior. Use direct attack, cold trail and employ trenches where	Occasional C	Catastrophic I	Serious	Yes	No	
All Divisions	Steep Terrain & Rolling Debris	Occasional C	Significant III	Minor	Post lookouts for rolling rocks and logs. Use cup trenches during line construction and mopup	Occasional C	Significant III	Minor	Yes	No	
All areas	Wildlife & Livestock	Likely B	Significant III	Moderate	Clean windshields and headlights; Watch for wildlife crossing roadways, particularly at dusk.	Occasional C	Significant III	Minor	Yes	No	
All Divisions	Resource Availability	Frequently A	Critical II	Critical	Use point protection strategy or disengage until resources become available	Occasional C	Critical II	Moderate	Yes	No	
All Divisions	Bees	Likely B	Critical II	Serious	Use full PPE, with sleeves rolled down; Identify locations of bees encountered - and pass along information to others; If stung by bees, let someone know - even if no previous allergic reaction has been experienced.	Occasional C	Critical II	Moderate	Yes	No	
All Divisions	Communications	Likely B	Catastrophic I	Critical	Establish Base Communications at ICP with repeater located on Morrell Lookout to cover the major portion of the incident area. Will need to add "Human Repeater" when resources operate on the east side of the Richmond Ridge.	Rarely D	Catastrophic I	Moderate	No		

Lolo National Forest

BEAR SAFETY AND FOOD STORAGE PROTOCOL

Grizzlies and black bears are very large omnivores at the top of the food chain, and their actions can be unpredictable. Firefighters assigned to small or large incidents on the Lolo NF need to be aware that you share this landscape with the grizzly and black bear, and understand basic procedures which are expected to be followed to protect you and the bear from each other. Appropriate equipment and briefings should be supplied by local district offices during an incident to make sure all camp and fireline activities comply with these regulations. Preventative measures and basic protocols are as follows (not all inclusive).

Main Fire Camps, ICP, and Helicopter/Aviation Bases

- If possible ICP and fire camps should be located in areas free of and well away from cover that may allow bears to approach undetected.
- During daytime hours, attractants, including human, pet and livestock food (except baled or cubed hay without additives) and garbage shall be attended or stored in a bear-resistant manner when unattended.
- Cooking and eating facilities must be located at least 100 yards from sleeping areas.
- Food storage should be in the same area as cooking and eating facilities. Store all food, coolers, toiletries and cosmetics, soda, energy drinks, tobacco, or other attractants inside hard-sided vehicles, metal cages, or other hard-sided secure structures when they are not being used. These items may not be stored in the sleeping areas, in open truck beds, or in otherwise unsecured locations.
- Garbage must be collected daily at sundown and either transported off the forest or stored in a hard-sided vehicle or other approved container. Bear-proof garbage cans are recommended for daily collection.
- During nighttime hours, in front county areas, attractants must be stored in a "bear resistant manner" unless it is being prepared for eating, consumed, transported, or prepared for acceptable storage.

Drop Points

- Acceptable storage must be in a hard-sided vehicle, hung 10 feet high and 4 feet from any supporting branch, or in an IGBC approved bear-proof container. Possible methods of securing bear attractants at drop points include trucks with camper tops, hard-sided utility or horse trailers, 55 gallon drums with locking snap rings, steel job boxes, individual bear-proof backpacking containers, or similar.
- All food items or liquids except water must be acceptably stored while unattended at drop points.

Fireline

- There should be regular safety briefings and/or alerts for all personnel heading to the fireline.
- All food and liquids except water should be kept on firefighting personnel at all times, or otherwise attended.

All waste should be collected and transported off of the fireline !!!!

Incident Within an Incident procedure

The Incident Commander (IC) is responsible for overall action in case of an accident.

Identify One On-Scene Point of Contact (POC) (note for ICP based accidents, Logistics Section Chief (LSC) assumes role of Operations Section Chief (OSC) below)

At the scene of a medical emergency, an on-scene POC will be determined or designated by chain of command. The intent is to put the highest qualified/experienced person as the initial POC. Under no circumstances will response actions be delayed waiting for an OSC, Division Supervisor (DIVS), Safety Officer (SOF2), or other overhead to arrive at the scene. Upon occurrence of an accident requiring evacuation, or a fatality, an OSC should go directly to the scene or designate appropriate Operations Section personnel to take control of the situation and direct necessary actions. Until the OSC or designee arrives, the DIVS, SOF2 or appropriate Section Supervisory Overhead person nearest the scene will go to the scene and assume POC duties. This POC and the person assessing/treating the patient may or may not be the same person. The POC will:

- Take charge of the scene and identify/determine who is in charge of assessing and treating the patient.
- Use the Incident Communication Protocol (see ICS 206 Medical Plan) to relay critical information regarding patient assessment, transportation, and resource needs.
- Coordinate the request for transportation and/or other resources based on patient assessment.
- Ensure that information about patient assessment, transportation or other resource needs is transmitted directly to the Incident Command Post Communications in order to reduce the time it takes to communicate essential information and to limit the potential for miscommunication.

Immediate and clear communication shall be established between the personnel on scene and the OSC and/or nearby Operations Section overhead to determine who can reach the scene the quickest and coordinate action. OSCs and other Operations Section overhead personnel must use good judgment to maintain overall incident control and delegate accident scene control to other responsible Operations Section personnel if necessary.

Upon arrival at the accident scene, the person who has been designated as responsible for action will take immediate action to clear the scene of all unnecessary personnel and equipment. Personnel will be re-assigned to suppression duties (if possible) or relieved and sent to camp as necessary. Incident Objectives should be continued or maintained wherever possible.

All personnel assigned to accident mitigation and support shall be immediately advised as to who is in charge of the accident scene (the initial POC and any subsequent POC changes).

A SOF2 or SOFR will respond immediately to the scene to assist the person in charge (initial POC) or assume POC duties. If any air resources (including non-incident based) will be needed for evac/extraction, notify Air Support (ASGS) to coordinate.

If requested by Operations, the Communications Unit Leader (COML) or Incident Communications Manager (INCM) will take immediate action to designate a radio frequency for the sole use of all accident related communications and the Medical Unit Leader (MEDL)/ Incident Medical Specialist Manager (IMSM) notified. COML will notify IC, LSC, Planning Section Chief (PSC), Finance Section Chief (FSC) and Public Information Officer (PIO) via radio or runner as soon as possible.

Immediately upon notification of an accident or fatality requiring emergency action, the MEDL/IMSM, IC, PSC, LSC, and PIO will go to communications to assist in coordination of accident related actions. (MEDL/IMSM and others may respond to scene if ICP based accident)

The PSC will make contact with the Local Agency Administrator or their representative. The LOFR will contact any cooperating agencies. If the accident involves a fatality, the Agency Administrator will contact the Sheriff's Office, Coroner's Office, and the Employing Agency of the victim. The LSC/PSC will assure that an individual is assigned to document all communications regarding the accident on a separate communications log to be filed with the accident records.

The name(s) of the injured **will NOT be used** at any time during any open communications in the accident mitigation process. No information regarding the accident or fatality will be released to the public without first going through the IC.

Cameras, cell phones, and other social network devices are forbidden at an emergency accident/injury incident without IC authorization. Transmission of pictures or information of an injury/accident will result in immediate release and reprimand notification to the home unit. Unauthorized release or transmission of incident related information and/or photographs could result in civil action against the party making the unauthorized release.

ICS-206	1. Incident Name	2. Date Prepared	3. Time Prepared	4. Operational Period
MEDICAL PLAN	Morrell Complex	8-20-2015	1800	Day Shift 8-21-15

5. Incident Medical Aid Station					
Medical Aid Stations		Location		Level of Care	
				ALS	BLS
ICP	715-415-2400	Seeley Lake Elementary School			X
Danielle Peterson	406-939-0331	DP-1			X
Steve Armiger	406-660-1078	DP-1			X

6. Transportation							
A. Ground Ambulance Services							
Name		Address		Phone		Level of Care	
						ALS	BLS
Seeley Lake Ambulance Service		Seeley Lake, MT		911			X

B. Air Medivac Services							
Name		Location		Phone		Level of Care	
						ALS	BLS
Northwest Med Star		Missoula, MT	Medivac from ground only	911		X	
Two Bear Aviation		Kalisbell, MT	Hoist capable - Night Ops capable	911		X	

7. Hospitals								
	Address	Travel Time		Phone	Helipad		Burn Center	
		Air	Grnd		Yes	No	Yes	No
Seeley Swan Medical Center	3050 Hey 83 Seeley Lake, MT		40 min.	206-677-2277	X			X
St Patrick Hospital	500 West Broadway Missoula, MT 59802	20 min.	60 min.	406-543-7271	X			X
Community Medical Center	2827 Fort Missoula Rd Missoula, MT 59804	20 min.	60 min	406-728-4100	X			X
Sacred Heart Medical Center	W101 8 th Avenue Spokane, WA			509-474-4684	X		X	
Harborview Medical Center	325 Ninth Avenue Seattle, WA			206-223-3127	X		X	
University of Utah	50 N. Medical Drive Salt Lake City, UT			801-581-2700	X		X	

8. Medical Emergency Procedures
 Upon occurrence of a "Major Medical" or accident involving significant injury on the fire line, the closest DIVS should respond directly to the scene to take control of the situation and direct necessary actions. If the DIVS is unavailable, the nearest fire line supervisor or leader needs to take charge.

1. Communications will clear all radio traffic on the Incident Command Channel-use to coordinate response as needed.
Do Not Use Names. Identify: 1) The on-scene Point Of Contact (i.e. TFLD Smith); 2) Describe the nature of the accident.
2. Obtain and facilitate nearest EMT to the scene.
DIVS is in charge of the scene. Identify to Communications medical personnel on site.
3. Check nature of the problem, # of patients, status, vitals & location. (GPS if possible) Request additional resources if needed.
4. Coordinate and facilitate appropriate transportation for injured with EMT in charge of patient(s).
5. Remove all unnecessary personnel from the scene.
6. Secure scene, identify witnesses for later investigation. Keep a log.
7. Inform Communications of any changes on scene for Point Of Contact.

LIFE SAFETY IS THE NUMBER 1 PRIORITY ON THIS INCIDENT
 The term "Medivac" is for Emergency Medical Evacuations Only

Medical Unit - 0700-2100 hrs. Phone 715-415-2400	
9. Prepared by Medical Unit Leader	10. Reviewed by Safety Officer
Robert White	Butch Fitzpatrick

MEDICAL PLAN (ICS 206 WF)

Medical Incident Report

FOR ALL MEDICAL EMERGENCIES: IDENTIFY ON SCENE INCIDENT COMMANDER BY NAME AND POSITION AND ANNOUNCE "MEDICAL EMERGENCY" TO INITIATE RESPONSE FROM IMT COMMUNICATIONS/DISPATCH.

Use items one through nine to communicate situation to communications/dispatch.

1. CONTACT COMMUNICATIONS/DISPATCH

Ex: "Communications, Div. Alpha. Stand-by for Priority Medical Incident Report." (If life threatening request designated frequency be cleared for emergency traffic.)

2. INCIDENT STATUS: Provide incident summary and command structure.

Nature of Injury/Illness		<i>Describe the injury (Ex: Broken leg with bleeding)</i>
Incident Name		<i>Geographic Name + "Medical" (Ex: Trout Meadow Medical)</i>
Incident Commander		<i>Name of IC</i>
Patient Care		<i>Name of Care Provider (Ex: EMT Smith)</i>

3. INITIAL PATIENT ASSESSMENT: Complete this section for each patient. This is only a brief, initial assessment. Provide additional patient info after completing this 9 Line Report.

Number of Patients:	Male / Female	Age:	Weight:
Conscious? <input type="checkbox"/> YES <input type="checkbox"/> NO = MEDEVAC!			
Breathing? <input type="checkbox"/> YES <input type="checkbox"/> NO = MEDEVAC!			
Mechanism of Injury: <i>What caused the injury?</i>			
Lat/Long (Datum WGS84) <i>Ex: N 40° 42.45' x W 123° 03.24'</i>			

4. SEVERITY OF EMERGENCY, TRANSPORT PRIORITY

SEVERITY	TRANSPORT PRIORITY
<input type="checkbox"/> URGENT-RED Life threatening injury or illness. <i>Ex: Unconscious, difficulty breathing, bleeding severely, 2° – 3° burns more than 4 palm sizes, heat stroke, disoriented.</i>	Ambulance or MEDEVAC helicopter. Evacuation need is IMMEDIATE.
<input type="checkbox"/> PRIORITY-YELLOW Serious Injury or illness. <i>Ex: Significant trauma, not able to walk, 2° – 3° burns not more than 1-2 palm sizes.</i>	Ambulance or consider air transport if at remote location. Evacuation may be DELAYED.
<input type="checkbox"/> ROUTINE-GREEN Not a life threatening injury or illness. <i>Ex: Sprains, strains, minor heat-related illness.</i>	Non-Emergency. Evacuation considered Routine of Convenience.

5. TRANSPORT PLAN:

Air Transport: (Agency Aircraft Preferred)

<input type="checkbox"/> Helispot	<input type="checkbox"/> Short-haul/Hoist	<input type="checkbox"/> Life Flight	<input type="checkbox"/> Other
Ground Transport:			
<input type="checkbox"/> Self-Extract	<input type="checkbox"/> Carry-Out	<input type="checkbox"/> Ambulance	<input type="checkbox"/> Other

6. ADDITIONAL RESOURCE/EQUIPMENT NEEDS:

<input type="checkbox"/> Paramedic/EMT(s)	<input type="checkbox"/> Crew(s)	<input type="checkbox"/> SKED/Backboard/C-Collar
<input type="checkbox"/> Burn Sheet(s)	<input type="checkbox"/> Oxygen	<input type="checkbox"/> Trauma Bag
<input type="checkbox"/> Medication(s)	<input type="checkbox"/> IV/Fluid(s)	<input type="checkbox"/> Cardiac Monitor/AED
<input type="checkbox"/> Other (i.e. splints, rope rescue, wheeled litter)		

7. COMMUNICATIONS:

Function	Channel Name/Number	Receive (Rx)	Tone/NAC *	Transmit (Tx)	Tone/NAC *
<i>Ex: Command</i>	<i>Forest Rpt, Ch. 2</i>	<i>168.3250</i>	<i>110.9</i>	<i>171.4325</i>	<i>110.9</i>
COMMAND					
AIR-TO-GRND					
TACTICAL					

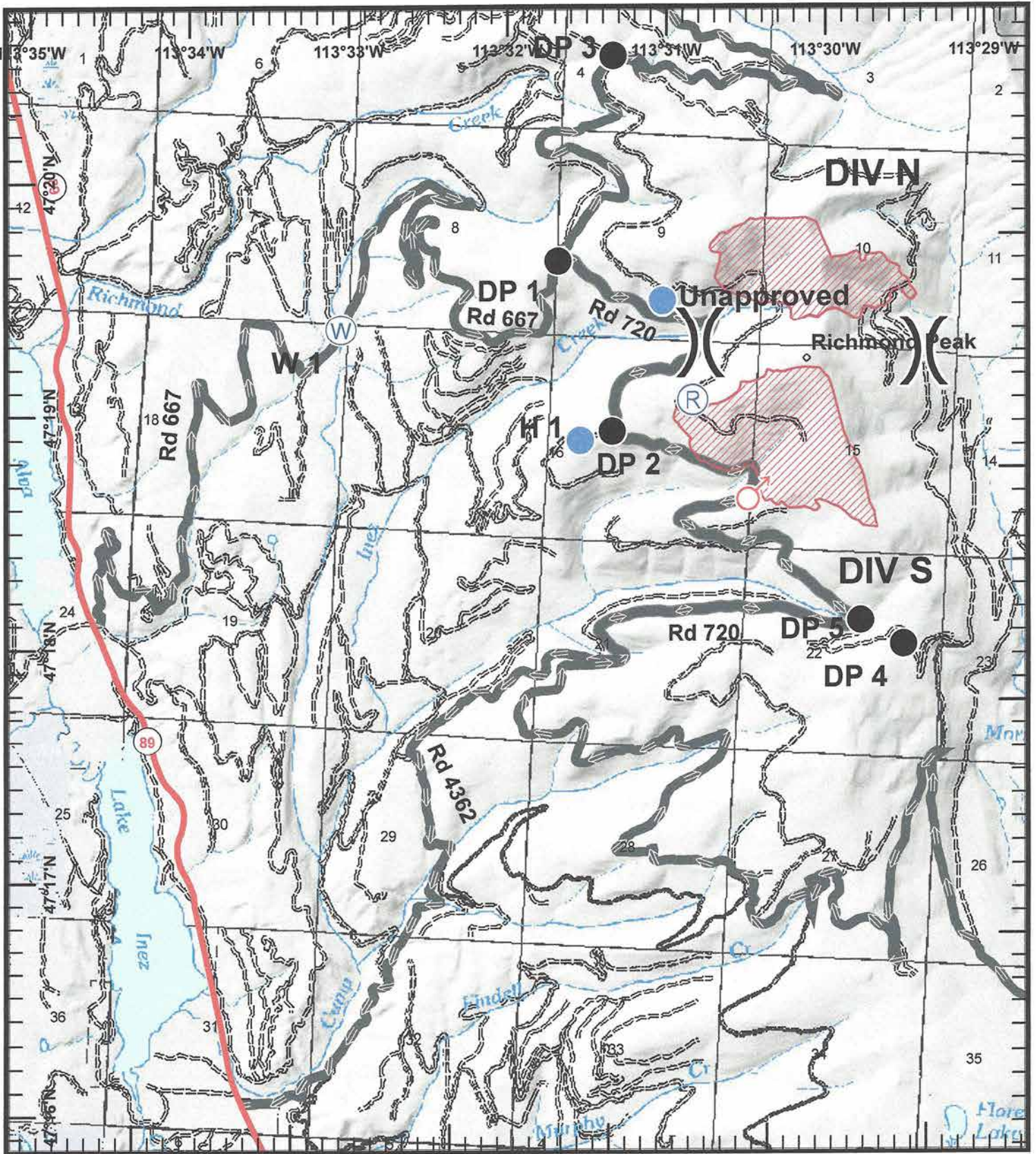
*(NAC for digital radio system)

8. EVACUATION LOCATION:

Lat/Long (Datum WGS84) <i>EX: N 40 42.45' x W 123 03.24'</i>	
Patient's ETA to Evacuation Location:	
Helispot/Extraction Size and Hazards:	

9. CONTINGENCY:

Considerations: <i>If primary options fail, what actions can be implemented in conjunction with primary evacuation method? Be thinking ahead...</i>	REMEMBER: Confirm ETA's of resources ordered Act according to your level of training Be Alert. Keep Calm. Think Clearly. Act Decisively.
--	--



Morrell Complex
MT-LNF-000851
August 20, 2015
NAD 1983
Degrees Decimal Minutes
475+ Acres

Legend



Camp



Drop Point

Transportation Map



Helispot



ICP



Repeater



Spot Fire



Water Source



downhill only

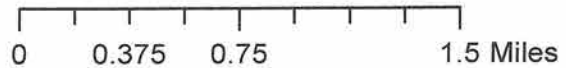


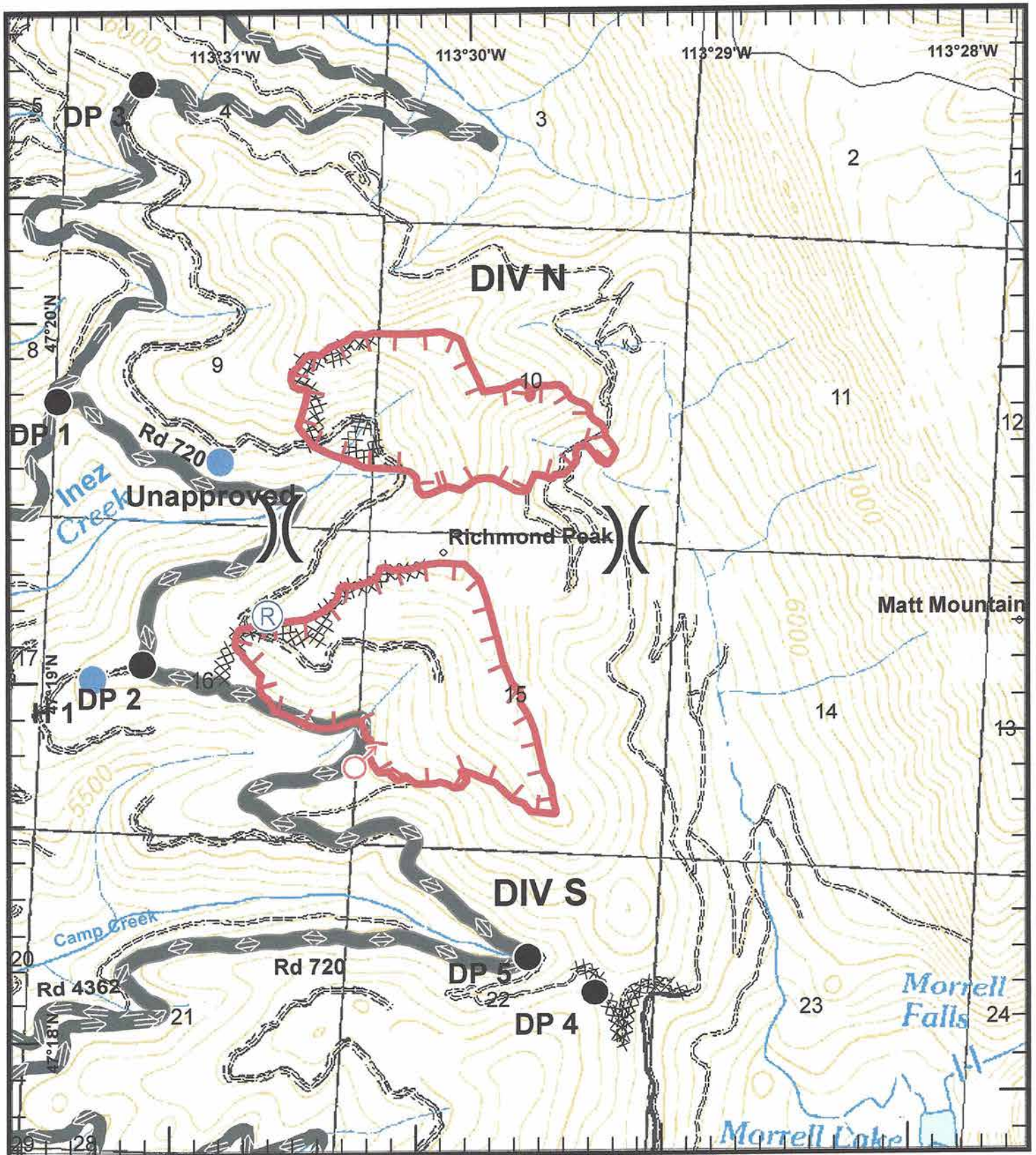
two way



uphill only

W. Glesener
 8/20/2015
 19:00 Hours





Morrell Complex
MT-LNF-000851
August 21, 2015
475+ acres
NAD 1983

Legend

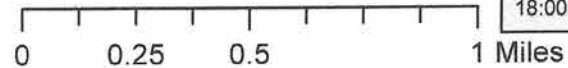
Roads

- downhill only
- two way
- uphill only
- Camp

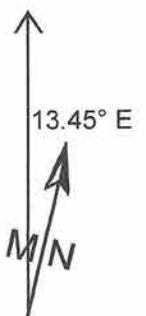
- Drop Point
- Helispot
- ICP
- Repeater

- Spot Fire
- Water Source

- Uncontrolled Fire Edge
- Completed Dozer Line



S.Linn
 8/20/2015
 18:00 Hours



Morrell Fire Management Action Points (MAPS)

Seeley Lake Ranger District

Lolo National Forest

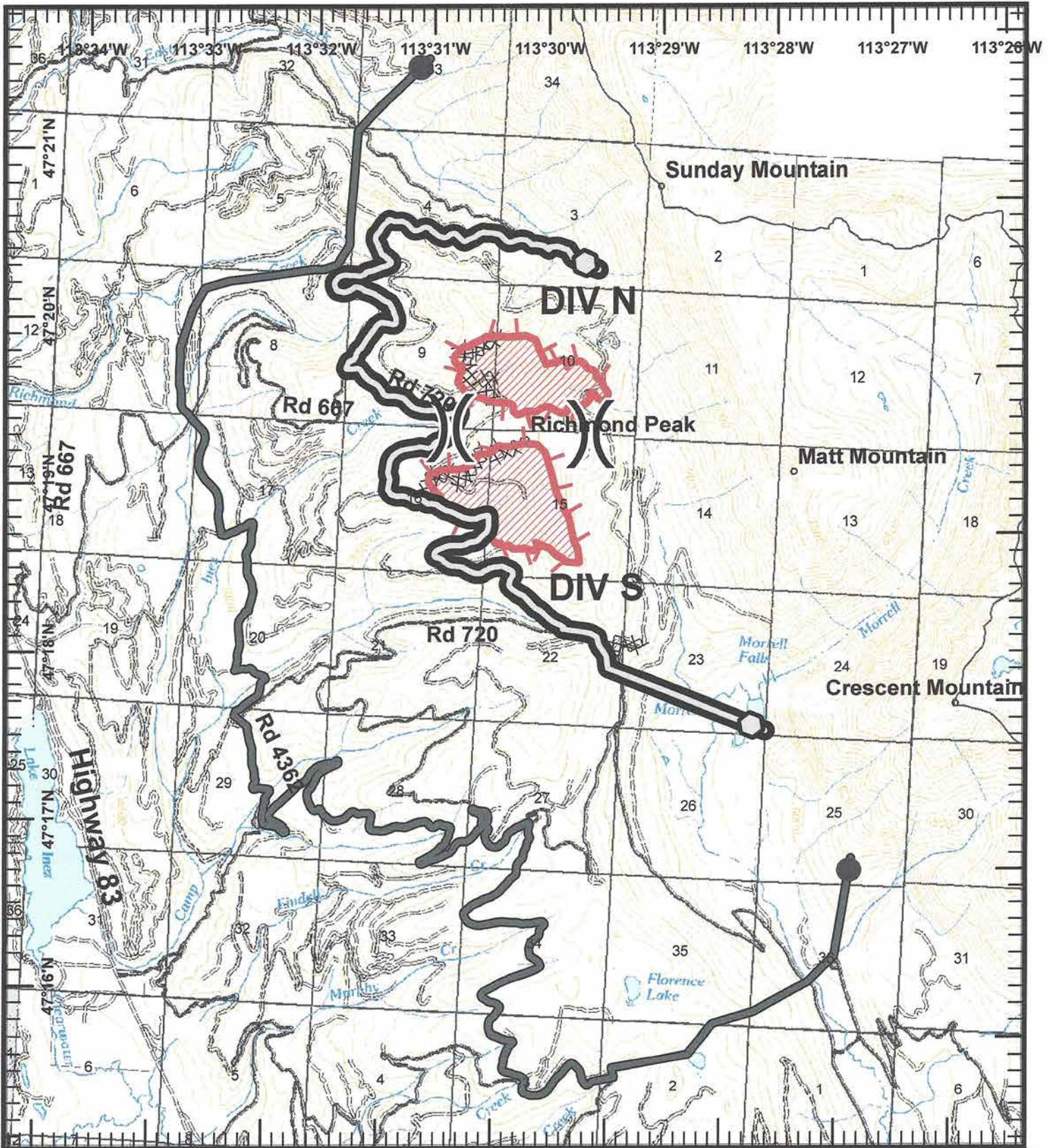
Management Action Points (also called "trigger points"). Either geographic points on the ground or specified points in time where an escalation or alteration of management actions is warranted. Timely implementation of the planned actions when the fire reaches the action point is generally critical to successful accomplishment of the objectives.

Line Operations will contact Planning Operations and IC immediately when MAP's have been reached and any actions will come down through the chain of command. IC will notify Agency Administrator or designee of specific management action points that have been reached. IC / OPS2 will advise PIO2 & LOFR of actions, so public service announcements can be released.

Contact NorthWestern Energy at 888-467-2669 before any imminent impacts from the fire, firing operations and locations for possible de-charging of specific lines for safety

MAP 1 is mainly Forest Road (FR) 720 with several portions of line construction needed on the south end, easily put in with a dozer. If the fire was to get established beyond MAP 1 and fire behavior indicates fire growth exceeding the capabilities of the resources at hand, prompt mobilization of high priority resources would be needed. The potential values at risk including structures, timber and recreation would require an additional three type 1 and six Type 2 IA Handcrews, six Type 6 engines, two Type 2 dozers and 12 supervision overhead. A dedicated aviation operation would also be necessary using one type 3 helicopter, two Type 2 and one Type 1 helicopter, air tanker support would likely be needed as well.

MAP 2 is a mix of private ownership boundary, un-numbered non-system roads, FR 2166, FR 720 and approximately 1.5 miles of new line construction. The new line can easily be constructed with a dozer because of relatively moderate terrain. If the fire was to become established beyond MAP 2 and fire behavior indicates fire growth exceeding the capabilities of the resources at hand, rapid mobilization of high priority resources from multiple agencies would be necessary. Numerous private residences and structures would be threatened with evacuations ordered, State Hwy 83 would likely have to be closed because of the fire approaching the road, reduced visibility due to smoke and heavy emergency fire traffic. The complexities and values at risk would necessitate Unified command with local, county and state partners. The vegetation in the Rice Creek drainage has not had any significant fire activity since the 1910 burn allowing a large buildup of fuels. If the fire growth was generally to the south, the community of Seeley Lake could be threatened with large scale evacuations and multiple values at risk. In addition to the resources listed in MAP 1 an additional six Type 1 Handcrews, six Type 2 IA Handcrews, ten Type 6 engines, 20+ Type two structural engines, one Type 3 helicopters, and four Type one helicopters, four Type 2 dozers, 50 supervision overhead, a Structural Protection Branch, a Law Enforcement Branch. The current Type 2 Incident Management Team team would have to complete a complexity analysis to evaluate if a higher level of Incident Management is indicated.



Morrell Complex
MT-LNF-000851
August 20, 2015

NAD 1983

- Legend**
- XXXXX Completed Dozer Line
 -  MAP 1
 -  MAP 2
 -  Uncontrolled Fire Edge

Management Action Points Map

W. Glesener
 8/20/2015
 12:00 Hours

