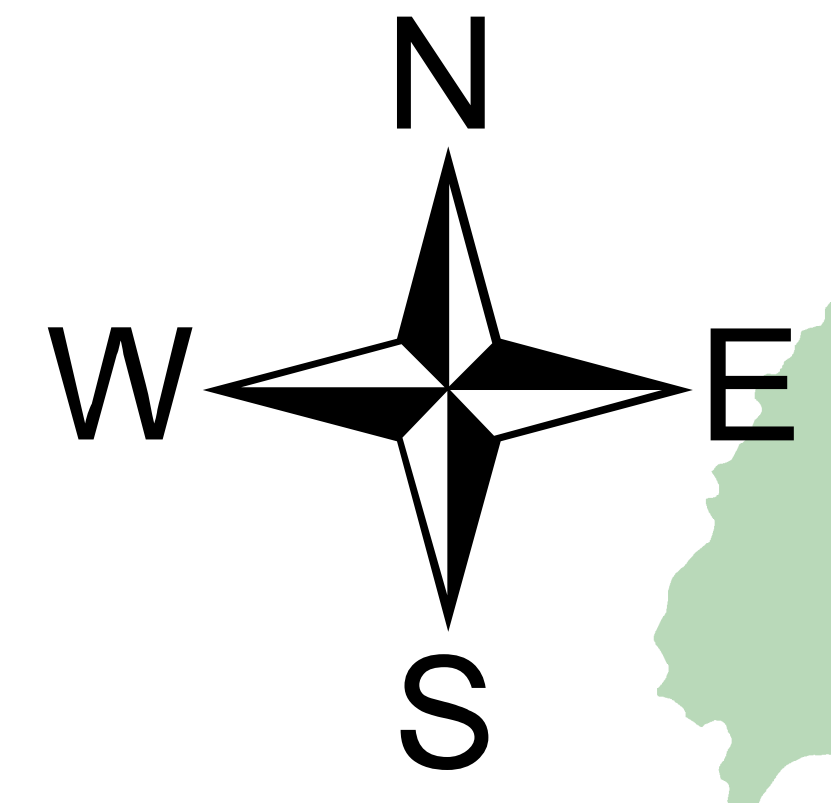


Monongahela NF Flooding 2016
 WV-MOF-160007
 NAD83 Datum Zone 17
 June 30, 2016 -Evening Shift



FS Roads needing Assessed as of
 06/30/2016 @ 1800 -- 369 Miles

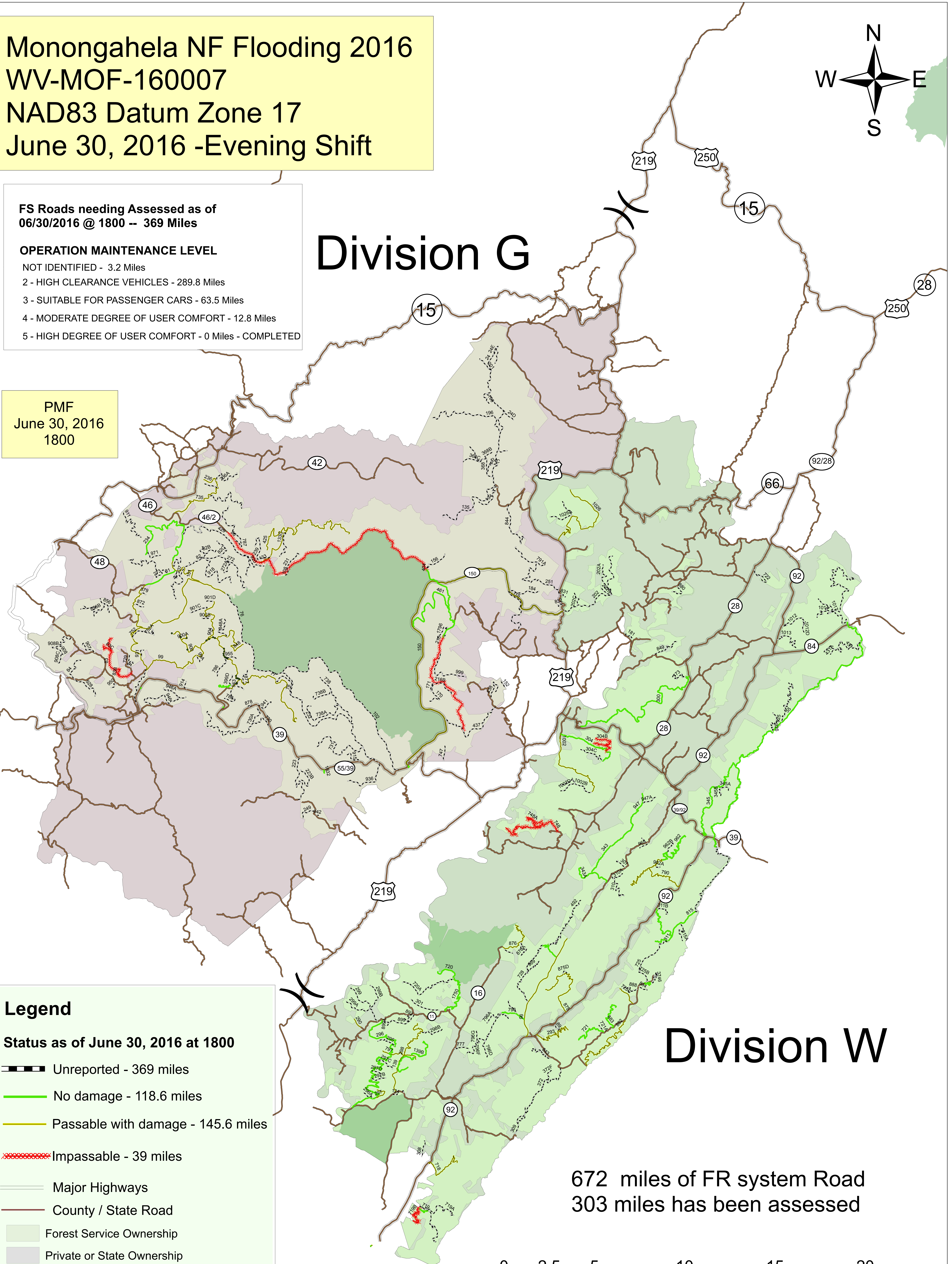
OPERATION MAINTENANCE LEVEL

- NOT IDENTIFIED - 3.2 Miles
- 2 - HIGH CLEARANCE VEHICLES - 289.8 Miles
- 3 - SUITABLE FOR PASSENGER CARS - 63.5 Miles
- 4 - MODERATE DEGREE OF USER COMFORT - 12.8 Miles
- 5 - HIGH DEGREE OF USER COMFORT - 0 Miles - COMPLETED

PMF
 June 30, 2016
 1800

Division G

Division W



Legend

Status as of June 30, 2016 at 1800

- Unreported - 369 miles
- No damage - 118.6 miles
- Passable with damage - 145.6 miles
- Impassable - 39 miles
- Major Highways
- County / State Road
- Forest Service Ownership
- Private or State Ownership
- Wilderness Area

672 miles of FR system Road
 303 miles has been assessed

