

United States Department of Agriculture  
Forest Service  
West Virginia  
America's Great Outdoors  
March 31, 2015

Motor Vehicle Use Map  
Monongahela National Forest  
Gaulley Ranger District

**PURPOSE AND CONTENTS OF THIS MAP**

The designations shown on this motor vehicle use map (MVUM) were made by the responsible official pursuant to 36 CFR 212.51; are effective as of the date on the front cover of this MVUM; and will remain in effect until superseded by next year's MVUM.

*Chad Thompson*  
Forest Supervisor, Monongahela National Forest

It is the responsibility of the user to acquire the current MVUM. This MVUM shows the National Forest System roads, National Forest System trails, and the areas on National Forest System lands in the Gaulley Ranger District that are designated for motor vehicle use pursuant to 36 CFR 212.51. This MVUM also identifies the vehicle classes allowed on each route and in each area, and any seasonal restrictions that apply on those routes and in those areas.

Designation of a road, trail, or area for motor vehicle use by a particular class of vehicle under 36 CFR 212.51 should not be interpreted as encouraging or inviting use or implying that the road, trail, or area is passable, actively maintained, or safe for travel. Motor vehicle designations include parking along designated routes and at facilities associated with designated routes when it is safe to do so and when not causing damage to National Forest System resources. Seasonal weather conditions and natural events may render designated roads and trails impassable for extended periods. Designated areas may contain dangerous or impassable terrain. Many designated roads and trails may be passable only by high-clearance vehicles or four-wheel-drive vehicles. Maintenance of designated roads and trails will depend on available resources, and many may receive little maintenance.

This motor vehicle use map identifies those roads, trails, and areas designated for the motor vehicle use under 36 CFR 212.51 for the purpose of enforcing the prohibition at 36 CFR 261.13. This is a limited purpose. The other public roads are shown for information and navigation purposes only and are not subject to designation under the Forest Service travel management regulation.

These designations apply only to National Forest System roads, National Forest System trails, and areas on National Forest System lands.

**PROHIBITIONS**  
It is prohibited to possess or operate a motor vehicle on National Forest System lands on the Monongahela National Forest other than in accordance with these designations (36 CFR 261.13).

Violators of 36 CFR 261.13 are subject to a fine of up to \$5,000, imprisonment for up to 6 months or both (18 U.S.C. 3571(i)). This prohibition applies regardless of the presence or absence of signs.

This map does not display nonmotorized uses, over-snow uses, or other facilities and attractions on the Monongahela National Forest. Obtain forest visitor information from the local national forest office.

Designated roads, trails, and areas may also be subject to temporary, emergency closures. As a visitor, you must comply with signs notifying you of such restrictions. A national forest may issue an order to close a road, trail, or area on a temporary basis to protect the life, health, or safety of forest visitors or the natural or cultural resources in these areas. Such temporary and/or emergency closures are consistent with the Travel Management Rule (36 CFR 212.52 (b), 36 CFR 261 subpart B).

The designation "road or trail open to all motor vehicles" does not supersede State traffic law.

**OPERATOR RESPONSIBILITIES**

Operating a motor vehicle on National Forest System roads, National Forest System trails, and in areas on National Forest System lands carries a greater responsibility than operating that vehicle in a city or other developed setting. Not only must you know and follow all applicable traffic laws, you need to show concern for the environment as well as other forest users. The misuse of motor vehicles can lead to the temporary or permanent closure of any designated road, trail, or area. As a motor vehicle operator, you are subject to State traffic law, including State requirements for licensing, registration, and operation of the vehicle in question.

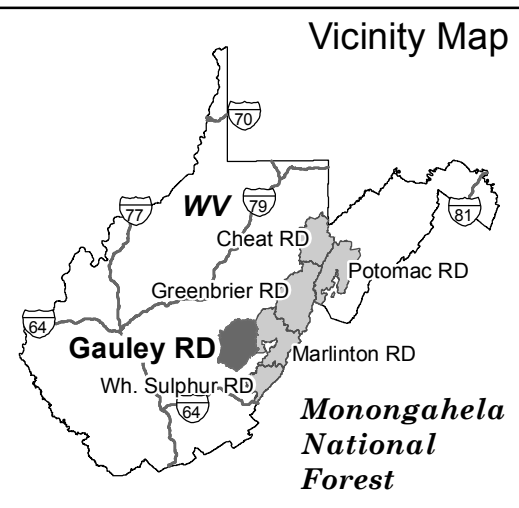
Motor vehicle use, especially off-highway vehicle use, involves inherent risks that may cause property damage, serious injury, and possibly death to participants. Drive cautiously and anticipate rough surfaces and features, such as snow, mud, vegetation, and water crossings common to remote driving conditions. By your participation, you voluntarily assume full responsibility for these damages, risks, and dangers. Take care at all times to protect yourself and those under your responsibility.

Much of the Monongahela National Forest is remote. Medical assistance may not be readily available. Cellular telephones do not work in many areas of the Monongahela National Forest. Take adequate food, water, first-aid supplies, and other equipment appropriate for the conditions and expected weather.

**ALWAYS REMEMBER TO RESPECT PRIVATE LAND! PROTECT YOUR PRIVILEGE. STAY ON DESIGNATED ROADS, TRAILS AND IN DESIGNATED AREAS.**

Read and understand this map in its entirety. If you have questions, please contact the Monongahela National Forest for clarification.

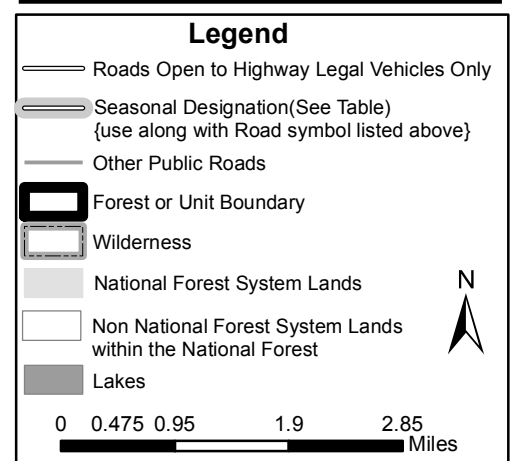
As a motor vehicle operator on a National Forest System road, trail, or area, you must comply with this map, as well as all Federal, State, and local laws and regulations.



Forest Supervisor's Office  
200 Sycamore St.  
Elkins, WV 26241  
Phone: 304-636-1800

Gaulley Ranger District  
932 N. Fork Cherry Rd.  
Richwood, WV 26261  
Phone: 304-846-2695

http://www.fs.usda.gov/mvf  
IN CASE OF EMERGENCY DIAL 911



**EXPLANATION OF LEGEND ITEMS**

Roads Open to Highway Legal Vehicles Only:

These roads are open only to motor vehicles licensed under State law for general operation on all public roads within the State.

Seasonal Designation:

This symbol, used in conjunction with one of the other road or trail symbols, indicates that the road or trail is open only during certain portions of the year. Refer to Seasonal and Special Designation Table for further instructions.

Other Public Roads and Trails:

- Highways, U.S.
- Highways, State
- Other Public Roads

These symbols are used to show routes that the Forest Service does have no jurisdiction over and has not designated for motorized use. These symbols are part of the reference layers showing connections to towns and cities outside the forest boundary.



Travel and Recreate with minimum impact

Respect the environment and the rights of others

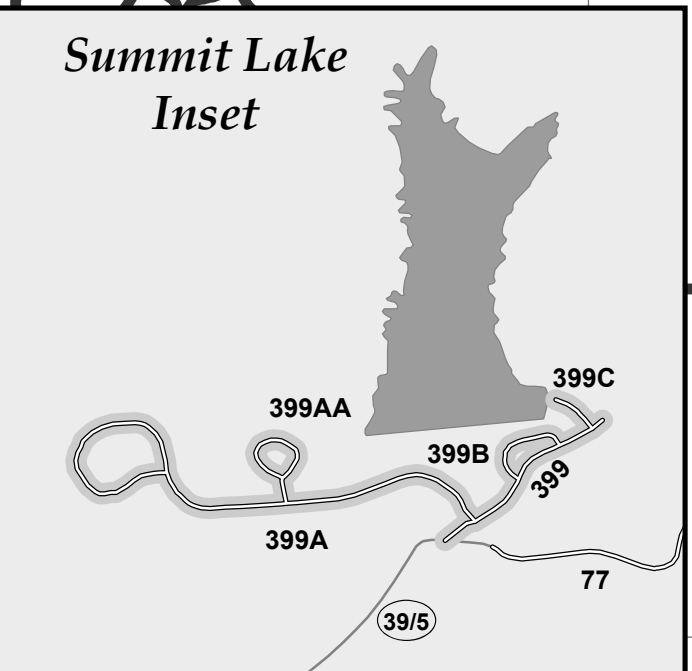
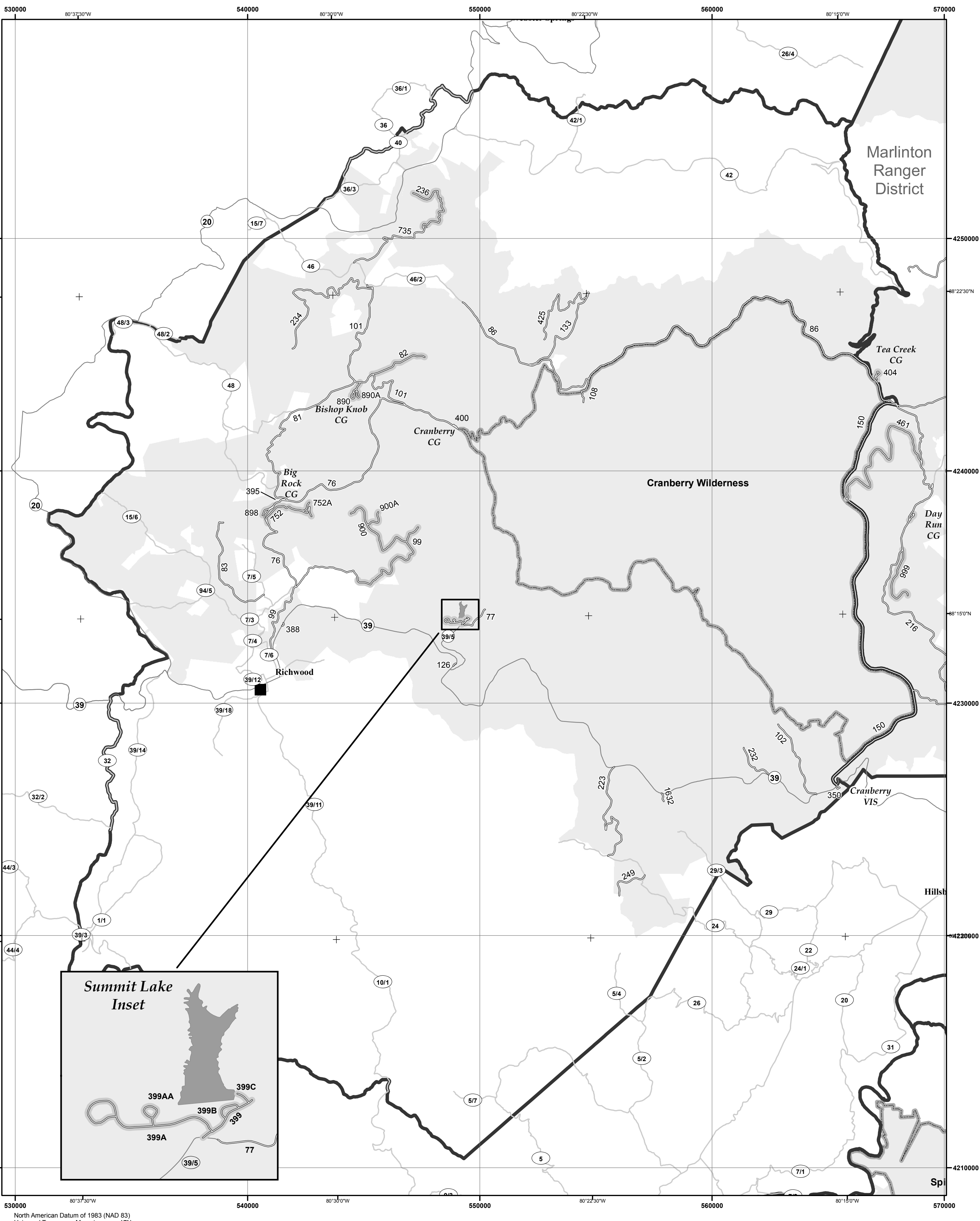
Educate yourself plan and prepare before you go

Allow for future use of the outdoors by leaving it better than you found it

Discover the rewards of responsible recreation

For more information on TREAD LIGHTLY! go to www.treadlightly.org or call 1-800-966-9900

The U.S. Department of Agriculture (USDA) prohibits discrimination in all its programs and activities on the basis of race, color, national origin, age, disability, and where applicable, sex, marital status, familial status, parental status, religion, sexual orientation, genetic information, political beliefs, reprisal, or because all or part of an individual's income is derived from any public assistance program. (Not all prohibited bases apply to all programs.) Persons with disabilities who require alternative means for communication of program information (braille, large print, audiotape, etc.) should contact USDA's TARGET Center at (202) 720-2600 (voice and TDD). To file a complaint of discrimination, write to USDA, Director, Office of Civil Rights, 1400 Independence Avenue, S.W., Washington, D.C. 20250-9410, or call (800) 795-3272 (voice) or (202) 720-6362 (TDD). USDA is an equal opportunity provider and employer.



**Seasonal and Special Vehicle Designations**

Route Number	Legend	Special Vehicle Designation	Dates Allowed	Beginning Mile Post	Ending Mile Post
82	[Symbol]	Roads open to highway legal vehicles only, with Seasonal Designation	Seasonal Designation	08/15-04/15	0.000 2.400
99	[Symbol]	Roads open to highway legal vehicles only, with Seasonal Designation	Seasonal Designation	10/15-12/31	2.008 4.300
126	[Symbol]	Roads open to highway legal vehicles only, with Seasonal Designation	Seasonal Designation	04/15-10/15	0.000 0.150
236	[Symbol]	Roads open to highway legal vehicles only, with Seasonal Designation	Seasonal Designation	10/15-12/31	0.000 2.430
395	[Symbol]	Roads open to highway legal vehicles only, with Seasonal Designation	Seasonal Designation	04/01-11/30	0.000 0.090
399	[Symbol]	Roads open to highway legal vehicles only, with Seasonal Designation	Seasonal Designation	04/01-11/30	0.000 0.240
399A	[Symbol]	Roads open to highway legal vehicles only, with Seasonal Designation	Seasonal Designation	04/01-11/30	0.000 0.740
399AA	[Symbol]	Roads open to highway legal vehicles only, with Seasonal Designation	Seasonal Designation	04/01-11/30	0.000 0.180
399B	[Symbol]	Roads open to highway legal vehicles only, with Seasonal Designation	Seasonal Designation	04/01-11/30	0.000 0.110
399C	[Symbol]	Roads open to highway legal vehicles only, with Seasonal Designation	Seasonal Designation	04/01-11/30	0.000 0.050
400	[Symbol]	Roads open to highway legal vehicles only, with Seasonal Designation	Seasonal Designation	04/01-11/30	0.000 0.459
461	[Symbol]	Roads open to highway legal vehicles only, with Seasonal Designation	Seasonal Designation	06/01-07/15, 11/22-12/31	0.000 3.600
752	[Symbol]	Roads open to highway legal vehicles only, with Seasonal Designation	Seasonal Designation	10/15-12/31	0.000 2.200
752A	[Symbol]	Roads open to highway legal vehicles only, with Seasonal Designation	Seasonal Designation	10/15-12/31	0.000 0.430
890	[Symbol]	Roads open to highway legal vehicles only, with Seasonal Designation	Seasonal Designation	04/01-11/30	0.000 0.750
890A	[Symbol]	Roads open to highway legal vehicles only, with Seasonal Designation	Seasonal Designation	04/01-11/30	0.000 0.460
898	[Symbol]	Roads open to highway legal vehicles only, with Seasonal Designation	Seasonal Designation	04/15-10/15	0.000 0.452
900	[Symbol]	Roads open to highway legal vehicles only, with Seasonal Designation	Seasonal Designation	10/08-12/15	0.000 2.900
900A	[Symbol]	Roads open to highway legal vehicles only, with Seasonal Designation	Seasonal Designation	10/08-12/15	0.000 0.620
1101	[Symbol]	Roads open to highway legal vehicles only, with Seasonal Designation	Seasonal Designation	01/01-12/31	0.000 0.295