

# INCIDENT ACTION PLAN

## STEEP VALLEY FIRE

WV-NRP-000763 PP QRK1 (1523)

### Common Denominators of Fire Behavior On Tragedy Fires

These common denominators have been identified through studies of tragedy fires. It is important for firefighters to readily recognize them to prevent future tragedies.

Such fires often occur:

1. On relatively small fires or deceptively quiet areas of large fires.
2. In relatively light fuels, such as grass, herbs, and light brush.
3. When there is an unexpected shift in wind direction or in wind speed.
4. When fire responds to topographic conditions and runs uphill.
5. Critical burn period between 1400 and 1700.

Alignment of topography and wind during the critical burning period should be considered a trigger point to reevaluate tactics.

A tactical pause may be prudent around 1400 for reevaluating your situational awareness.

Tuesday, November 14, 2023  
0700 to 1900

Tom Fielden, IC  
Nate Orsburn, IC(t)



IAPs, Maps, Remote Check-in



Submit Your Fireline Photos Here

## INCIDENT OBJECTIVES (ICS 202)

<b>1. Incident Name:</b>	<b>2. Operational Period:</b>	
STEEP VALLEY	Date/Time From: 11/14/2023 0700      TUE	Date/Time To: 11/14/2023 1900      TUE
<b>3. Objective(s):</b>		
<p><b>Strategic Objectives</b></p> <ul style="list-style-type: none"> <li>• Protect human life, structures, and facilities and natural and cultural resources inside and outside the park. Firefighter and public safety is the first priority in every decision.</li> <li>• Minimize damage to the park's natural and cultural resources by using minimum impact suppression techniques (MIST).</li> </ul> <p><b>Tactical objectives</b></p> <ul style="list-style-type: none"> <li>• Keep the fire north and east of the New River, south of County Road 41, and west of the communities of Layland Heights and Meadow Creek.</li> </ul>		
<b>4. Operational Period Command Emphasis:</b>		
With dry conditions over the fire and terrain influenced winds, anticipate rapid changes in fire behavior and respond accordingly. Maintain the good hard work that all of you have put in to keep this fire within our established lines.		
<b>General Situational Awareness:</b>		
<ul style="list-style-type: none"> <li>• Use natural fire breaks or leaf blowers and wet lines wherever possible (in lieu of handline construction). Water bars will be constructed into hand lines on steep slopes.</li> <li>• Use mop-up kits and other low-pressure nozzles setting to prevent erosion.</li> <li>• Firelines kept to the minimum width needed to allow for backfiring, burnout, or the creation of a safe blackline.</li> <li>• Minimal tree felling. Snags within or adjacent to firelines will be removed only if the show evidence of fire, present hazard to firefighters, or constitute a legitimate threat to the fireline. Living trees will be undisturbed whenever possible. Lower branches will be pruned whenever possible to remove ladder fuels rather than removing the tree.</li> </ul>		
<b>5. Site Safety Plan Required?</b> Yes <input type="checkbox"/> No <input checked="" type="checkbox"/>		
<b>Approved Site Safety Plan(s) Located</b>		
<b>6. Incident Action Plan</b> (the items checked below are included in this Incident Action Plan):		
<input checked="" type="checkbox"/> ICS 202 <input checked="" type="checkbox"/> ICS 203 <input checked="" type="checkbox"/> ICS 204 <input checked="" type="checkbox"/> ICS 205 <input checked="" type="checkbox"/> ICS 205A <input checked="" type="checkbox"/> ICS 206	<input type="checkbox"/> ICS 207 <input checked="" type="checkbox"/> ICS 208 <input checked="" type="checkbox"/> ICS 220 <input checked="" type="checkbox"/> Map/Chart <input checked="" type="checkbox"/> Weather Forecast/Tides/Currents	<b>Other Attachments:</b> <input type="checkbox"/> _____ <input type="checkbox"/> _____ <input type="checkbox"/> _____ <input type="checkbox"/> _____
<b>7. Prepared by:</b> TOMAS LIOGYS	<b>Position/Title:</b> PSCC	<b>Signature:</b>
<b>8. Approved by Incident Commander:</b>	<b>Name:</b> TOM FIELDEN	<b>Signature:</b>
<b>ICS 202</b>	<b>IAP Page</b>	<b>Date/Time:</b> 11/13/2023 2100

## ORGANIZATION ASSIGNMENT LIST (ICS 203)

<b>1. Incident Name:</b>		<b>2. Operational Period:</b>	
STEEP VALLEY		Date/Time From: 11/14/2023 0700	TUE
		Date/Time To: 11/14/2023 1900	TUE
<b>3. Incident Commander(s) and Command Staff:</b>			COMPENSATION UNIT
IC/UC	TOM FIELDEN NATE ORSBURN (T)		COST UNIT
SAFETY OFFICER	JOHN NICKEY		
INFORMATION OFFICER	TOM ENGBERG LORENE HYNES (T)		
LIAISON OFFICER	STAN WILSON (T)		
<b>4. Agency/Organization Representative(s):</b>			
Agency/Organization	Name		
NPS	CHARLES SELLARS		
NPS	ERIC LAPRICE		
NPS DUTY OFFICER	SASHA ERNST		
<b>5. Planning Section:</b>			
CHIEF	TOMAS LIOGYS		
SITUATION UNIT			
GIS SPECIALIST	MICHELLE FAHERTY		
RESOURCES UNIT			
AIR RESOURCE ADVISOR	THOMAS PIERCE		
<b>6. Logistics Section:</b>			
CHIEF	SCOTT EDWARDS		
BASE CAMP MANAGER	NICHOLAS VINEZ		
MEDICAL UNIT	KATHERINE ZERKLE		
SECURITY UNIT	JASON DEMERS		
SUPPLY UNIT			
FACILITIES UNIT			
<b>7. Operations Section:</b>			
OPS SECTION CHIEF			
STAGING AREA			
DIVISION/GROUP	A/B		
DIVISION/GROUP	B		
DIVISION/GROUP	D		
DIVISION/GROUP	V		
DIVISION/GROUP	Y	CHRISOPHER MOORE O-19 MATT WATSON O-11 (T)	
<b>7b. Air Operations Branch:</b>			
HELIBASE MANAGER	TIM SCHERM		
<b>8. Finance/Administration Section:</b>			
CHIEF	STACEY SNUFFER		
TIME UNIT			
PROCUREMENT UNIT			
<b>9. Prepared By:</b>		<b>Signature:</b>	
Name:	TOMAS LIOGYS	Position/Title:	PSCC
ICS 203	IAP Page	Date/Time:	11/13/2023 2100

**FORECAST NO. 7**

**Name of Incident: Steep Valley Fire**  
**Unit: New River Gorge National Park & Preserve**

**Prediction for: Tuesday, November 14, 2023**  
**Forecast Issued: 2000 November 13, 2023**

**FIRE WEATHER AND BEHAVIOR**

**DISCUSSION:** RH values will recover into the lower 80s through early Tuesday morning. Then, expect minimum RH values in the upper 20s and lower 30s from 1200 PM to 500 PM Tuesday. RH values will only recover into the upper 50s by Tuesday night, topping out at 58 percent by sunrise Wednesday. RH values will then fall into the middle to lower 30s by 1100 AM Wednesday, lasting through around 500 PM.

Expect winds from the northwest at around 5-9 mph overnight. Winds will remain from the northwest at around 5-8 mph Tuesday. Winds are expected to relax Tuesday night, and will shift to become southeasterly Wednesday at 5-8 mph.

The next decent chance for measurable rainfall will be with a cold front on Friday. Around 0.50" of rain will be possible.

**TUESDAY 11/14/2023**

Sunny.

MAXIMUM TEMPERATURE: 55  
MINIMUM RH: 29%  
WINDS NW 5-7.

**TUESDAY NIGHT**

Partly cloudy then becoming mostly cloudy.

MINIMUM TEMPERATURE 35  
MAXIMUM RH: 58%  
WINDS Light winds becoming SE 5-7.

**WEDNESDAY 11/15/2023**

Partly sunny.

MAXIMUM TEMPERATURE 61  
MINIMUM RH: 30%  
WINDS SE 5-7.

**3-7 Day Outlook**

	Thu Nov 16	Fri Nov 17	Sat Nov 18	Sun Nov 19	Mon Nov 20
Max T	65	61	52	52	52
Min T	37	48	38	33	38
Max RH	70	90	88	75	69
Min RH	33	68	54	44	58
Wind	SW 3-9 G16	S 8 G15	NW 7-13 G21	WNW 6-9 G14	SE 6-16 G23
POP	8	75	58	4	40

**FIRE BEHAVIOR**

With another good drying day yesterday, expect fire activity to begin at least as early as yesterday. Fire behavior should be similar to yesterday. The northwesterly winds may become more westerly through the river corridor increasing rates of spread and flame lengths.

# Fuels and Fire Behavior Advisory

## Southern Appalachian Mountains and Piedmont

Effective November 13, 2023

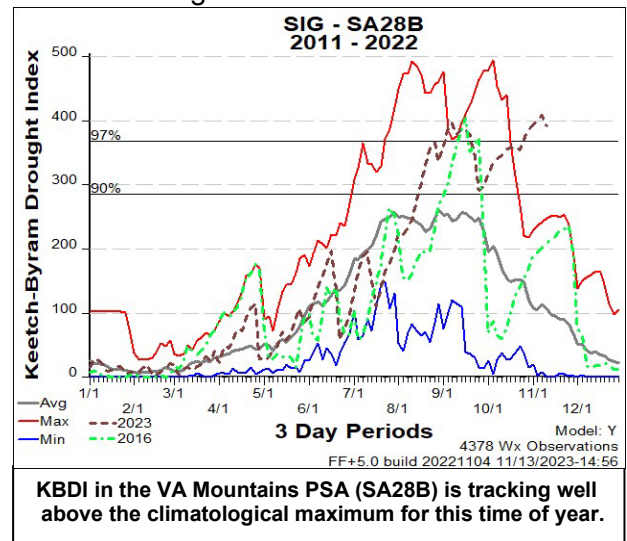
**Subject:** Increased fire danger in the hardwood-dominant Southern Appalachians due to ongoing drought

**Discussion:** Severe to exceptional drought has expanded across the Southern Appalachians and portions of the Piedmont in recent weeks, while seasonal leaf off continues to progress down from the higher elevations. The availability of fresh leaf litter and extremely dry duff layers on the surface are both contributing to difficulties controlling and containing ongoing wildfires. Recent light rain has only temporarily reduced fire danger. Long-term rainfall deficits combined with another period of abnormally dry air and poor overnight recoveries will result in critically low dead fuel moisture and a sharp increase in risk. Conditions within and adjacent to the advisory may degrade further if soaking rainfall does not return in the next one to two weeks, but confidence in weather conditions is lower than normal beyond the 5-day period.

**Difference from normal conditions:** Fire danger indices across the advisory area have increased to levels that are locally on par with conditions in the fall of 2016. Owing to 30-, 60- and 90-day rainfall deficits well below 25% of normal, 100- and 1000-hour fuels are critically dry, resulting in extensive mop-up operations. Additionally, multiple fires have remained active through the overnight hours as a result of the drought-impacted duff layer burning readily and holding heat. The energy release component (ERC) in several Predictive Service Areas (PSAs) recently surpassed historic levels observed in the fall of 2016, while KBDIs are tracking near the climatological maximum in portions of the area (as shown below). Fuels that normally burn during the spring fire season, such as Mountain Laurel and Rhododendron, are actively burning and contributing to fire spread. Active torching in young pine has also been observed under moderate burning conditions.

**Concerns to Firefighters and the Public:** Any fire in this area may be resistant to control efforts. Expect:

- a high probability for ignitions and spotting in *extremely dry* down and dead fuels;
  - elevated or higher fire line intensity during both initial attack and extended attack;
  - holding issues on handlines and the need for extended mop-up - freshly fallen leaves may need to be blown off containment lines regularly where leaf off has not reached completion;
  - higher than normal fire intensities in areas of complex terrain, which may preclude direct attack of fires;
  - the risk for fires to encroach on the wildland-urban interface, which has grown substantially since 2016;
  - extreme fire behavior and rates of spread if terrain-enhanced wind events, extended periods of low RH or other critical fire weather patterns materialize.
- See the Southern Area Fall [Risk Assessment](#) for an overview of critical fire weather patterns in the region, which may include dry cold fronts, distant tropical cyclones and [mountain waves](#).



### Mitigation Measures:

- Do not expect any fire to be routine.
- Fire managers should be prepared to support periods of increasing fire occurrence, as well as complex, potentially long-duration incidents.
- Utilize indirect tactics and plan for extended mop-up, with periodic patrolling of control lines.
- Utilize aerial supervision to help direct crews and keep them informed on fire behavior.
- Ensure adequate daily briefings for initial attack resources, especially if critical fire weather is forecast.
- Make sure that LCES is in place before engaging on any fire. Remember to STOP, THINK and TALK before you ACT.

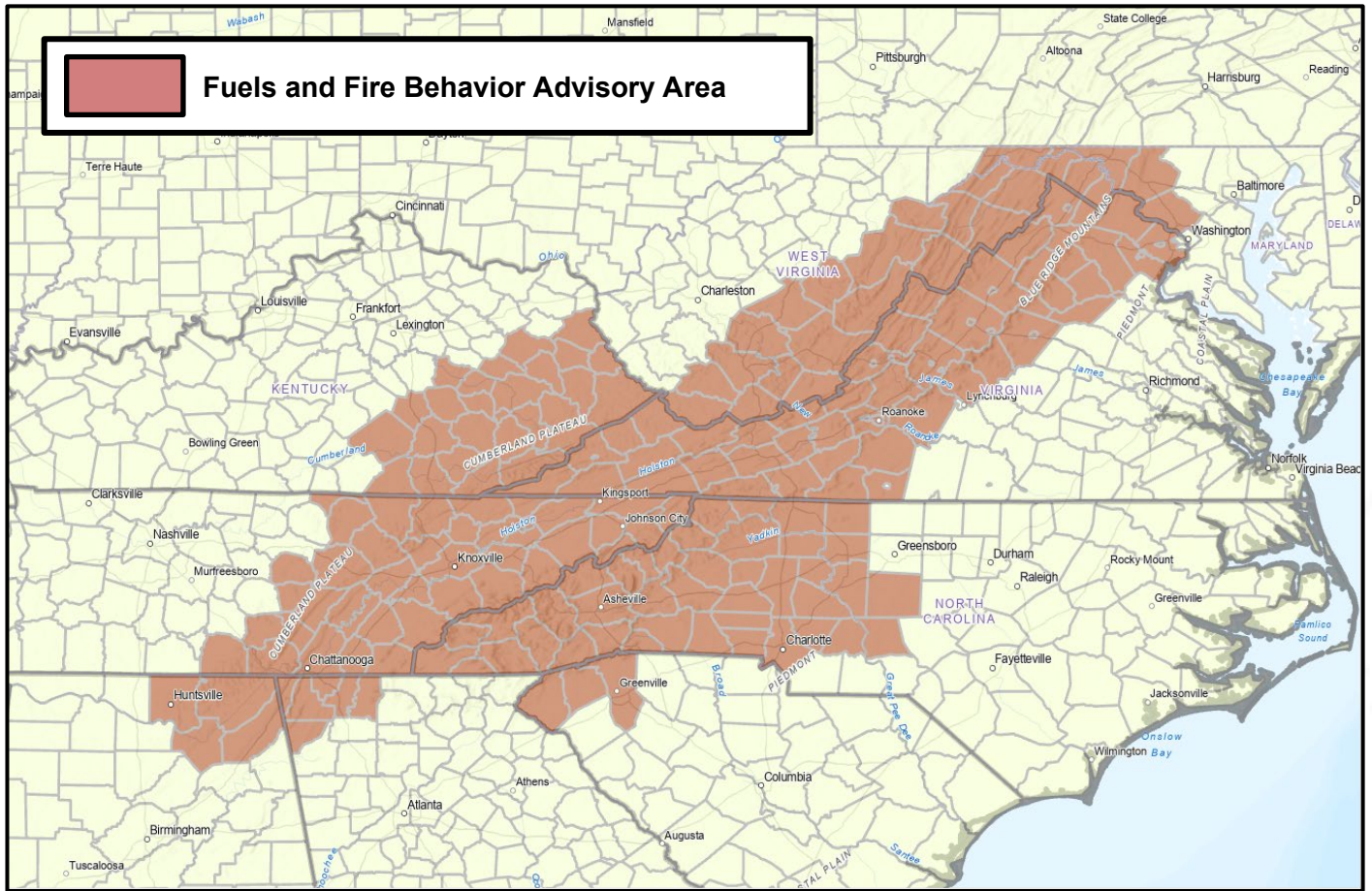
**Issued By:** Southern and Eastern Area Predictive Services in coordination with state and federal partners.



# Fuels and Fire Behavior Advisory

## Southern Appalachian Mountains and Piedmont

Effective November 13, 2023



Fresh leaf litter is contributing to fire spread under Rhododendron on the Collett Ridge Fire in North Carolina (left, National Forests of NC). Fires have been actively burning throughout the overnight hours in portions of the Appalachians (right, VA Department of Forestry).

**Division/Group Assignment List (ICS 204 WF)**  
**Controlled Unclassified Information//Basic**

<b>1. Incident Name:</b>			<b>3.</b>			
STEEP VALLEY			<b>Branch:</b>		<b>Division/Group</b>	
<b>2. Operational Period:</b>					<b>A/B</b>	
Date/Time From: 11/14/2023 0700 TUE		Date/Time To: 11/14/2023 1900 TUE				
<b>4. Operations Personnel</b>						
<b>OPERATIONS CHIEF</b>			<b>DIVISION/GROUP SUPERVISOR</b>			
<b>5. Resources Assigned this Period</b>						
Strike Team / Task Force / Resource Designator		LWD	Leader	Number Persons	Drop Off PT./Time	Pick Up PT./Time
TFLD AUZA O-3		11/22	FRANK AUZA	1		
TFLD(T) DENNIS-GAST O-28		11/19	DEREK DENNIS-GAST	1		
ENG6 WOLF CREEK E-6		11/23	KEN SPACHT	3		
ENG6 ATLANTIC WILDFIRE E-11		11/25	GARY HALL-MASON	2		
ENG6 WV-NRP E-602*		11/25	SAMUEL LONG	3		
EMPF KWIECIEN O-41		11/25	JEFF KWIECIEN	1		
<b>6. Control Operations/Work Assignments:</b>						
<p>Hold and improve fire line  Mitigate snags along roadway  Seize opportunities for backfiring upon written approval.  *Denotes Initial Attack (IA) resource.</p>						
<b>7. Special Instructions:</b>						
<ul style="list-style-type: none"> <li>• Maintain situational awareness.</li> <li>• Take appropriate mitigation measures on steep terrain, snags, and while working along the river.</li> <li>• Identify and mark any mines.</li> <li>• Hunters may be in the area.</li> </ul> <p>SOFR Nickey is available across all divisions.  EMPF Kwiecien EMTF Place are assigned to divisions but available across all divisions.</p>						
<b>8. Division/Group Communication Summary</b>						
Function	Channel	RX Frequency N/W	RX Tone/NAC	TX Frequency N/W	TX Tone/NAC	Mode
COMMAND	NPS FIRE					MOTOROLA
TACTICAL	NIFC TAC 1	168.6000	107.2	168.6000	107.2	A
MEDICAL	NPS GEN					MOTOROLA
AIR TO GROUND		166.6125		166.6125		A
<b>9. Prepared By (Resource Unit Leader)</b>			<b>Approved By (Planning Section Chief)</b>		<b>Date</b>	<b>Time</b>
TOMAS LIOGYS			TOMAS LIOGYS		11/13/2023	2100

**Division/Group Assignment List (ICS 204 WF)**  
**Controlled Unclassified Information//Basic**

<b>1. Incident Name:</b>				<b>3.</b>			
STEEP VALLEY				<b>Branch:</b>		<b>Division/Group</b>  <b>D</b>	
<b>2. Operational Period:</b>							
Date/Time From: 11/14/2023 0700      TUE		Date/Time To: 11/14/2023 1900      TUE					
<b>4. Operations Personnel</b>							
<b>OPERATIONS CHIEF</b>			<b>BRANCH DIRECTOR</b>				
<b>DIVISION/GROUP SUPERVISOR</b>			<b>AIR ATTACK SUPERVISOR</b>				
<b>5. Resources Assigned this Period</b>							
Strike Team / Task Force / Resource Designator		LWD	Leader	Number Persons	Drop Off PT./Time	Pick Up PT./Time	
UNSTAFFED							
<b>6. Control Operations/Work Assignments:</b>							
<b>7. Special Instructions:</b>							
<b>8. Division/Group Communication Summary</b>							
Function	Channel	RX Frequency N/W	RX Tone/NAC	TX Frequency N/W	TX Tone/NAC	Mode	
COMMAND							
TACTICAL							
LOGISTICS							
AIR TO GROUND							
<b>9. Prepared By (Resource Unit Leader)</b>			<b>Approved By (Planning Section Chief)</b>			<b>Date</b>	<b>Time</b>
TOMAS LIOGYS			TOMAS LIOGYS			11/13/2023	2100



## Division/Group Assignment List (ICS 204 WF)

Controlled Unclassified Information//Basic

<b>1. Incident Name:</b>			<b>3.</b>			
STEEP VALLEY			<b>Branch:</b>	<b>Division/Group</b>  <b>V</b>		
<b>2. Operational Period:</b>						
Date/Time From:	TUE	Date/Time To:	TUE			
11/14/2023 0700		11/14/2023 1900				
<b>4. Operations Personnel</b>						
<b>OPERATIONS CHIEF</b>		<b>BRANCH DIRECTOR</b>				
<b>DIVISION/GROUP SUPERVISOR</b>		<b>AIR ATTACK SUPERVISOR</b>				
<b>5. Resources Assigned this Period</b>						
Strike Team / Task Force / Resource Designator	LWD	Leader	Number Persons	Drop Off PT./Time	Pick Up PT./Time	
UNSTAFFED						
<b>6. Control Operations/Work Assignments:</b>						
<b>7. Special Instructions:</b>						
<b>8. Division/Group Communication Summary</b>						
Function	Channel	RX Frequency N/W	RX Tone/NAC	TX Frequency N/W	TX Tone/NAC	Mode
COMMAND						
TACTICAL						
LOGISTICS						
AIR TO GROUND						
<b>9. Prepared By (Resource Unit Leader)</b>		<b>Approved By (Planning Section Chief)</b>		<b>Date</b>	<b>Time</b>	
TOMAS LIOGYS		TOMAS LIOGYS		11/13/2023	2100	

## Division/Group Assignment List (ICS 204 WF)

Controlled Unclassified Information//Basic

<b>1. Incident Name:</b>			<b>3.</b>			
STEEP VALLEY			<b>Branch:</b>		<b>Division/Group</b>	
<b>2. Operational Period:</b>						
Date/Time From: 11/14/2023 0700 TUE		Date/Time To: 11/14/2023 1900 TUE		Y		
<b>4. Operations Personnel</b>						
<b>OPERATIONS CHIEF</b>				<b>BRANCH DIRECTOR</b>		
<b>DIVISION/GROUP SUPERVISOR</b>		CHRISTOPHER MOORE O-19 11/24 MATT WATSON O-11 11/22 (T)		<b>AIR ATTACK SUPERVISOR</b>		
<b>5. Resources Assigned this Period</b>						
Strike Team / Task Force / Resource Designator		LWD	Leader		Number Persons	Drop Off PT./Time
FIRB(T) DEPAULO O-27		11/19	NICHOLAS DEPAULO		1	
CR2I NORTH PACIFIC FORESTRY		11/24	JOSE PEREZ		20	
ENG6 MI-MIS HARRISON 56 E-4		11/22	BRIAN CARROLL		2	
ENG6 MI-MIS FELCH 56 E-5		11/22	SAM SALO		2	
ENG6 TIMBERLINE FIRE LLC E-12		11/25	JEROME ANTONIO		3	
FFT2 SMOOT O-9		11/21	KATHLEEN SMOOT		1	
FFT2 BISBEE		11/25	WESLEY BISBEE		1	
REAF MANNING O-31		11/19	DOUGLAS MANNING		1	
EMTF PLACE O-40		11/25	MARK PLACE		1	
<b>6. Control Operations/Work Assignments:</b>						
<p>Hold and improve fire line. Seize opportunities for backfiring upon written approval. Mitigate snags along line.</p>						
<b>7. Special Instructions:</b>						
<ul style="list-style-type: none"> <li>Maintain situational awareness.</li> <li>Take appropriate mitigation measures on steep terrain, snags, and while working along the river.</li> <li>Identify and mark any mines.</li> <li>Hunters may be in the area.</li> </ul> <p>SOFR Nickey is available across all divisions. EMPF Kwiecien EMTF Place are assigned to divisions but available across all divisions.</p>						
<b>8. Division/Group Communication Summary</b>						
Function	Channel	RX Frequency N/W	RX Tone/NAC	TX Frequency N/W	TX Tone/NAC	Mode
COMMAND	NPS FIRE					MOTOROLA
TACTICAL	NIFC TAC 4	166.7250	107.2	166.7250	107.2	A
MEDICAL	NPS GEN					MOTOROLA
AIR TO GROUND		166.6125		166.6125		A
<b>9. Prepared By (Resource Unit Leader)</b>			<b>Approved By (Planning Section Chief)</b>		<b>Date</b>	<b>Time</b>
TOMAS LIOGYS			TOMAS LIOGYS		11/13/2023	2100

## Division/Group Assignment List (ICS 204 WF)

Controlled Unclassified Information//Basic

<b>1. Incident Name:</b>			<b>3.</b>			
STEEP VALLEY			<b>Branch:</b>	<b>Division/Group</b>  <b>Y‡</b>		
<b>2. Operational Period:</b>						
Date/Time From:	TUE	Date/Time To:	11/14/2023 1900	TUE		
<b>4. Operations Personnel</b>						
<b>OPERATIONS CHIEF</b>			<b>BRANCH DIRECTOR</b>			
<b>DIVISION/GROUP SUPERVISOR</b>		CHRISTOPHER MOORE O-19 11/24 MATT WATSON O-11 11/22 (T)		<b>AIR ATTACK SUPERVISOR</b>		
<b>5. Resources Assigned this Period</b>						
Strike Team / Task Force / Resource Designator	LWD	Leader	Number Persons	Drop Off PT./Time	Pick Up PT./Time	
READ ZASTAWNY O-8‡	11/20	ABIGAL ZASTAWNY	1			
FFT2 MAYER O-10‡	11/22	DAN MAYER	1			
FFT2 MCQUEEN O-39‡	11/23	JAMES MCQUEEN	1			
<b>6. Control Operations/Work Assignments:</b>						
<p>Hold and improve fire line.                  Seize opportunities for backfiring upon written approval.                  Mitigate snags along line.</p>						
<b>7. Special Instructions:</b>						
<ul style="list-style-type: none"> <li>Maintain situational awareness.</li> <li>Take appropriate mitigation measures on steep terrain, snags, and while working along the river.</li> <li>Identify and mark any mines.</li> <li>Hunters may be in the area.</li> </ul> <p>SOFR Nickey is available across all divisions.                  EMPF Kwiecien EMTF Place are assigned to divisions but available across all divisions.</p> <p>‡These resources will construct handline in DIV V around private property in the Glade area with READ guidance and then return to the division upon completion.</p>						
<b>8. Division/Group Communication Summary</b>						
Function	Channel	RX Frequency N/W	RX Tone/NAC	TX Frequency N/W	TX Tone/NAC	Mode
COMMAND	NPS FIRE					MOTOROLA
TACTICAL	NIFC TAC 4	166.7250	107.2	166.7250	107.2	A
MEDICAL	NPS GEN					MOTOROLA
AIR TO GROUND		166.6125		166.6125		A
<b>9. Prepared By (Resource Unit Leader)</b>		<b>Approved By (Planning Section Chief)</b>		<b>Date</b>	<b>Time</b>	
TOMAS LIOGYS		TOMAS LIOGYS		11/13/2023	2100	

## AIR OPERATIONS SUMMARY (ICS 220)

<b>1. Incident Name:</b>		<b>2. Operational Period:</b> Date From: _____ Date To: _____ Time From: _____ Time To: _____				<b>3. Sunrise:</b> _____ <b>Sunset:</b> _____	
<b>4. Remarks</b> (safety notes, hazards, air operations special equipment, etc.):			<b>5. Ready Alert Aircraft:</b> Medivac: _____ New Incident: _____			<b>6. Temporary Flight Restriction Number:</b>	
			<b>8. Frequencies:</b>	AM	FM		
			Air/Air Fixed-Wing			Air Tactical Group Supervisor Aircraft:	
<b>7. Personnel:</b>	Name:	Phone Number:	Air/Air Rotary-Wing – Flight Following				
Air Operations Branch Director			Air/Ground				
			Air/Ground - Initial Attack				
Air Support Group Supervisor			Command			Other Fixed-Wing Aircraft:	
Air Tactical Group Supervisor			Deck Coordinator				
Helicopter Coordinator			Take-Off & Landing Coordinator				
Helibase Manager			Air Guard				
<b>10. Helicopters</b> (use additional sheets as necessary):							
FAA N#	Category/Kind/Type	Make/Model	Base	Available	Start	Remarks	
<b>11. Prepared by:</b> Name: _____ Position/Title: _____ Signature: _____							
ICS 220, Page 1			Date/Time: _____				

# INCIDENT RADIO COMMUNICATIONS PLAN (ICS 205)

Controlled Unclassified Information//Basic

<b>1. Incident Name:</b>	<b>2. Date/Time Prepared:</b>	<b>3. Operational Period:</b>	
STEEP VALLEY	Date: 11/13/2023 Time: 2100	Date/Time From: 11/14/2023 0700 TUE	Date/Time To: 11/14/2023 1900 TUE

**4. Basic Radio Channel Use:**

Zone Group	Ch #	Function	Channel Name/Trunked Radio System Talkgroup	Assignment	RX Freq	RX Tone/NAC	TX Freq	TX Tone/NAC	Mode (A,D, or M)	Remarks
	1	TACTICAL	NIFC TAC 1	DIV A/B	168.0500	107.2	168.0500	107.2	A	
	2	TACTICAL	NIFC TAC 3		168.6000	107.2	168.6000	107.2	A	
	3	TACTICAL	NIFC TAC 4	DIV Y	166.7250	107.2	166.7250	107.2	A	
	4	TACTICAL	NIFC TAC 5		166.7750	107.2	166.7750	107.2		
	5	AIR TO GROUND	AIR TO GROUND		166.6125		166.6125		A	
	6	AIR GUARD	AIR GUARD		168.6250		168.6250	110.9		

**5. Special Instructions:**

<b>6. Prepared By</b> (Communications Unit Leader)	Name: TOMAS LIOGYS	Signature:
ICS 205	IAP Page	Date/Time: 11/13/2023 2100



## Steep Valley Fire Contact List

Position	Name	Phone
Incident Commander	Tom Fielden	304-640-8813
Incident Commander(t)	Nate Orsburn	219-871-9959
Helicopter Manager	Tim Scherm	304-642-6221
Fire Information (General Public)		304-809-9875
Public Information	Thomas Engberg	740-703-4682
Public Information(t)	Lorene Hynes	304-719-5785
Logistics	Scott Edwards	440-552-4644
Finance	Stacey Snuffer	304-877-1307
Plans	Tomas Liogys	862-236-2926

---

### FINANCE MESSAGE

Please email your completed, signed, legible CTR's to

[2023.steepvalley.finance@firenet.gov](mailto:2023.steepvalley.finance@firenet.gov)

or

text it to

304-877-1307

---

### PLANS MESSAGE

**ALL** resources must check in!!!

Use the QR Code on the front cover to access the remote check-in  
If you don't check in, Finance can't post your time

TO DEMOB

Before you leave – see Finance first to make sure all your pay  
paperwork is signed, complete, and in order

Once you are done with finance, call Plans at 862-236-2926

# Steep Valley Fire Resource Management Message

Please note the following

## **Portable Pump Operations**

If water pumping is going to occur, the river access ramps/areas by Army Camp, McCreery, Grandview Sandbar, Mill Creek, and Glade Creek are preferable given their already high level of disturbance and lack of mussel populations.

## **Helicopter Dip-Sites**

Given the high density and relatively high diversity of freshwater mussels, I recommend avoiding the following areas if it is likely that collecting water will disturb the river bottom (like a large bucket being dropped in to collect water and hitting the bottom).

- **Within 500 feet upstream and downstream of the Meadow Creek Access**

**37.796190254815265, -80.92180396361326**

- **Within 1 mile upstream of the Thayer River Access**

**37.902234791674346, -81.03236768934798**

- **Between the old bridge piers upstream of Glade Creek**

**37.83107396792361, -81.00247618981163**

**and approximately 1 mile upstream**

**37.8330637946371, -80.97487941113077**

## Steep Valley Fire Meeting Schedule

0630	Pre-Ops Briefing
0700	Operational Briefing
1200	C & G
1800	Strategy & Tactics
1830	Planning Meeting
1900	Operations Debrief/AAR
2000	IAP Due for review

# MEDICAL PLAN (ICS 206 WF)

Controlled Unclassified Information//Basic

1. Incident/Project Name		2. Operational Period						
Steep Valley Fire		Date/Time 11/14/2023 0700-1900						
3. Ambulance Services								
Name	Complete Address	Phone & EMS Frequency		Advanced Life Support (ALS)		Yes	No	
						<input type="checkbox"/>	<input type="checkbox"/>	
						<input type="checkbox"/>	<input type="checkbox"/>	
4. Air Ambulance Services								
Name	Phone	Type of Aircraft & Capability						
Healthnet	800-346-4206	Charleston , WV						
Air Evac	800-346-4206	Beckley ,WV						
5. Hospitals								
Name Complete Address	GPS Datum – WGS 84 Coordinate Standard Degrees Decimal Minutes DD° MM.MMM' N - Lat DD° MM.MMM' W - Long		Travel Time Air Gnd		Phone	Helipad Yes No		Level of Care Facility
	Lat:	Long:						
MedExpress Urgent Care5447 Maple Lane, Fayetteville, WV 25840	Lat:			15 Min	(304) 658-9397	<input type="checkbox"/>	<input checked="" type="checkbox"/>	Minor Injuries
Raleigh General 1710 Harper Rd., Beckley, WV	Lat:	N37°47.268'	10 Min	30 Min	304-256-4100	<input checked="" type="checkbox"/>	<input type="checkbox"/>	Trauma Level III
	Long:	W81°12.138'						
	VHF:							
Cabell Huntington Hospital 340 Hal Greer Boulevard, Huntington, WV	Lat:	N38° 24.59'	15 Min	120 Min	304-526-2000	<input checked="" type="checkbox"/>	<input type="checkbox"/>	Burn Center
	Long:	W81°10.086'						
	VHF:							
Beckley Appalachian Regional 306 Stanaford Rd., Beckley, WV	Lat:	N37°47.91'	10 Min	30 min	304-255-3825	<input checked="" type="checkbox"/>	<input type="checkbox"/>	Trauma Level III
	Long:	W81°10.086'						
	VHF:							
Charleston Area Medical Center, General Division 501 Morris St, Charleston, WV 25301	Lat:	N38° 20.86'	26 min	70 min	(304)388-5432	<input checked="" type="checkbox"/>	<input type="checkbox"/>	Trauma Level I
	Long:	W81° 37.65'						
	VHF:							
6. Division   Branch   Group		Area Location Capability						
Division A/B		EMS Responders & Capability:		Jeff Kwiecien Paramedic				
		Equipment Available on Scene:		AMB2 E-14 available at DP20				
		Medical Emergency Channel:		Tac 1				
		ETA for Ambulance to Scene:						
		Air:						
		Ground:						
		Approved Helispot:						
		Lat:						
		Long:						
		Division Y		EMS Responders & Capability:		Mark Place EMT		
Equipment Available on Scene:								
Medical Emergency Channel:				Tac 4				
ETA for Ambulance to Scene:								
Air:								
Ground:								
Approved Helispot:								
Lat:								
Long:								

# MEDICAL PLAN (ICS 206 WF)

Controlled Unclassified Information//Basic

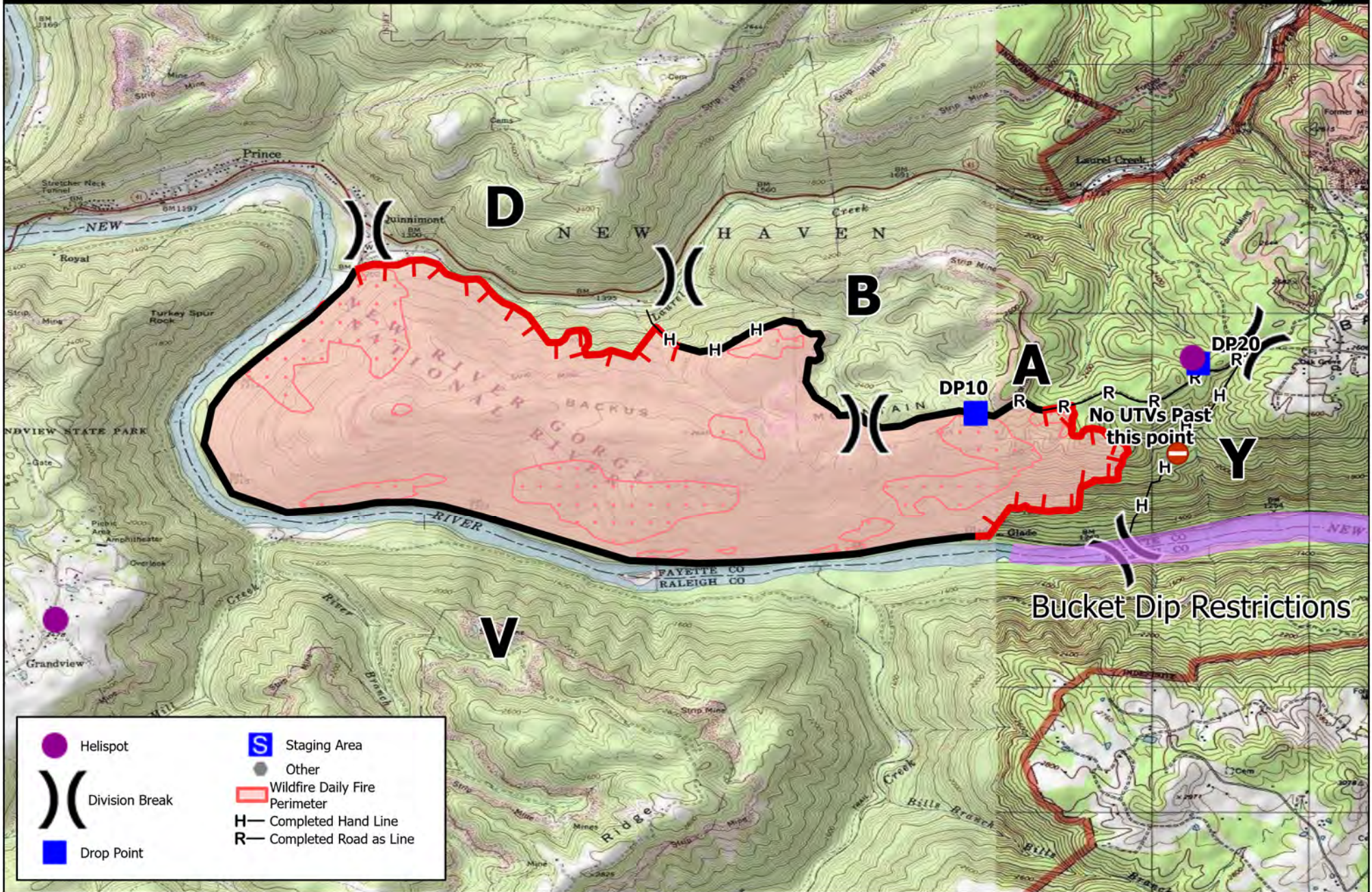
7. Name & Location	Remote Camp Location(s)			
	Point of Contact:			
	EMS Responders & Capability:			
	Equipment Available on Scene:			
	Medical Emergency Channel:			
	ETA for Ambulance to Scene:			
	Air:			
	Ground:			
	Approved Helispot:			
	Lat:			
	Long:			
		Point of Contact:		
		EMS Responders & Capability:		
		Equipment Available on Scene:		
		Medical Emergency Channel:		
ETA for Ambulance to Scene:				
Air:				
Ground:				
Approved Helispot:				
Lat:				
Long:				
8. Prepared By (Medical Unit Leader)	9. Date/Time	10. Reviewed By (Safety Officer)	11. Date/Time	
Kathy Zerkle	11/12/2023 2100			



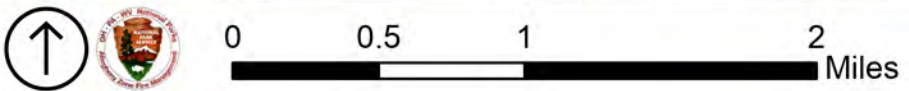
# Steep Valley Wildfire - November 14, 2023

New River Gorge National Park, WV

National Park Service  
U.S. Department of the Interior



	Helispot		Staging Area
	Division Break		Other
	Drop Point		Wildfire Daily Fire Perimeter
			Completed Hand Line
			Completed Road as Line



Date Saved: 11/13/2023







## Medical Incident Report

**FOR A NON-EMERGENCY INCIDENT, WORK THROUGH CHAIN OF COMMAND TO REPORT AND TRANSPORT INJURED PERSONNEL AS NECESSARY.**

**FOR A MEDICAL EMERGENCY: IDENTIFY ON-SCENE INCIDENT COMMANDER BY NAME AND POSITION AND ANNOUNCE "MEDICAL EMERGENCY" TO INITIATE RESPONSE FROM IMT COMMUNICATIONS/DISPATCH.**

Use the following items to communicate situation to communications / dispatch.

1. **CONTACT COMMUNICATIONS / DISPATCH** (Verify correct frequency prior to starting report) *Ex: "Communications, Div. Alpha. Stand-by for Emergency Traffic."*
2. **INCIDENT STATUS:** *Provide incident summary (including number of patients) and command structure.*  
*Ex: "Communications, I have a Red priority patient, unconscious, struck by a falling tree. Requesting air ambulance to Forest Road 1 at (Lat./Long.) This will be the Trout Meadow Medical, IC is TFLD Jones. EMT Smith is providing medical care."*

Severity of Emergency / Transport Priority	<input type="checkbox"/> <b>RED / PRIORITY 1</b> Life or limb threatening injury or illness. Evacuation need is IMMEDIATE <i>Ex: Unconscious, difficulty breathing, bleeding severely, 2° – 3° burns more than 4 palm sizes, heat stroke, disoriented.</i>	
	<input type="checkbox"/> <b>YELLOW / PRIORITY 2</b> Serious Injury or illness. Evacuation may be DELAYED if necessary <i>Ex: Significant trauma, unable to walk, 2° – 3° burns not more than 1-3 palm sizes.</i>	
	<input type="checkbox"/> <b>GREEN / PRIORITY 3</b> Minor Injury or illness. Non-Emergency transport <i>Ex: Sprains, strains, minor heat-related illness.</i>	
	<input type="checkbox"/> <b>Purple/Other</b> Non Medical other potential critical incidents <i>Ex: Unaccounted for incident resources, threats to employees, chemical spills, incidents not requiring the use of ICS-206 but requiring IMT response</i>	
Nature of Injury or Illness & Mechanism of Injury		Brief Summary of Injury or Illness ( <i>Ex: Unconscious, Struck by Falling Tree</i> )
Evacuation Request		Air Ambulance / Short Haul/Hoist Ground Ambulance / Other
Patient Location		Descriptive Location & Lat. / Long. (WGS84)
Incident Name		Geographic Name + Medical ( <i>Ex: Trout Meadow Medical</i> )
On-Scene Incident Commander		Name of on-scene IC of Incident within an Incident ( <i>Ex: TFLD Jones</i> )
Patient Care		Name of Care Provider ( <i>Ex: EMT Smith</i> )

**3. INITIAL PATIENT ASSESSMENT:** Complete this section for each patient as applicable (start with the most severe patient)

Patient Assessment: See IRPG PAGE 106

Treatment:

**4. EVACUATION PLAN:**

Evacuation Location (*if different*): (*Descriptive Location (drop point, intersection, etc.) or Lat. / Long.*) Patient's ETA to Evacuation Location:

Helispot / Extraction Site Size and Hazards:

**5. ADDITIONAL RESOURCES / EQUIPMENT NEEDS:**

*Example: Paramedic/EMT, crews, immobilization devices, AED, oxygen, trauma bag, IV/fluid(s), splints, rope rescue, wheeled litter, HAZMAT, extrication*

**6. COMMUNICATIONS: Identify State Air/Ground EMS Frequencies and Hospital Contacts as applicable**

Function	Channel Name/Number	Receive (RX)	Tone/NAC *	Transmit (TX)	Tone/NAC *
COMMAND					
AIR-TO-GRND					
TACTICAL					

**7. CONTINGENCY:** Considerations: *If primary options fail, what actions can be implemented in conjunction with primary evacuation method? Be thinking ahead..*

**8. ADDITIONAL INFORMATION:** *Updates/Changes, etc.*

**REMEMBER:** Confirm ETAs of resources ordered. Act according to your level of training. Be Alert. Keep Calm. Think Clearly. Act Decisively.