

Incident Checklist:

Technology:

1. PC & Charger Cord
2. ArcGIS Desktop License Borrowed
3. Mouse/Keyboard/Mousepad
4. Monitor
5. Extension Cord
6. Headphones
7. Thumbdrive
8. Cell phone
9. USB Charger
10. Cables/Cords for various devices
 - a. Usb micro, mini, C,
 - b. Ethernet Cord
 - c. Garmin specific
 - d. Apple 30 pin/lightning
11. Laptop Bag
12. Additional Software:
 - a. Garmin Basecamp
 - b. DNR GPS

Admin:

1. Check in
2. DNR ID
3. Training Red Book/Red Card

Personal items:

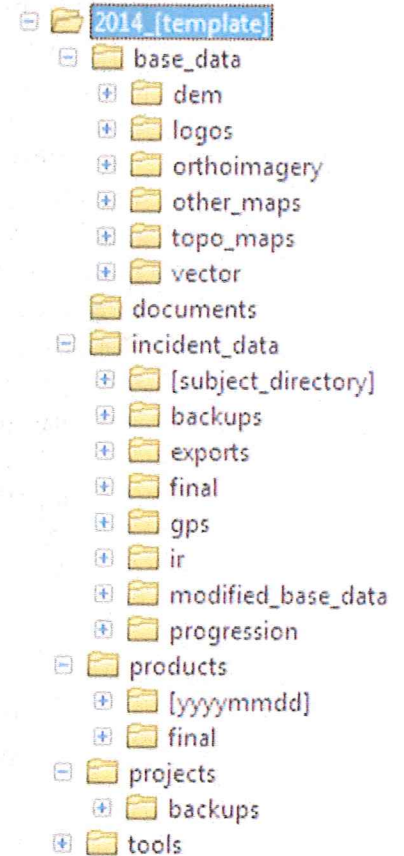
1. Clothes 2 weeks
2. PPE
3. Toiletries
4. Earplugs, contacts, meds 2 week supply
5. Snacks
6. Water bottle & Thermos

2018 FRD GISS Training

Dorothy Judd Conference Room, 4th Floor Con Hall

February 8th

- **1300 – Introduction and class expectations**
 - GISS ICS
 - GISS Expectations
 - GISS Preparing for Assignment
 - GISS Position – ICP/Camp
 - GISS Position – Workspace, Hardware, Software and Incident Information
 - GISS Position – Routine, Duties and Demob
 - Get out and get your boots dusty – Incident Management Teams
- **1400 – GSTOP and GIS Specialist Training**
 - GSTOP – Geographic Information System Standard Operating Procedures
 - GSTOP – File Naming & Directory Structure
 - Map Symbology and Standard Map Elements
 - Introduction to the Event Geodatabase
 - Event Geodatabase Editing
 - Editing the Event Geodatabase Polygon
 - Editing the Event Geodatabase Line
 - Editing the Event Geodatabase Point
 - Working with Incident Data
- **1500 – Break**
- **1515 – Incident Action Plan Mapping Exercise**
- **1630 – Adjourn for the Day**



February 9th

- **0800 – Map Elements**
 - Labeling and Annotation
 - IAP Map
- **0900 – Incident Action Plan Mapping Exercise continues**
- **1200 – Lunch**
- **1300 – GISS Standard Products**
 - Briefing Map
 - Situation Map
 - Transportation Map
 - Operations Map
 - Progression Map (aka “Glory Map”)
 - Other Maps
- **1400 – Backup, Share and Archive**
 - Backup and Upload Exercise (Filezilla)
- **1500 – Break**
- **1515 – Deploying Maps with QR Code**
- **1530 – IAP Mapping Exercise Continues**
- **1600 – Wrap Up**
- **1630 - Adjourn**

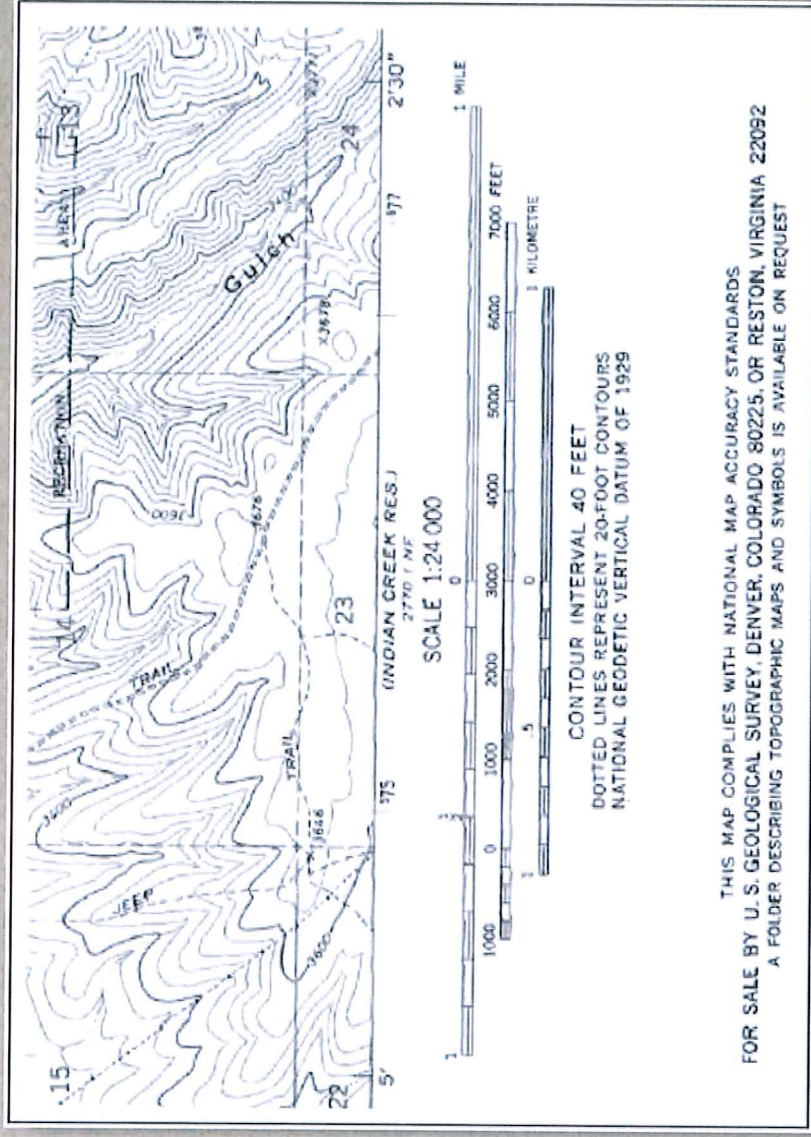
ArcGIS Version - Fire Season 2018 and 2018 S-341

	<i>Training Requirement</i>	<i>Incident Requirement</i>
2018	ArcMap (10.5.1) with introduction to ArcGIS Pro (2.0.1)	ArcMap 10.5.1
2019	ArcMap or ArcGIS Pro	ArcMap
2020	ArcGIS Pro Only	ArcGIS Pro Only

- [-] 2013_incidents
 - [-] 2013_[template]
 - [-] 2013 Forge
 - [-] base_data
 - [-] dem
 - [-] logos
 - [-] orthoimagery
 - [-] other_maps
 - [-] topo_maps
 - [-] vector
 - [-] documents
 - [-] 20130402_1230_Forge_PAVFP778_owner_summary.xlsx
 - [-] incident_data
 - [-] [subject_directory]
 - [-] backups
 - [-] 20130401_0830_Forge_PAVFP778_fimt100011.gdb
 - [-] exports
 - [-] 20130401_0940_Forge_PAVFP778_ics_flin_u18n83.shp
 - [-] 20130402_2230_Forge_PAVFP778_ics_pnt_u18n83.shp
 - [-] final
 - [-] 20130403_1530_Forge_PAVFP778_fimt100011.gdb
 - [-] gps
 - [-] 20130402_1224_Forge_PAVFP778_GPS_feat_divs_Cleo_llw84.gpx
 - [-] 20130402_1540_Forge_PAVFP778_GPS_lin_fobs_Marsh_u18n83.shp
 - [-] ir
 - [-] 20130403_0121_Forge_PAVFP778_IR_IntenseHeat_poly_u18n83.shp
 - [-] modified_base_data
 - [-] 20130401_1147_Forge_PAVFP778_modified_roads_u18n83.shp
 - [-] progression
 - [-] 2013_Forge_PAVFP778_fimt100011.gdb
 - [-] 2013_Forge_PAVFP778_Other_Incident_Data_Arc10.gdb
 - [-] i_20130401_0640_Forge_PAVFP778_tfr_5nm_pol_u18n83
 - [-] i_20130402_1220_Forge_PAVFP778_evac_route_lin_u18n83
 - [-] i_20130402_1330_Forge_PAVFP778_MP_Grid_Index_6_pg_11x17_land_u18n83
 - [-] i_20130402_1650_Forge_PAVFP778_MAP_lin_u18n83
 - [-] products
 - [-] 20130402
 - [-] trans_letter_land_150dpi_20130402_2120_Forge_PAVFP778_0517Day.jpg
 - [-] final
 - [-] projects
 - [-] backups
 - [-] sit_ansi_e_land_20130401_1224_Forge_PAVFP778.mxd
 - [-] iap_11x17_land_MP_2013_Forge_PAVFP778.mxd
 - [-] prog_ansi_d_land_2013_Forge_PAVFP778.mxd
 - [-] sit_ansi_e_land_2013_Forge_PAVFP778.mxd
 - [-] tools
 - [-] 2013_Forge_PAVFP778_prog_processing.tbx
 - [-] 2013_Forge_PAVFP778_File_Namer.xlsx

STANDL SGD

- Scale
- Title
- Author
- North Arrow
- Date
- Legend
- Source Statement
- Graticule/Grid
- Datum



THIS MAP COMPLIES WITH NATIONAL MAP ACCURACY STANDARDS
FOR SALE BY U.S. GEOLOGICAL SURVEY, DENVER, COLORADO 80225, OR RESTON, VIRGINIA 22092
A FOLDER DESCRIBING TOPOGRAPHIC MAPS AND SYMBOLS IS AVAILABLE ON REQUEST

LYTLE FIRE
CA-BDF-9582
Oct. 4, 2003

Ingram
August 17, 2003
2230 Hours

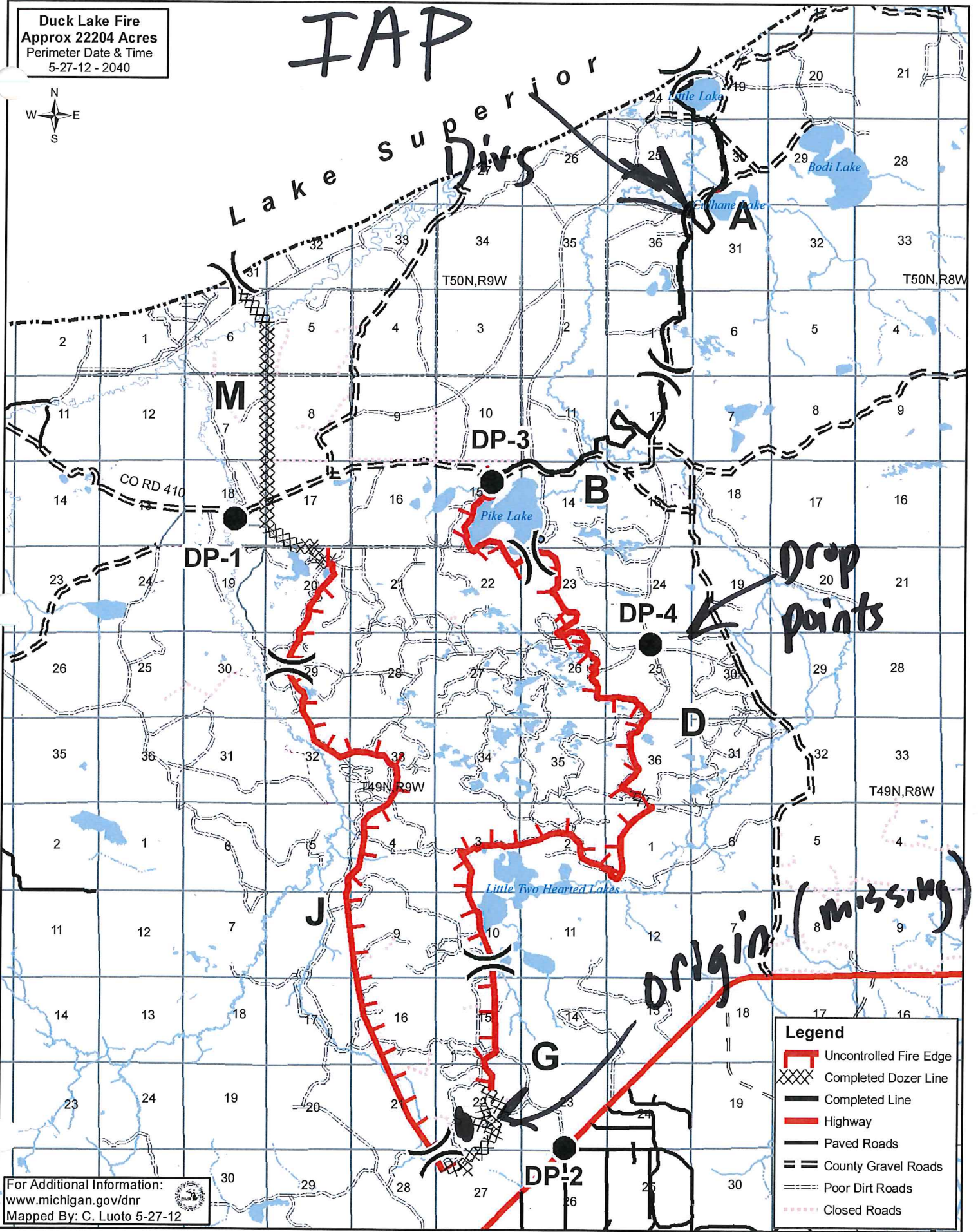


What & When :
products & time

Duck Lake Fire
 Approx 22204 Acres
 Perimeter Date & Time
 5-27-12 - 2040



IAP
 Lake Superior



Legend	
	Uncontrolled Fire Edge
	Completed Dozer Line
	Completed Line
	Highway
	Paved Roads
	County Gravel Roads
	Poor Dirt Roads
	Closed Roads

For Additional Information:
www.michigan.gov/dnr
 Mapped By: C. Luoto 5-27-12

Duck Lake Fire
Air Ops
 Approx 21135 Acres
 72% Contained
 Perimeter Date & Time
 6-2-12 - 2000

Air Ops
locations

N46° 40.92
 W85° 28.61

N46° 43.01
 W85° 21.89

N46° 38.87
 W85° 24.78

N46° 37.62
 W85° 24.87

N46° 36.98
 W85° 27.77

N46° 34.46
 W85° 25.29

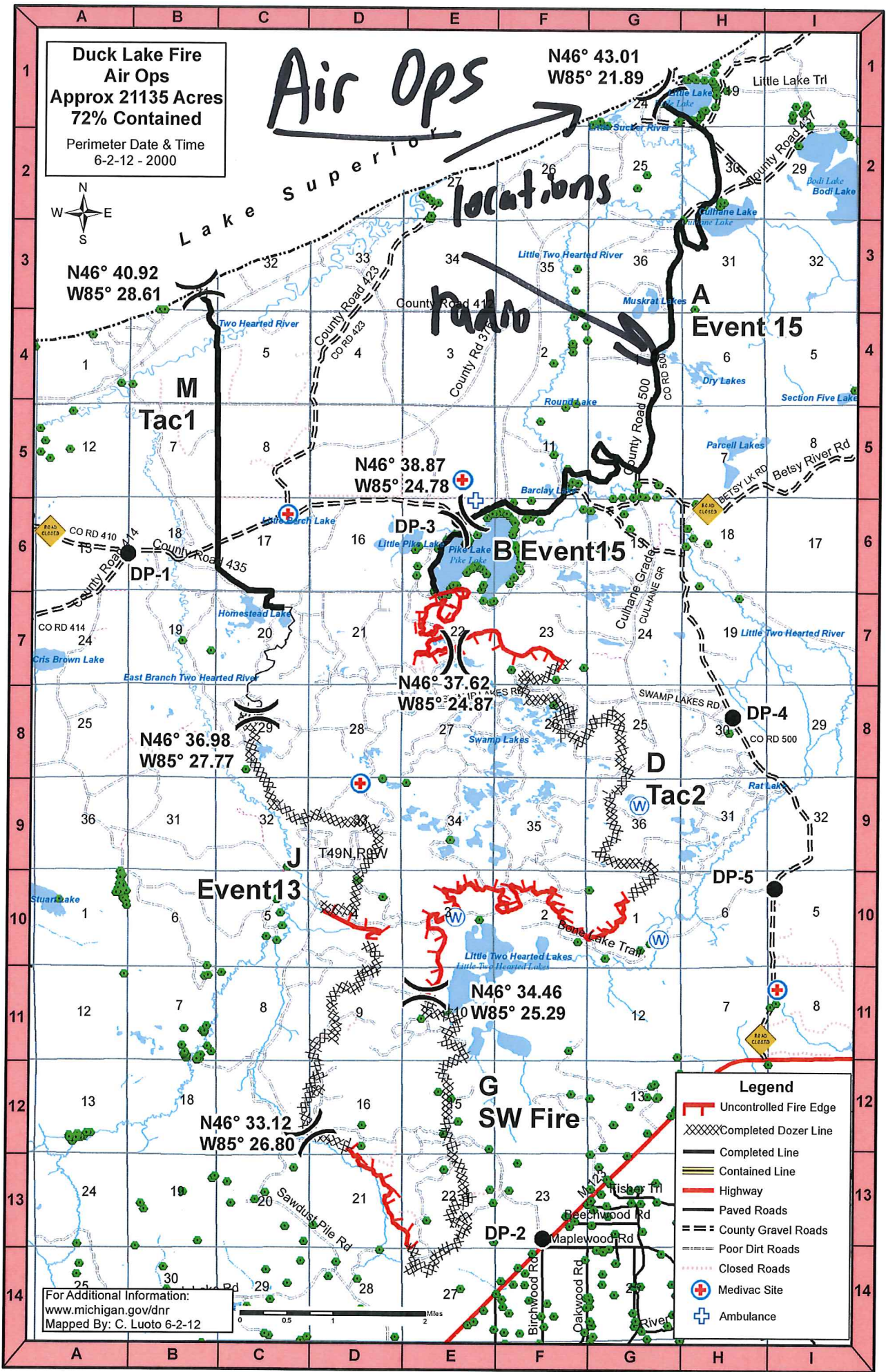
N46° 33.12
 W85° 26.80

G SW Fire

For Additional Information:
www.michigan.gov/dnr
 Mapped By: C. Luoto 6-2-12

Legend

- Uncontrolled Fire Edge
- Completed Dozer Line
- Completed Line
- Contained Line
- Highway
- Paved Roads
- County Gravel Roads
- Poor Dirt Roads
- Closed Roads
- Medivac Site
- Ambulance

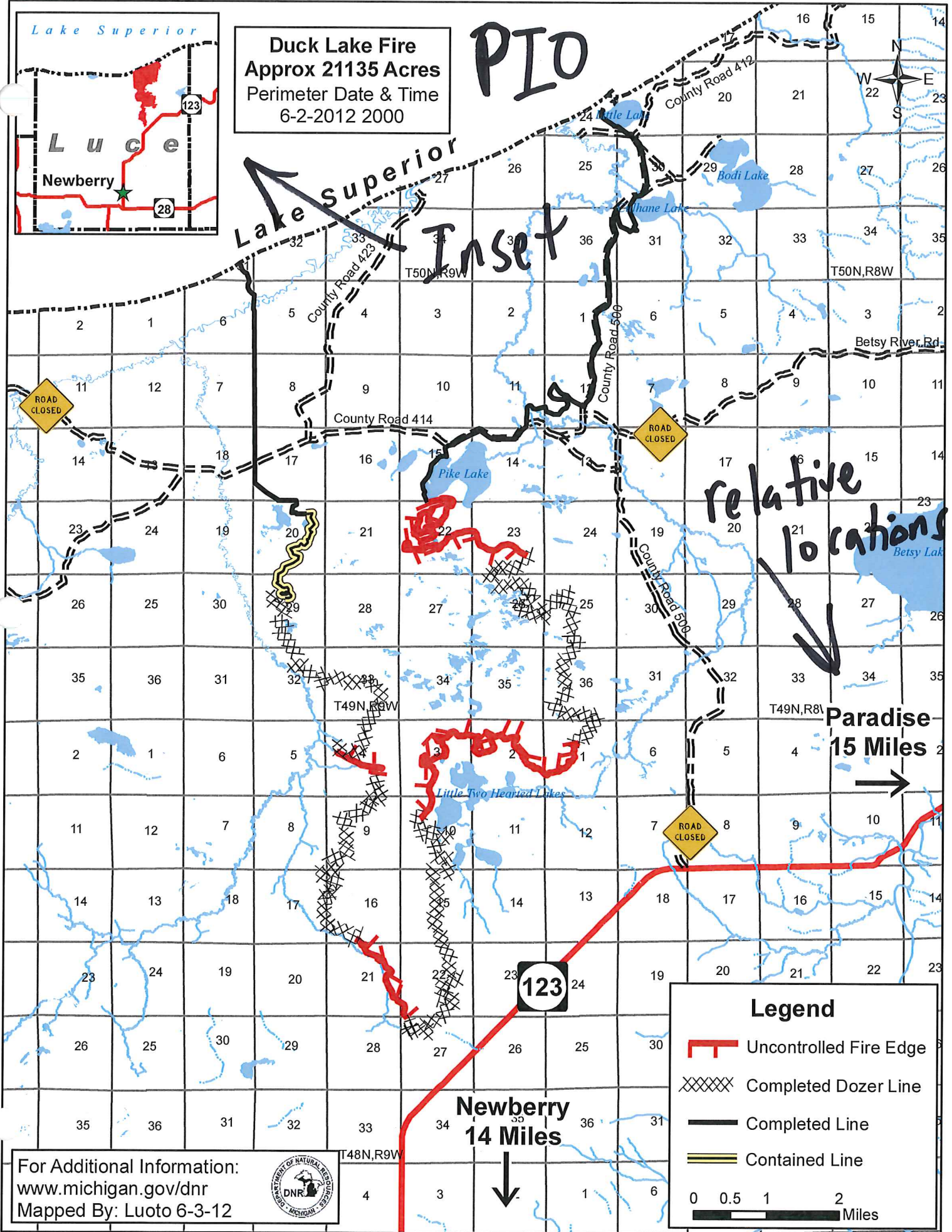


PIO

Duck Lake Fire
Approx 21135 Acres
Perimeter Date & Time
6-2-2012 2000



Lake Superior
Inset



relative locations

Paradise
15 Miles

Newberry
14 Miles

Legend

- Uncontrolled Fire Edge
- Completed Dozer Line
- Completed Line
- Contained Line

0 0.5 1 2 Miles

For Additional Information:
www.michigan.gov/dnr
Mapped By: Luoto 6-3-12



IAP cover

Duck Lake Fire



6 - 11 - 12

Duck Lake Fire
Air Ops
Approx 21135 Acres
72% Contained
 Perimeter Date & Time
 6-2-12 - 2000

Division Supervisors

N46° 43.01
 W85° 21.89



N46° 40.92
 W85° 28.61

Event 15

Tac1

N46° 38.87
 W85° 24.78

B Event15

N46° 37.62
 W85° 24.87

N46° 36.98
 W85° 27.77

Tac2

Event13

N46° 34.46
 W85° 25.29

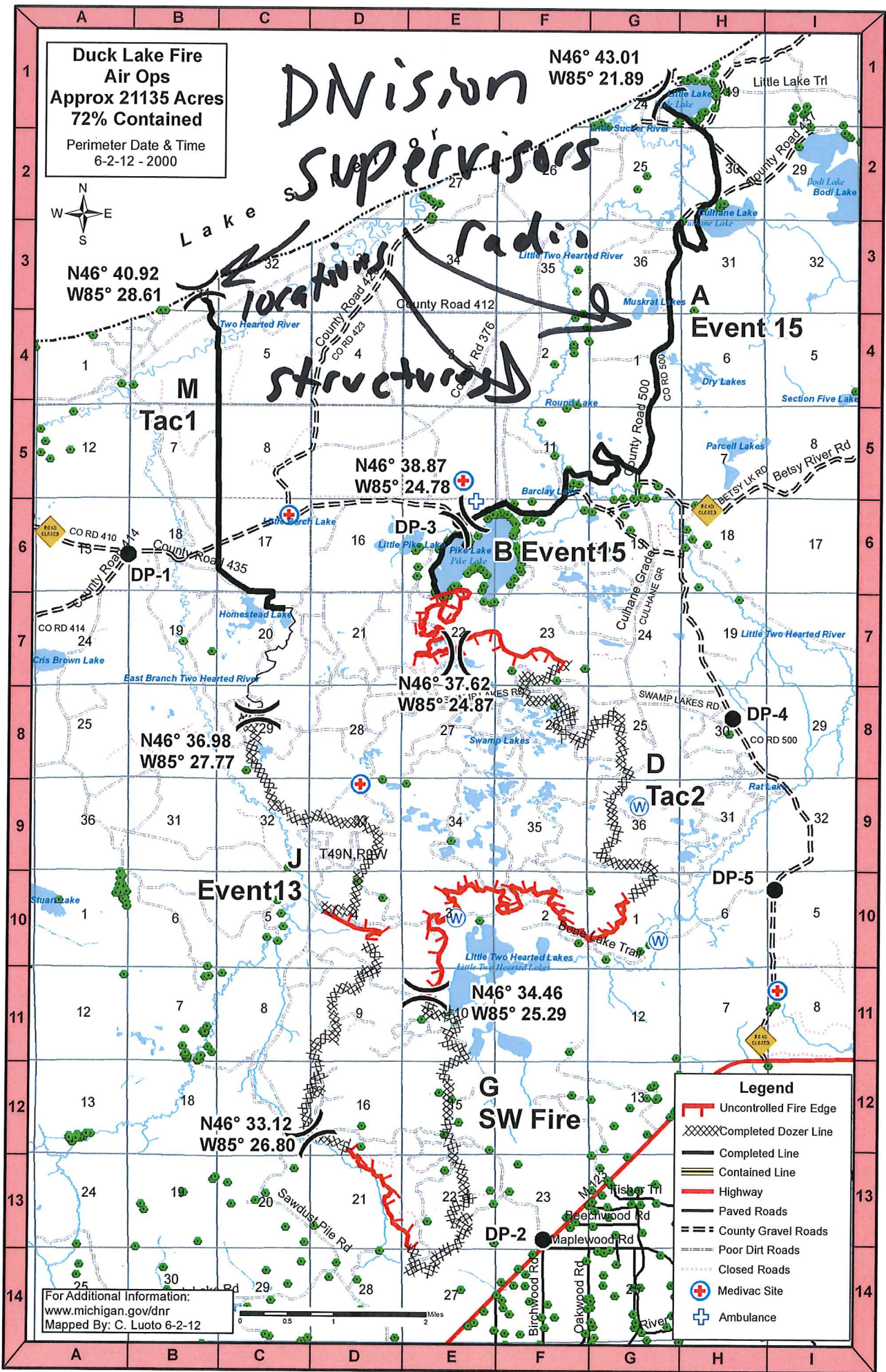
G SW Fire

N46° 33.12
 W85° 26.80

Legend

- Uncontrolled Fire Edge
- Completed Dozer Line
- Completed Line
- Contained Line
- Highway
- Paved Roads
- County Gravel Roads
- Poor Dirt Roads
- Closed Roads
- Medivac Site
- Ambulance

For Additional Information:
www.michigan.gov/dnr
 Mapped By: C. Luoto 6-2-12





Iceland Fire
 2/9/2018
 J. Schmidt
 497 Acres

perimeter as of 2/9/2018 0859
 perimeter 62% contained
 perimeter total length: 4.27 miles



Legend

- Paved Roads
- Gravel Roads
- Poor Dirt Roads
- Intermittent Stream
- Lake/Pond
- Perennial River
- Uncontrolled Fire Edge
- Completed Dozer Line
- Drop Point
- Fire Origin
- Water Source
- Division Break

