

Incident Action Plan- **EXAMPLE**

Slide Creek

~~ID-IPF-000436/P1EKS5-0104~~

Copper Mountain

~~ID-IPF-000486/P1L2R2-0104~~



Idaho Panhandle National Forests

MI WEST IMT Type 3 Team

Incident Commander

Pete Glover

Day Shift

Thursday, August 16, 2018

0700-1900

INCIDENT OBJECTIVES	1. Incident Name Slide Creek Copper Mtn	2. Date 08/15/2018	3. Time 2000
4. Operational Period 08/16/2018 0700-1900 Thursday EXAMPLE			
5. General Control Objectives for the Incident (include alternatives) <p>The highest priority is to protect the safety of fire personnel and human life followed by the protection of private property, protection of the municipal watershed, reduce impacts to Idaho Department of Lands and reduce spread into recommended wilderness. Strategies and tactical decisions will safely, effectively and efficiently address known and anticipated hazards while providing for the highest probability of success.</p> <p>MANAGEMENT OBJECTIVES:</p> <ul style="list-style-type: none"> • Utilize resources to maximize efficiency and minimize cost expenditures. • Provide accurate and timely fire information through interagency and public coordination. • High level of respect and conduct at all levels, both on and off-shift. • Maintain positive relationships with the community. 			
6. Operational Period Command Emphasis: CONTROL OBJECTIVES: Contain fire to smallest footprint within the private land to: <ul style="list-style-type: none"> • Reduce impacts to private land values. • Reduce the impacts to the municipal watershed. • Reduce the impacts to IDL lands to the west. • Reduce firefighter exposure. • Reduce spread of fire into recommended wilderness to reduce suppression complexities. 			
7. General Safety Message: - Drink plenty of water - keep hydrated. - Maintain 2:1 work/rest ratio. - Drive with headlights on. - Watch for livestock and wildlife. - BE BEAR AWARE.			
8. Attachment (mark if attached) <div style="display: flex; flex-wrap: wrap; padding: 10px;"> <div style="width: 50%;"><input checked="" type="checkbox"/> ICS 202</div> <div style="width: 50%;"><input checked="" type="checkbox"/> Fire Behavior Forecast</div> <div style="width: 50%;"><input checked="" type="checkbox"/> Communication Plan</div> <div style="width: 50%;"><input checked="" type="checkbox"/> Incident Maps</div> <div style="width: 50%;"><input checked="" type="checkbox"/> ICS 203</div> <div style="width: 50%;"><input checked="" type="checkbox"/> ICS 204</div> <div style="width: 50%;"><input checked="" type="checkbox"/> Safety Message</div> <div style="width: 50%;"><input checked="" type="checkbox"/> Line 9</div> <div style="width: 50%;"><input checked="" type="checkbox"/> Weather Forecast</div> <div style="width: 50%;"><input checked="" type="checkbox"/> ICS 220</div> <div style="width: 50%;"><input checked="" type="checkbox"/> ICS 206</div> <div style="width: 50%;"><input checked="" type="checkbox"/> Unit Log</div> </div>			
9. Prepared by (Planning Section Chief)		10. Approved by (Incident Commander)	
J. Burnham		Pete Glover	

1. Incident Name: Slide Creek EXAMPLE Copper Mtn		2. Operational Period: Date From: 08/16/18 Date To: 08/16/18 Time From: 0700 Time To: 1900	
3. Incident Commander(s) and Command Staff:		7. Operations Section:	
IC/UCs	Pete Glover	Chief	Avi Shalom
		Deputy	
Deputy		Staging Area	
Safety Officer	Rob Shields	Branch	
Public Info. Officer	John Pepin	Branch Director	
Liaison Officer	Jessica Mistak	Deputy	
4. Agency/Organization Representatives:		Division/Group	Slide Creek Greg Tarnowski
Agency/Organization	Name	Division/Group	Copper Mtn Tango Jason Tokar
USFS AA	Kevin Knauth	Division/Group	Copper Mtn Delta Jay Osterberg
USFS REP		Division/Group	
IDL REP	Tom Fleer (Slide Creek)	Division/Group	
Bonnors Ferry Rural Rep		Branch	
Read		Branch Director	
Sheriff	David Kramer	Deputy	
5. Planning Section:		Division/Group	
Chief	Josh Brink, Jennifer Burnham	Division/Group	
Deputy		Division/Group	
Resources Unit	Monica Weis, Rick-James Hill	Division/Group	
Situation Unit		Division/Group	
Documentation Unit		Branch	
Demobilization Unit	Monika Wood	Branch Director	
Technical Specialists		Deputy	
GIS	Cory Luoto,	Division/Group	
FBAN		Division/Group	
Incident Meteorologist		Division/Group	
6. Logistics Section:		Division/Group	
Chief	Dan McNamee	Division/Group	
Deputy	Shane O'Shea	Air Operations Branch	
Support Branch		Air Ops Branch Dir.	Billie Washburn
Director			
Supply Unit			
Facilities Unit		8. Finance/Administration Section:	
Ground Support Unit	Tim Sternberg	Chief	Kelly Multerer
Service Branch		Deputy	
Director		Time Unit	Vikki Jo Snider
Communications Unit	Tori Irving, Drew Krugh	PTRC	Loretta Hunsaker
Medical Unit		PTRC	Jaime Zolman
Food Unit		Cost Unit	
9. Prepared by: Name: J. Burnham _____ Position/Title: PSC _____ Signature: <i>Jennifer Burnham</i>			

<h1 style="margin: 0;">DIVISION ASSIGNMENT LIST</h1>				1. Branch <div style="font-size: 1.5em; color: red; font-weight: bold; margin: 5px 0;">EXAMPLE</div>		2. Division/Group		
3. Incident Name <div style="font-size: 1.2em; font-weight: bold; margin: 5px 0;">Slide Creek</div>				4. Operational Period <div style="display: flex; justify-content: space-between;"> Date: August 16, 2018 Time: Day 0700 - 1900 </div>				
5. Operations Personnel								
Operations Chief		Avi Shalom		Division/Group Supervisor		Greg Tarnowski		
Branch Director				Air Attack Supervisor				
Safety Officer		Rob Shields						
6. Resources Assigned this Period								
Strike Team/Task Force/ Resource Designator		Leader		Number Persons	Trans. Needed	Drop Off PT./Time	Pick Up PT./Time	Tentative Last Work Day
1.	C-3 Crew, Type 2-K River	Steve Strassburg		20	N	ICP/0700	ICP/1800	8/20
2.								
3.	O-17 EMTF	Emma Kashian		1	N	ICP/0700	ICP/1800	8/21
4.								
5.								
6.								
7.								
8.								
9.								
10.								
11.								
12.								
13.								
14.								
15.								
16.								
7. Control Operations <ul style="list-style-type: none"> Patrol and mop up as appropriate and as safety considerations are met. Limit personnel exposure to snag hazards. Relocate and return accountable property as fire conditions permit. 								
8. Special Instructions <ul style="list-style-type: none"> Use caution around snags and flag as needed for safety. Use caution while driving on Highway 95/FS. Be aware of the increased traffic; use caution while driving to and from the fire. Be aware of wildlife around the fire and use caution when encountered. Utilize command frequency to communicate with shift resources. Back haul excess equipment and trash. Take bear safety precautions and contact an incident safety with question. 								
9. Division/Group Communication Summary								
Function	Frequency	System	Channel	Function	Frequency	System	Channel	
Command Repeater	See Comm Plan			Command	See Comm Plan			
TAC	See Comm Plan			Air To Ground	See Comm Plan			
Prepared by (Resource Unit Leader): <div style="font-size: 1.1em; font-weight: bold; margin-top: 5px;">J. Burnham</div>			Approved by (Planning Section Chief): <div style="font-size: 1.1em; font-weight: bold; margin-top: 5px;"><i>Josh Brink</i></div>			Date <div style="font-weight: bold; margin-top: 5px;">August 15, 2018</div>		Time <div style="font-weight: bold; margin-top: 5px;">2000</div>

DIVISION ASSIGNMENT LIST				1. Branch EXAMPLE		2. Division/Group Tango	
3. Incident Name Copper Fire				4. Operational Period Date: August 16, 2018 Time: Day 0700 - 1900			
5. Operations Personnel							
Operations Chief		Avi Shalom		Division/Group Supervisor		Jason Tokar	
Safety Officer		Rob Shields					
6. Resources Assigned this Period							
Strike Team/Task Force/ Resource Designator		Leader		Number Persons	Trans. Needed	Drop Off PT./Time	Pick Up PT./Time
							Tentative Last Work Day
1.	C-6 Delaware	Mike Valenti		20	N	SC/0700	SC/2000
2.	O-23 EMPF	Marcum Rova Jr		1	N	SC/0700	SC/2000
3.	C-5 PA 2	Fran Chadick		19	N	SC/0700	SC/2000
4.	O-38 Feller Module	Jonathon McPherson		2	N	SC/0700	SC/2000
5.	E-24 Timbered Rangeland Mngt LLc	Craig Thomas		1	N	SC/0700	SC/2000
6.	E-26 Dozer T2	Brad Arzen		1	N	SC/0700	SC/2000
7.							
8.							
9.							
10.							
11.							
12.							
9. Control Operations <ul style="list-style-type: none"> Establish anchor point on the SE edge of fire. Continue to progress along fires edge utilizing Aerial resources. Also, constructing line along the East flank and hot spotting as necessary. Continue snagging and line construction along the East flank to head of the fire. Patrol and pulling in edges back to the heel of the fire and H2. Provide for LCES. 							
10. Special Instructions <ul style="list-style-type: none"> Perform grids in the green looking for additional spot fires. 							
9. Division/Group Communication Summary							
Function	Frequency	System	Channel	Function	Frequency	System	Channel
Command Repeater	See Comm Plan		13	Command	See Comm Plan		
TAC	See Comm Plan		1	Air To Ground	See Comm Plan		12
Prepared by (Resource Unit Leader): J. Burnham			Approved by (Planning Section Chief): <i>Josh Brink</i>			Date August 14, 2018	
						Time 2000	

DIVISION ASSIGNMENT LIST			1. Branch EXAMPLE		2. Division/Group Delta		
3. Incident Name Copper Fire			4. Operational Period Date: August 15, 2018 Time: Day 0700 - 1900				
5. Operations Personnel							
Operations Chief		Avi Shalom		Division/Group Supervisor		Jay Osterberg	
Safety Officer		Rob Shields					
6. Resources Assigned this Period							
Strike Team/Task Force/ Resource Designator		Leader		Number Persons	Trans. Needed	Drop Off PT./Time	Pick Up PT./Time
		Tentative Last Work Day					
1.	C-13 Helena Regulars	Todd Burbridge	22	N	SC/0700	SC/2000	8/21
2.							
3.							
4.							
5.							
6.							
7.							
8.							
9.							
10.							
11.							
12.							
13.							
14.							
15.							
16.							
17.							
11. Control Operations							
<ul style="list-style-type: none"> Division Delta construct line and hot spot from SE anchor and progress to the west and North along Canadian and US border. Utilize Canadian aerial resources and US hand crews. Continue snagging along western edge and head of fire and complete hand line. Look for possible areas for sling sites for bladder bags and supplies. Provide for LCES. 							
12. Special Instructions							
<ul style="list-style-type: none"> Perform grids in the green looking for additional spot fires. 							
9. Division/Group Communication Summary							
Function	Frequency	System	Channel	Function	Frequency	System	Channel
Command Repeater	See Comm Plan		13	Command	See Comm Plan		
TAC	See Comm Plan		2	Air To Ground	See Comm Plan		12
Prepared by (Resource Unit Leader): J.Burnham			Approved by (Planning Section Chief): Josh Brink			Date August 14, 2018	Time 2000

EXAMPLE

Forecast:

Spot Forecast for copper mountain fire...USFS
National Weather Service Spokane WA
1144 AM PDT Tue Aug 14 2018

Forecast is based on forecast start time of 1200 PDT on August 14.
If conditions become unrepresentative...contact the National Weather Service.

.TONIGHT...

Sky/weather.....Mostly clear. Smoke through the night.
CWR.....0 percent.
LAL.....1.
Min temperature.....47.
Max humidity.....69 percent.
Wind (20 ft).....Northwest winds 5 to 8 mph in the evening
becoming northeast winds 2 to 5 mph after
midnight.
Mixing height.....Becoming 800 ft AGL after 2100.
Transport winds.....North around 6 mph.
Haines Index.....2 very low.

.MONDAY...

Sky/weather.....Sunny. Haze and smoke.
CWR.....0 percent.
LAL.....1.
Max temperature.....71.
Min humidity.....30 percent.
Wind (20 ft).....Northeast 2 to 5 mph.
Mixing height.....Becoming 6000 ft AGL in the afternoon.
Transport winds.....Northeast around 4 mph.
Haines Index.....2 very low.

FIRE BEHAVIOR FORECAST_ **EXAMPLE**

FORECAST NO.: 7

NAME OF FIRE: Slide Creek & Copper Mountain

PREDICTED FOR: Day Shift

UNIT: Idaho Panhandle National Forest

SHIFT DATE: 8/15/2018

TIME AND DATE

SIGNED: ____ J.Burnham ____

FORECAST ISSUED: 8/14/2018 0045

WEATHER FORECAST: Sunny today with a minimum humidity of 30%. Maximum temp of 71 by 1500. NE winds 2-5 mph with potential for 10 mph on ridge tops... SEE ATTACHED COMPLETE FORECAST.

FIRE BEHAVIOR

GENERAL: No rain was received over the fire yesterday or into the night with little recovery. Single tree and group torching occurred yesterday and more of the same is expected today. Mature red pine/white pine (C5), P(I) over 95% and a possible spotting distance up to ¼ mile. Short grasses (01a) have a P(I) over 95% with curing of 75% or more; spread rates drop significantly with less. 90% containment occurred over the first burn period on the Slide Fire. Copper Mountain Fire has 0% containment.

SPECIFIC:

Copper Mountain Fire

Division D: This division should have light smoke today with the NE winds. Single tree torching near the line could allow for more spot fires to occur. NE winds should help to reduce more fire spread into Canada. Unsuppressed spot fires spread at 33 - 15 feet/min and have 2-9 foot flame lengths depending on fuel types.

Division T: Access is the challenge here and will be pushed by the wind in comparison to Div D. Unburned fuel inside the line or spot fires in Pine could spread at 36 feet/min and have 10-foot flame lengths. Single tree torching is likely in these fuels. Unburned fuels, and rocky ground combine to make this a very difficult division.

Slide Creek Fire

Most of the fuel has been reduced from a clean burn. Light NE winds can change to upslope winds on SE side of the fire. Smoke will also be heavier in the valley with the lighter winds.

SAFETY: Steep, rocky terrain with dead fuels and pine with moistures still climbing will allow for torching. Watch for spotting below you and on the other side of the control lines.

INCIDENT RADIO COMMUNICATIONS PLAN			1. Incident Name Copper Mountain Fire EXAMPLE		2. Date/Time Prepared August 14, 2018 2000		3. Operational Period Date/Time August 15, 2018 0700 - 1900	
CH	Rx	RX CG	TX	TX CG	LABEL	BAND		
1	169.4000	167.9	169.4000	167.9	BF IA	N		
2	163.8900	0.0	163.8900	0.0	BS SILVR	N		
3	168.6125	0.0	168.6125	0.0	COM USE 1	N		
4	163.7125	0.0	163.7125	0.0	COM USE 2	N		
5	173.6250	0.0	173.6250	0.0	COM USE 3	N		
6	172.4000	107.2	165.4875	131.8	SADDLE	N		
7	172.4000	107.2	165.4875	103.5	BLK FS	N		
8	172.4000	107.2	165.4875	123.0	HALL MTN	N		
9	159.4500	77.0	159.4500	77.0	IDL DIR5	N		
10	159.3000	114.8	151.3250	123.0	BLK IDL	N		
11	171.3875	0.0	171.3875	123.0	KOOT N	N		
14	151.1450	0.0	151.1450	0.0	A/G IDL	N		
15	168.5375	0.0	168.5375	0.0	A/G 54	N		
16	155.2800	0.0	155.2800	156.7	EMS 2	N		
12	166.600	0.0	166.600	0.0	A/G	N		
13	169.5375	103.5	164.7125	103.5	QUEEN	N		
5. Prepared by (Communications Unit) Tori Irving, Drew Krugh								

EXAMPLE




MEDICAL PLAN	1. INCIDENT NAME Copper Mtn / Slide Creek Fires	2. DATE PREPARED 8/9/2018	3. TIME PREPARED 0700	4. OPERATIONAL PERIOD 8/10/2018 to 8/11/2018				
	5. INCIDENT MEDICAL AID STATIONS							
MEDICAL AID STATIONS	LOCATION			PARAMEDICS				
				YES	NO			
EMT on Slide Creek	Emma Kashian Slide				X			
Crew EMT'S on Copper Mtn	Crew EMT's				X			
Paramedic Line EMPF	Marcum Rova Copper Mtn.			X				
6. TRANSPORTATION								
A. AMBULANCE SERVICES								
NAME	ADDRESS		PHONE	PARAMEDICS				
				YES	NO			
Boundary County EMS	6658 Comanche St. Bonners Ferry, Id 83805 208-267-2604		911	X				
B. AIR AMBULANCES								
NAME	Phone		PARAMEDICS					
			YES NO					
Life Flight	(800) 232-0911 911		X					
Two Bear Air	406-755-4297							
Short Haul	Call Air Ops to Order		X					
7. HOSPITALS								
NAME	GPS Datum WGS 84	TRAVEL TIME		PHONE	HELIPAD		BURN CENTER	
		AIR	GRND		YES	NO	YES	NO
Boundary Medical, Bonners Ferry Idaho	LAT: 48 42.127 LONG: 116 19.266 ddm	10	70		X			
Kootenai Health Coeur d' Alene Idaho	LAT: 47 41 45.658 N LONG 116 47 41.684 W VHF:	30 min	100 min	208.666-3000	X			
Bonner General Sandpoint, Idaho	LAT: 48 16.650 LONG 116 32.980 VHF:	30 min	1 hour	208.263.1441	X			
Sacred Heart Medical Spokane Washington	LAT: 47 38.500 LONG 117 24.800 VHF:	45 min	2 hour	509.474.3131	X			
HarborView Medical Seattle Washington	LAT: 47 36.238 LONG 122 19.461 VHF:	2 hours	5 hours		X		X	
8. MEDICAL EMERGENCY PROCEDURES								

HEALTH AND SAFETY MESSAGE- EXAMPLE

SAFETY starts with *YOU*

We are **ALL** accountable for **SAFE** behaviors

For Night Operations: August 15, 2018

INCIDENT: Copper Mtn. / Slide Creek	DATE: August 15, 2018	TIME: 0700
Major Hazards and Risks: <ul style="list-style-type: none">• SNAGS (green and dead trees weakened by the fire)• HOT!!!! BURNED OUT STUMP HOLES.• DEHYDRATION: Push the water into yourself, even when not thirsty.• DRIVING: Keep spaced out, lights on and keep your speed down.• OPERATIONS: Fallers are in working on the snags. Keep communication up and know the plan• EQUIPMENT: The heavy equipment is going to start working on opening the road. Know what the operational plan is and communicate it.		
<h3>Watch Out Situation</h3> <p>Situational awareness is what it's all about. Stay tuned in, dialed in and heads up through the night.</p> <p>Common denominators of Fire Behavior on Tragedy Fires: <i>On relatively small fires or deceptively quiet areas of large fires.</i></p> <p>Keep this in mind today:</p> <ul style="list-style-type: none">➤ Standard Firefighting Order: #7 Maintain prompt communications with your forces, your supervisor, and adjoining forces.➤ Falling operations. Follow fire order #7 to keep the communications open for safe operations.➤ Equipment operations. Follow fire order # 7 to keep everyone aware of the operations and where the equipment is working.	<h3>Our Safety Record continues to be On the right track. Keep up the good hard work.</h3> <p>The fire conditions have slowed down over the last couple of days. This not the time to stop paying attention. Keep your head on a swivel.</p> <ul style="list-style-type: none">• Keep up the good communication's• Take Care of yourself and your crew. There is still a lot of fire season left. <p>Is this Dragon just steeping or are we getting ahead of this? Keep up your Situational awareness up all the time.</p>  <p>1. FIRE NOT SCOUTED AND SIZED UP</p>	

THANKS

Safety Officer, Rob Shields

AMPLE

Incident Action Plan Safety Analysis				Identification of Hazards, Risk Assessment and Residual Risk						
HAZARDS	LIKELIHOOD	SEVERITY	RISK LEVEL	DELA	TANGO		LIKELIHOOD	SEVERITY	RISK LEVEL	RISK VS GAIN RISK ACCEPTABLE?
Snags	4	5	High	X	X		3	5	Medium	YES
Driving & Traffic	4	4	High	X	X		2	4	Medium	YES
Air Operations	4	5	High	X	X		2	5	Medium	YES
Wildlife Encounters	4	5	High	X	X		3	5	Medium	YES
Dehydration Heat Disorders	4	3	Medium	X	X		2	3	Low	YES
Fire Behavior	4	5	High	X	X		2	5	Medium	YES
Heavy Equipment	4	4	High	X	X		3	4	Medium	YES
Safety: Rob Shields				Date/ Time		8/15/2018 2000				

EXAMPLE

AIR OPERATIONS

Prepared By: Billie Washburn Date: 08/14/2018

1. INCIDENT NAME: Cooper Fire	2. OPS PERIOD DATE: 08/15/2018	START TIME: 08:00	END TIME: 20:00	SUNRISE	SUNSET: 07:59
3. REMARKS: 1 aircraft type to restricted short assigned to the Copper incident. 2 Additional aircraft can be order via CDC dispatch if needed. With the small organization please order any aerial needs from Billie Washburn (208)290-4662			4. Ready Alert Aircraft: Medivac-Type 3 order via CDC dispatch		5. TFR #: None

6. PERSONNEL	NAME	PHONE #	7. FREQUENCIES	AM	FM	8. FIXED-WING- Type/ Make-Model/ N#/ Base
AOBD			AIR/ AIR Forest IA	124.625		Air Tactical Group Supervisor Aircraft order by CDC dispatch-
ASGS			AIR/ AIR Border	126.700		
ATGS			AIR/GROUND		166.600	
ATGS (T)			A/G BC Silver		163.8900	
ATGS			Command		SEE IAP	
ATGS(T)			DECK			
HEBM	Billie Washburn	(208)290-4662	TOLC			

9. HELICOPTERS (Use Additional Sheets as Necessary)

FAA N #	Category/Type	Make/Model	Base	Available	Start	Remarks
6EC	Type 2 restricted	UH-1H	Boundry County Airport	08:30	08:00	On site Bonners Ferry Airports Buckets longline-
9HX			Sandpoint Airport	08:30	08:00	Buckets and longline on loan

11. Prepared by: Billie Washburn /s/ 08/14/2018

Copper Mountain Fire
IAP Map
8/14/2018

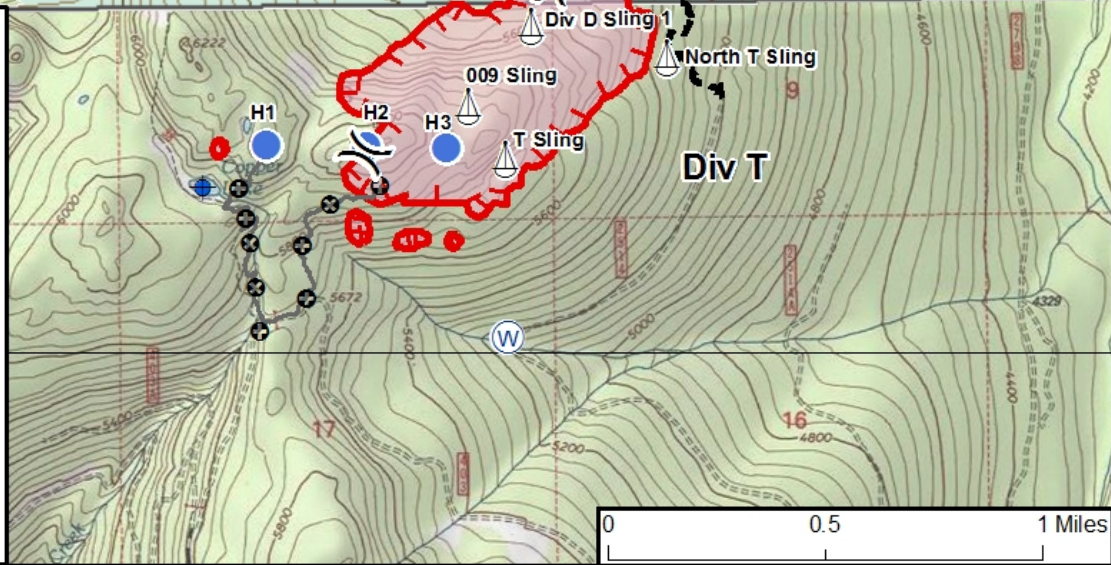
Map showing the Copper Mountain Fire perimeter and various divisions (Div D, Div T) and slings (Div D Sling 1, Div D Sling 2, 009 Sling, T Sling, North T Sling). The map includes a legend for wildfire perimeter, dip sites, helispots, sling sites, spot fires, water sources, division breaks, uncontrolled fire edges, planned fire lines, and P lines. The map is overlaid with a coordinate grid and a scale bar (0 to 1 mile).

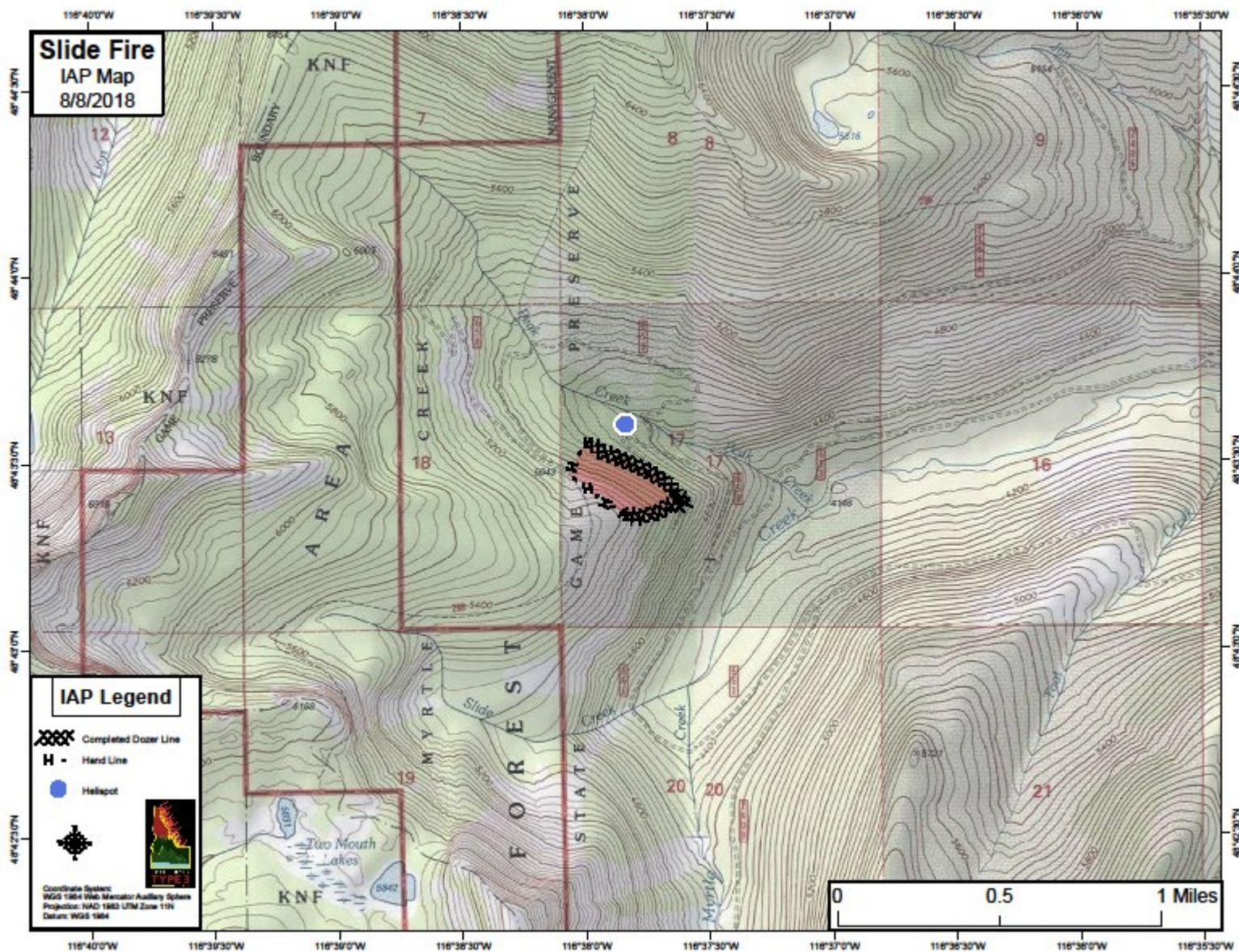
Legend:

- Wildfire Daily Fire Perimeter
- Dip Site
- Helispot
- Sling Site
- Spot Fire
- Water Source
- Division Break
- Uncontrolled Fire Edge
- Planned Fire Line
- P Line

Coordinate System:
WGS 1984 Web Mercator Auxiliary Sphere
Projection: NAD 1983 UTM Zone 11N
Datum: WGS 1984

Scale: 0 to 1 Miles





8 Line Medical Incident Report

Medical Incident Report FOR A NON-EMERGENCY INCIDENT, WORK THROUGH CHAIN OF COMMAND TO REPORT AND TRANSPORT INJURED PERSONNEL AS NECESSARY. FOR A MEDICAL EMERGENCY: IDENTIFY ON-SCENE INCIDENT COMMANDER BY NAME AND POSITION AND ANNOUNCE "MEDICAL EMERGENCY" TO INITIATE RESPONSE FROM IMT COMMUNICATIONS/DISPATCH.

Use the following items to communicate situation to communications/dispatch.

- CONTACT COMMUNICATIONS / DISPATCH** (Verify correct frequency prior to starting report) Ex: "Communications, Div. Alpha. Stand-by for Emergency Traffic."
- INCIDENT STATUS:** Provide incident summary (including number of patients) and command structure. .Ex: *"Communications, I have a Red priority patient, unconscious, struck by a falling tree. Requesting air ambulance to Forest Road 1 at (Lat. / Long.) This will be the Trout Meadow Medical, IC is TFLD Jones. EMT Smith is providing medical care."*

Severity of Emergency / Transport Priority	<input type="checkbox"/> RED / PRIORITY 1 Life or limb threatening injury or illness. Evacuation need is IMMEDIATE. Ex: Unconscious, difficulty breathing, bleeding severely, 2° – 3° burns more than 4 palm sizes, heat stroke, disoriented. <input type="checkbox"/> YELLOW / PRIORITY 2 Serious Injury or illness. Evacuation may be DELAYED if necessary. Ex: Significant trauma, unable to walk, 2° – 3° burns not more than 1-3 palm sizes. <input type="checkbox"/> GREEN / PRIORITY 3 Minor Injury or illness. Non-Emergency transport. Ex: Sprains, strains, minor heat-related illness.	
Nature of Injury or Illness & Mechanism of Injury		Brief Summary of Injury or Illness (Ex: Unconscious, Struck by Falling Tree)
Transport Request		Air Ambulance / ShortHaul/Hoist/ Ground Ambulance / Other
Patient Location		Descriptive Location & Lat. / Long. (WGS84)
Incident Name		Geographic Name + "Medical" (Ex: Trout Meadow Medical)
On-Scene Incident Commander		Name of on-scene IC of Incident within an Incident (Ex: TFLD Jones)
Patient Care		Name of Care Provider (Ex: EMT Smith)

- INITIAL PATIENT ASSESSMENT:** Complete this section for each patient as applicable (start with the most severe patient).

Patient Assessment: See IRPG page 106
Treatment:

- TRANSPORT PLAN:**

Evacuation Location (if different): (Descriptive Location (drop point, intersection, etc.) or Lat. / Long.) Patient's ETA to
Evacuation Location:
Helispot / Extraction Site Size and Hazards:

- ADDITIONAL RESOURCES / EQUIPMENT NEEDS:**

Example: Paramedic/EMT, Crews, Immobilization Devices, AED, Oxygen, Trauma Bag, IV/Fluid(s), Splints, Rope rescue, Wheeled litter, HAZMAT, Extrication
--

- COMMUNICATIONS:** Identify State Air/Ground EMS Frequencies and Hospital Contacts as applicable.

Function	Channel Name	Receive (RX)	Tone/ NAC*	Transmit (TX)	Tone/ NAC
Command					
Air-Ground					
Tactical					

- CONTINGENCY:** Considerations: If primary options fail, what actions can be implemented in conjunction with primary evacuation method? Be thinking ahead.

- ADDITIONAL INFORMATION:**

Updates/Changes, etc. REMEMBER: • Confirm ETA's of resources ordered. • Act according to your level of training. • Be Alert. Keep Calm. Think Clearly. Act Decisively

UNITLOG	1. Incident Name Slide Creek/Copper Mtn	2. Date Prepared	3. Time Prepared
4. Unit Name/Designators	5. Unit Leader (Name and Position) EXAMPLE		6. Operational Period
7. Personnel Roster Assigned			
Name	ICSPosition	Home Base	
8. Activity Log			
Time	Major Events		
9. Prepared by (Name and Position)			