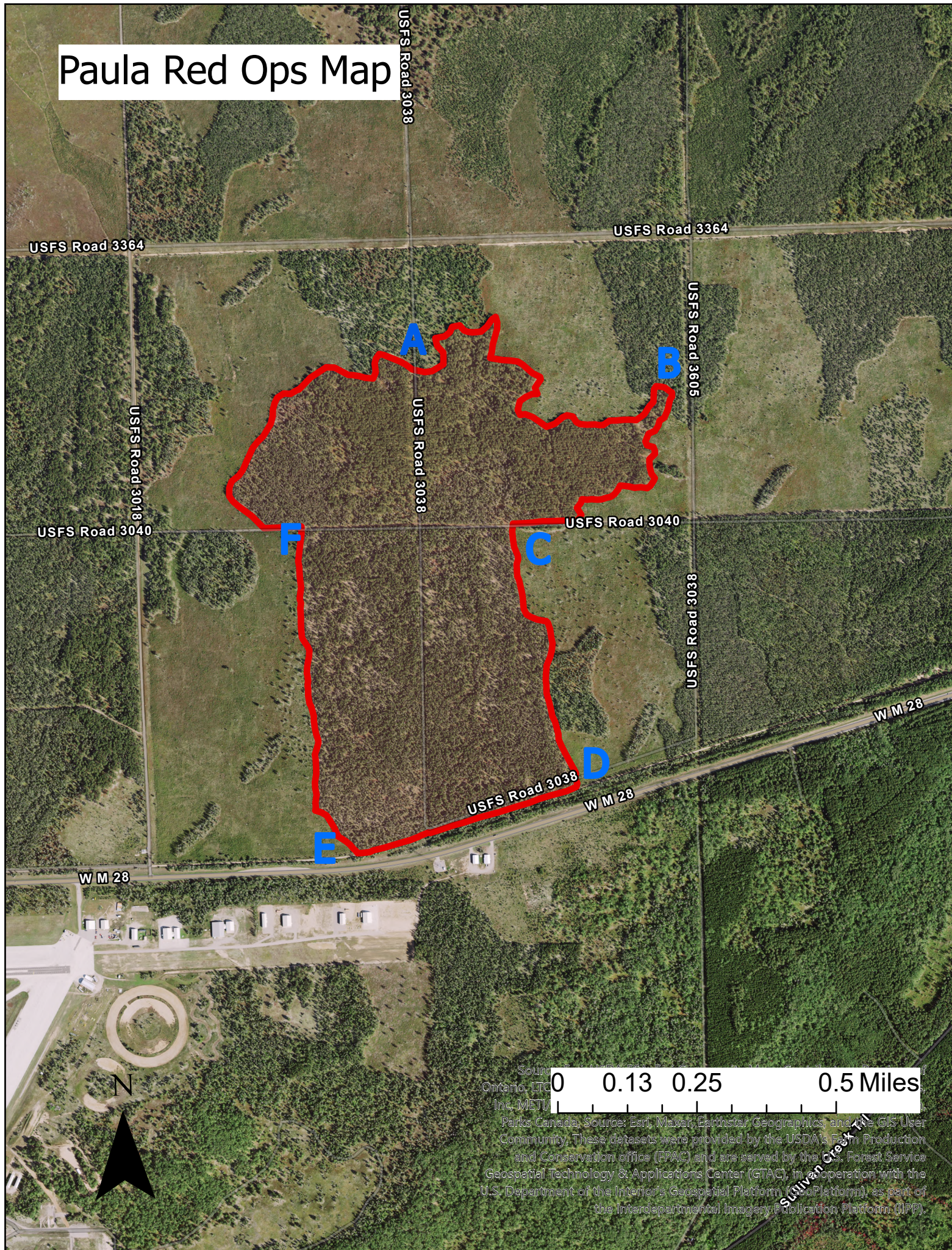


# Paula Red Ops Map



Source: Esri, Maxar, Earthstar Geographics, and the GIS User Community. These datasets were provided by the USDA's Farm Production and Conservation office (FPAC) and are served by the U.S. Forest Service Geospatial Technology & Applications Center (GTAC), in cooperation with the U.S. Department of the Interior's Geospatial Platform (GeoPlatform), as part of the Interdepartmental Imagery Publication Platform (IIP).