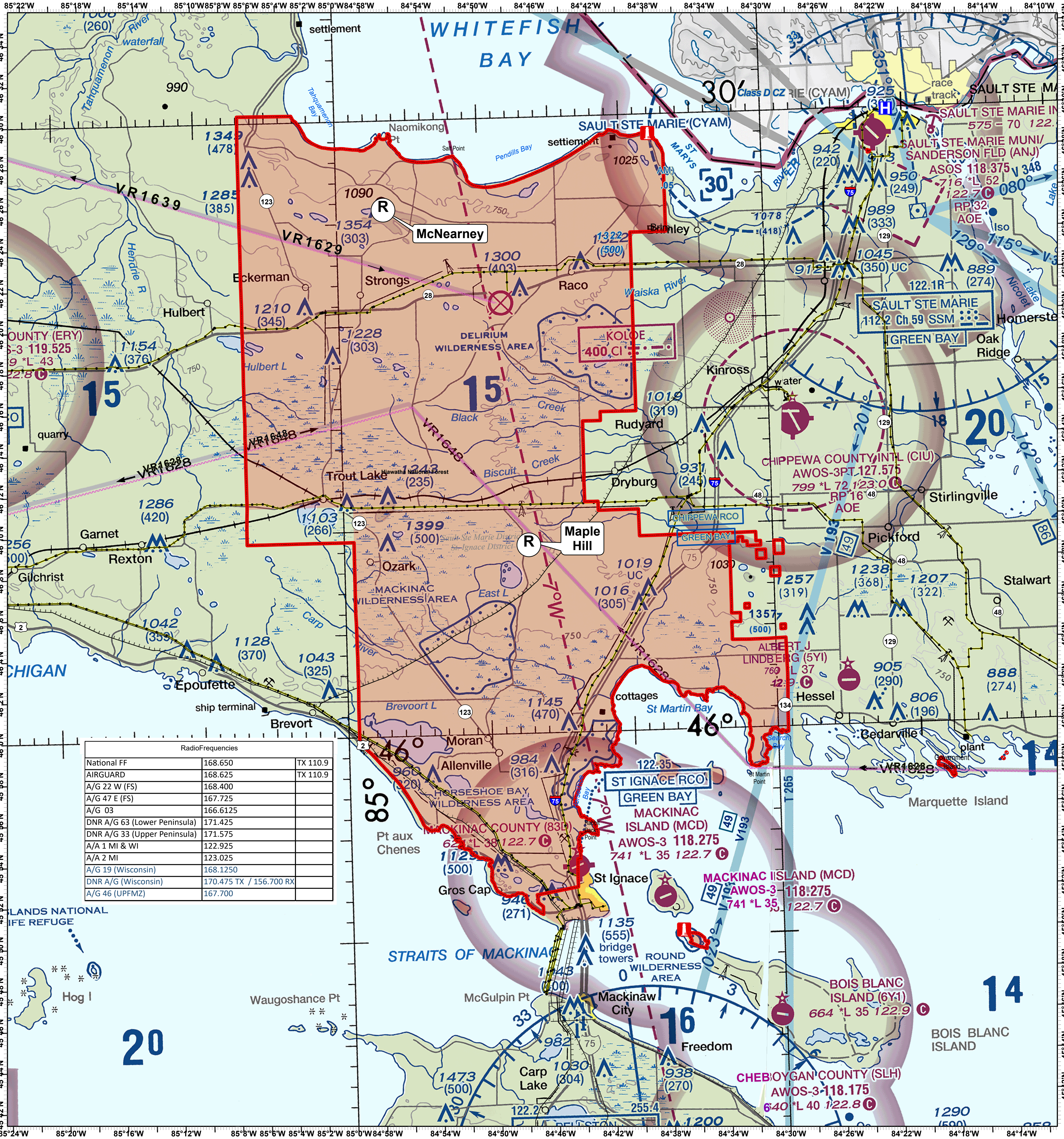


Controlled Unclassified Information Flight Hazard Map 2023 - UPFMZ East

MI-HIF East Zone

Green Bay and Lake Huron Sectionals



Radio Frequencies		
National FF	168.650	TX 110.9
AIRGUARD	168.625	TX 110.9
A/G 22 W (FS)	168.400	
A/G 47 E (FS)	167.725	
A/G 03	166.6125	
DNR A/G 63 (Lower Peninsula)	171.425	
DNR A/G 33 (Upper Peninsula)	171.575	
A/A 1 MI & WI	122.925	
A/A 2 MI	123.025	
A/G 19 (Wisconsin)	168.1250	
DNR A/G (Wisconsin)	170.475 TX / 156.700 RX	
A/G 46 (UPFMZ)	167.700	

LEGEND

Airports having Control Towers are shown in Blue, all others in Magenta. Consult Chart Supplement for details involving airport lighting, navigation aids, and services. All times are local. For additional information refer to the Chart User's Guide.

AIRPORTS

- Other than hard-surfaced runways
- Hard-surfaced runways 1500 ft. to 8069 ft. in length
- Hard-surfaced runways greater than 8069 ft. or some multiple runways less than 8069 ft.
- Open dirt within hard-surfaced runway configuration indicates approximate VOR, VOR-DME, DME or VORTAC location.
- All recognizable hard-surfaced runways, including those closed, are shown for visual identification. Airports may be public or private.

ADDITIONAL AIRPORT INFORMATION

- Private (Pvt) - Non-public use having emergency or landmark value
- Military - Other than hard-surfaced; all military airports are identified by abbreviations AFB, NAS, AAF, etc.
- Helipad Selected
- Unverfied
- Abandoned - paved having landmark value, 3000 ft. or greater
- Ultrapark Flight Park Selected

AIRPORT DATA

Box indicates FAR 93, Special Air Traffic Rules & Airport Traffic Patterns.

Runways with Flight Traffic Patterns (public use):

- *RP - Special conditions exist - see Supplement.
- WX CAM - Weather Camera (AK)
- FSS - Flight Service Station
- AOE - Airport of Entry
- NO SVFR - Fixed-wing special VFR flight is prohibited.
- CT - 118.3 - Control Tower (CT) - primary frequency
- * - Star indicates operation part-time. See tower frequencies tabulation for hours of operation.
- CT - Follows the Common Traffic Advisory Frequency (CTAF)
- ATIS 123.8 - Automatic Terminal Information Service
- AFIS 135.2 - Automatic Flight Information Service (AK)
- ASOS/AWOS 135.42 - Automated Surface Weather Observing System (shown where full-time ATIS not available). Some ASOS/AWOS facilities may not be located at airports.
- UNICOM - Aeronautical advisory station
- VFR Advy - VFR Advisory Service shown where full-time ATIS not available and frequency is other than primary CT frequency.
- 285 - Elevation in feet
- L - Lighting in operation Sunset to Sunrise
- L - Lighting limitations exist; refer to Supplement.
- 72 - Length of longest runway in hundreds of feet; usable length may be less.

When information is lacking, the respective character is replaced by a dash. Lighting codes refer to runway edge lights and may not represent the longest runway or full length lighting.

RADIO AIDS TO NAVIGATION

- VHF OMNI RANGE (VOR)
- VOR-DME
- Non-Directional Radio Beacon (NDB)
- VORTAC
- Other facilities, i.e., FSS Outlet, RCO, WX CAM (AK) (see Supplement), etc.
- NDB - DME

OBSTRUCTIONS

- 1000 ft. and higher AGL
- Above 200 ft. & below 1000 ft. AGL
- Group Obstruction
- Obstruction with high-intensity lights may operate part-time
- Wind Turbine
- Wind Turbine Farm
- Elevation of the top above mean sea level
- Height above ground
- Under construction or in repair; operation and elevation advisory
- NOTICE: Guy wires may extend outward from structures.

MISCELLANEOUS

- STADIUM
- Space Launch Activity Area
- A - Aerobically Practice Area
- G - Glider Operations
- H - Hang Glider Activity
- U - Unmanned Aircraft Activity
- UA - Unmanned Aircraft Activity
- Parachute Jumping Area (see Supplement)
- Marine Light
- VPXYZ - VFR Waypoints
- NAME (VPXYZ)

TOPOGRAPHIC INFORMATION

- Power Transmission Line
- Mountain Pass
- 7180' (Elevation of Pass)
- Pass symbol does not indicate a recommended route or direction of flight and pass elevation does not indicate a recommended clearance altitude. Hazardous flight conditions may exist within and near mountain passes.

AIRPORT TRAFFIC SERVICE AND AIRSPACE INFORMATION

Only the controlled and reserved airspace effective below 18,000 ft. MSL are shown.

- Class B Airspace
- Class C Airspace (Mode C - see FAR 91.215(AIM))
- Class D Airspace
- Ceiling of Class D Airspace in hundreds of feet (A minus ceiling value indicates surface up to but not including that value).
- Class E (stc) Airspace
- Class E Airspace with floor 700 ft. above surface that laterally abuts Class G Airspace.
- CLASS G

COMMUNICATION BOXES

Underline indicates no voice on frequency.

Crosshatch indicates shutdown status.

- * - Operates less than continuous or On-Request.
- o - ASOS/AWOS
- R - Receive only

Heavy line box indicates Flight Service Station (FSS). Frequencies 122.2 and 255.4 (Continuous U.S.), 121.5, 122.2, 243.0 and 255.4 (Alaska), and 121.5, 128.7, and 243.0 (Canada), are available at many FSSs and are not shown above boxes. All other frequencies are shown.

Frequencies above this line box are removed to NAVD 83. Other FSS frequencies providing voice communication may be available as determined by altitude and terrain. Consult Supplement for complete information.

The frequencies on this map are Unclassified but Sensitive and are not releasable under the Freedom of Information Act

Updated on Feb 22, 2023
Path: T:\FS\WFS\Hawthorn\Programs\S100\Fire\GIS\Dispatch\Map\FlightHazard\Map\FlightHazardMap-ArcPro.srx

Controlled Unclassified Information