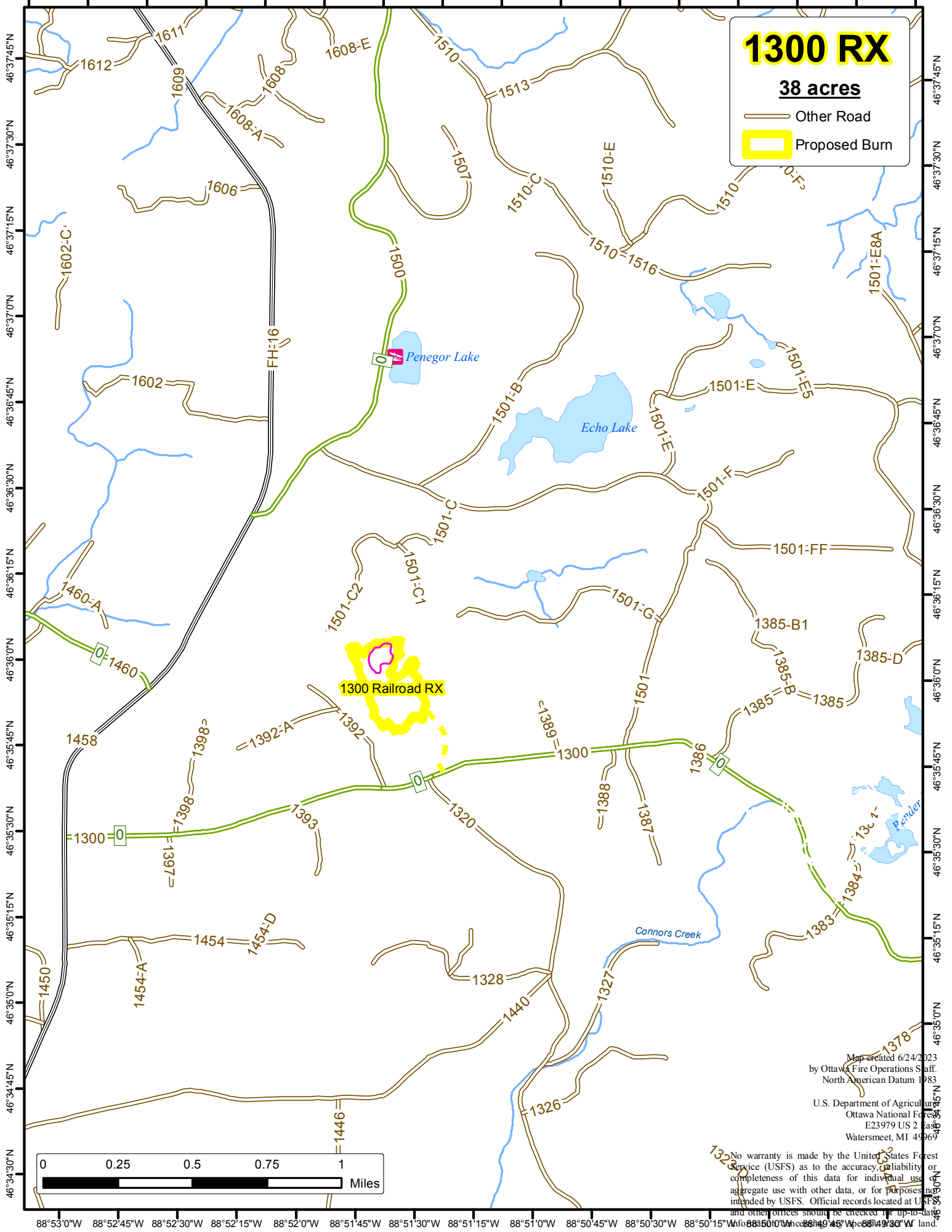


88°53'15"W 88°53'0"W 88°52'45"W 88°52'30"W 88°52'15"W 88°52'0"W 88°51'45"W 88°51'30"W 88°51'15"W 88°51'0"W 88°50'45"W 88°50'30"W 88°50'15"W 88°50'0"W 88°49'45"W 88°49'30"W



1300 RX
38 acres
 — Other Road
 [Yellow Outline] Proposed Burn

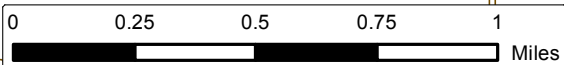
1300 Railroad RX

Penegor Lake

Echo Lake

Connors Creek

Map created 6/24/2023
 by Ottawa Fire Operations Staff,
 North American Datum 1983
 U.S. Department of Agriculture
 Ottawa National Forest
 E23979 US 2 Basemap
 Watersmeet, MI 49969



No warranty is made by the United States Forest Service (USFS) as to the accuracy, reliability, or completeness of this data for individual use, aggregate use with other data, or for purposes not intended by USFS. Official records located at USFS and other offices should be checked for up-to-date information on current land ownership.

88°53'0"W 88°52'45"W 88°52'30"W 88°52'15"W 88°52'0"W 88°51'45"W 88°51'30"W 88°51'15"W 88°51'0"W 88°50'45"W 88°50'30"W 88°50'15"W 88°50'0"W 88°49'45"W 88°49'30"W