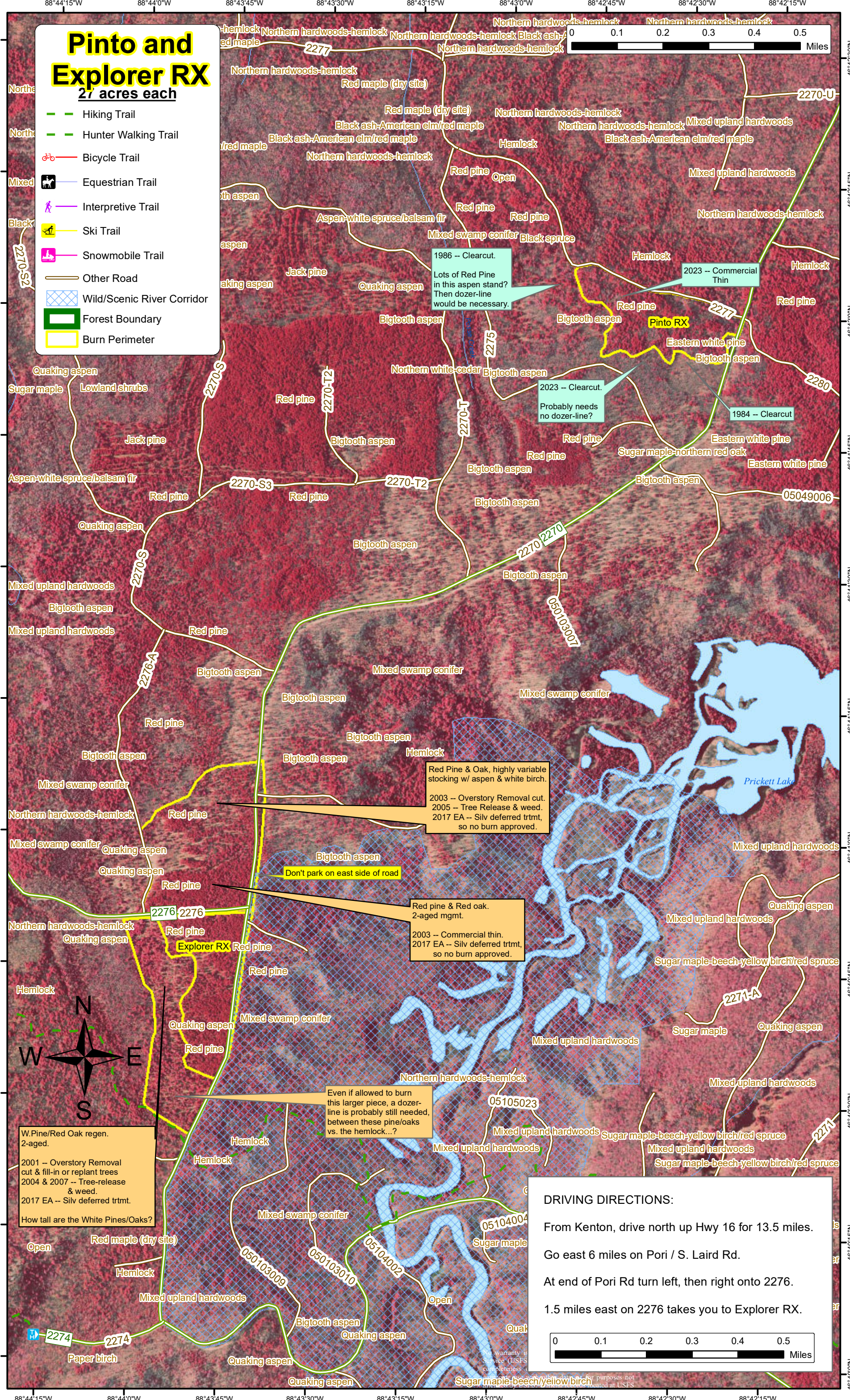
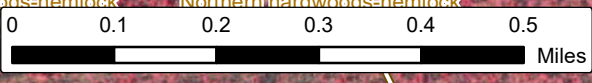


Pinto and Explorer RX

27 acres each

- Hiking Trail
- Hunter Walking Trail
- Bicycle Trail
- Equestrian Trail
- Interpretive Trail
- Ski Trail
- Snowmobile Trail
- Other Road
- Wild/Scenic River Corridor
- Forest Boundary
- Burn Perimeter



1986 -- Clearcut.
Lots of Red Pine in this aspen stand? Then dozer-line would be necessary.

2023 -- Commercial Thin

2023 -- Clearcut.
Probably needs no dozer-line?

1984 -- Clearcut

Red Pine & Oak, highly variable stocking w/ aspen & white birch.
2003 -- Overstory Removal cut.
2005 -- Tree Release & weed.
2017 EA -- Silv deferred trmt, so no burn approved.

Don't park on east side of road

Red pine & Red oak. 2-aged mgmt.
2003 -- Commercial thin.
2017 EA -- Silv deferred trmt, so no burn approved.

Even if allowed to burn this larger piece, a dozer-line is probably still needed, between these pine/oaks vs. the hemlock...?

W.Pine/Red Oak regen. 2-aged.
2001 -- Overstory Removal cut & fill-in or replant trees
2004 & 2007 -- Tree-release & weed.
2017 EA -- Silv deferred trmt.
How tall are the White Pines/Oaks?

DRIVING DIRECTIONS:

From Kenton, drive north up Hwy 16 for 13.5 miles.
Go east 6 miles on Pori / S. Laird Rd.
At end of Pori Rd turn left, then right onto 2276.
1.5 miles east on 2276 takes you to Explorer RX.

