

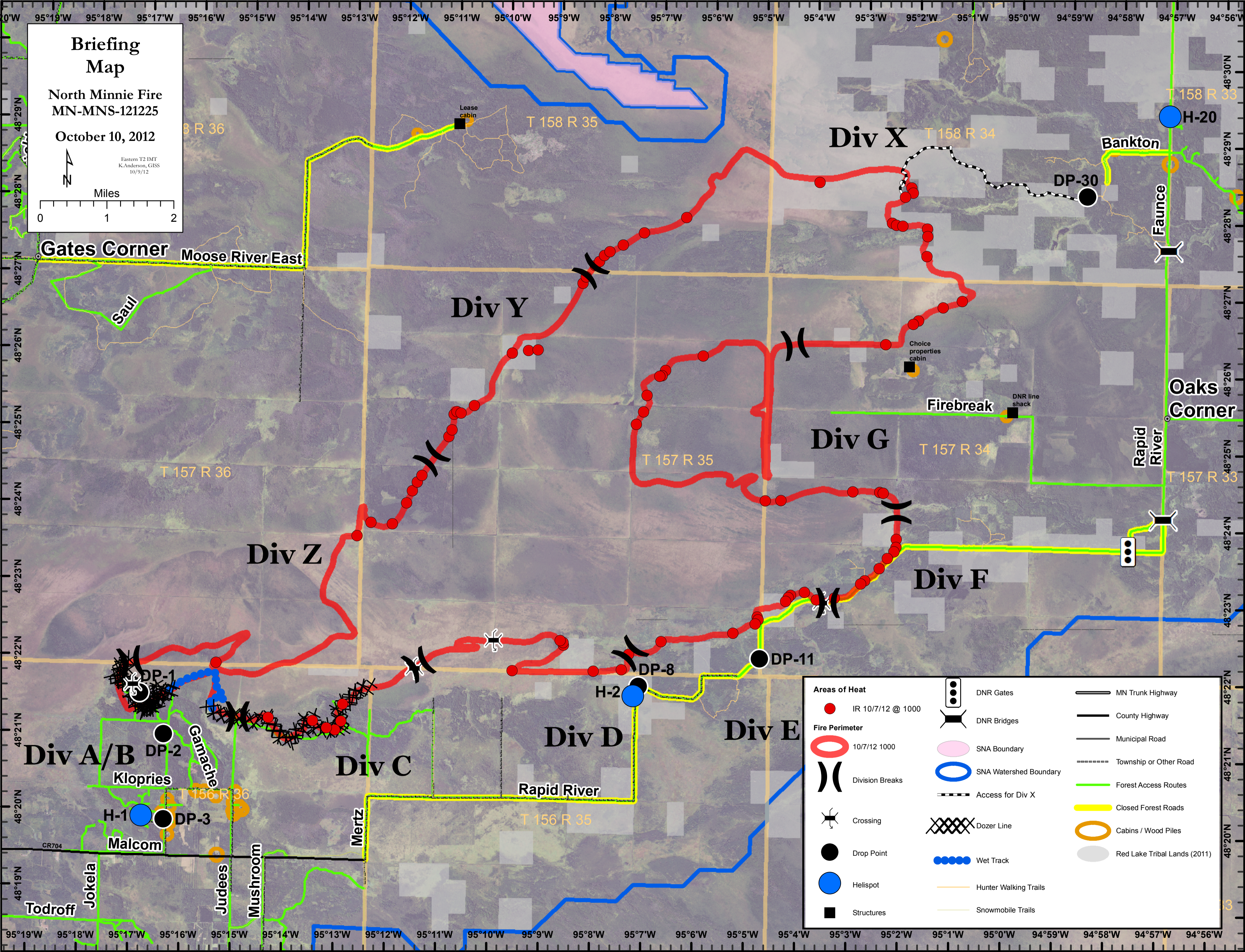
**Briefing Map**

North Minnie Fire  
MN-MNS-121225

October 10, 2012

Eastern T2 IMT  
K.Anderson, GISS  
10/9/12

Miles  
0 1 2



|                       |                        |                       |                              |
|-----------------------|------------------------|-----------------------|------------------------------|
| <b>Areas of Heat</b>  | IR 10/7/12 @ 1000      | DNR Gates             | MN Trunk Highway             |
| <b>Fire Perimeter</b> | 10/7/12 1000           | DNR Bridges           | County Highway               |
| Division Breaks       | SNA Boundary           | Municipal Road        | Township or Other Road       |
| Crossing              | SNA Watershed Boundary | Forest Access Routes  | Closed Forest Roads          |
| Drop Point            | Access for Div X       | Dozer Line            | Cabins / Wood Piles          |
| Helispot              | Wet Track              | Hunter Walking Trails | Red Lake Tribal Lands (2011) |
| Structures            | Snowmobile Trails      |                       |                              |