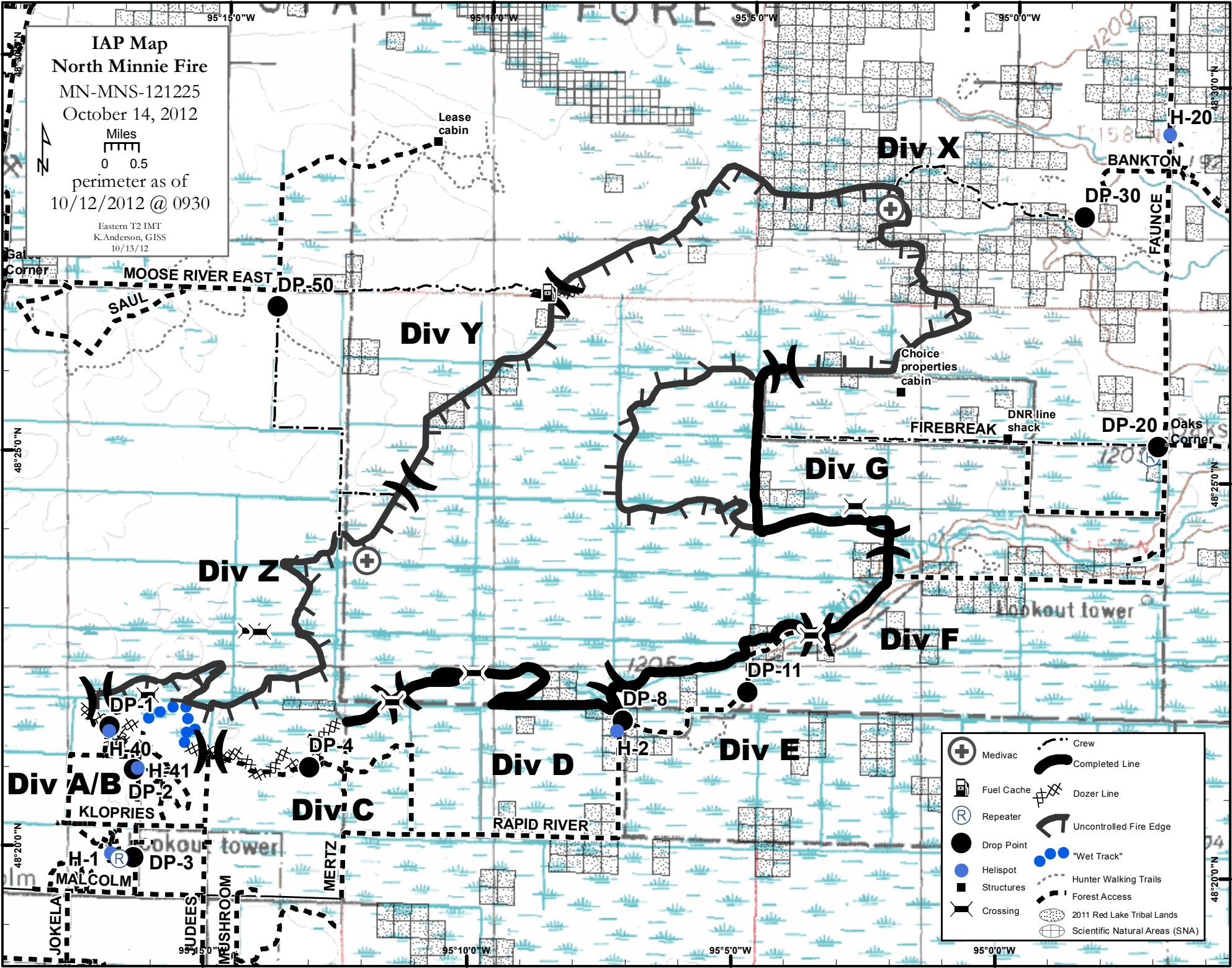


IAP Map
North Minnie Fire
 MN-MNS-121225
 October 14, 2012

Miles
 0 0.5
 perimeter as of
 10/12/2012 @ 0930

Eastern T2 IMT
 K.Anderson, GIS
 10/13/12



- Medivac
- Fuel Cache
- Repeater
- Drop Point
- Helispot
- Structures
- Crossing
- Crew
- Completed Line
- Dozer Line
- Uncontrolled Fire Edge
- "Wet Track"
- Hunter Walking Trails
- Forest Access
- 2011 Red Lake Tribal Lands
- Scientific Natural Areas (SNA)