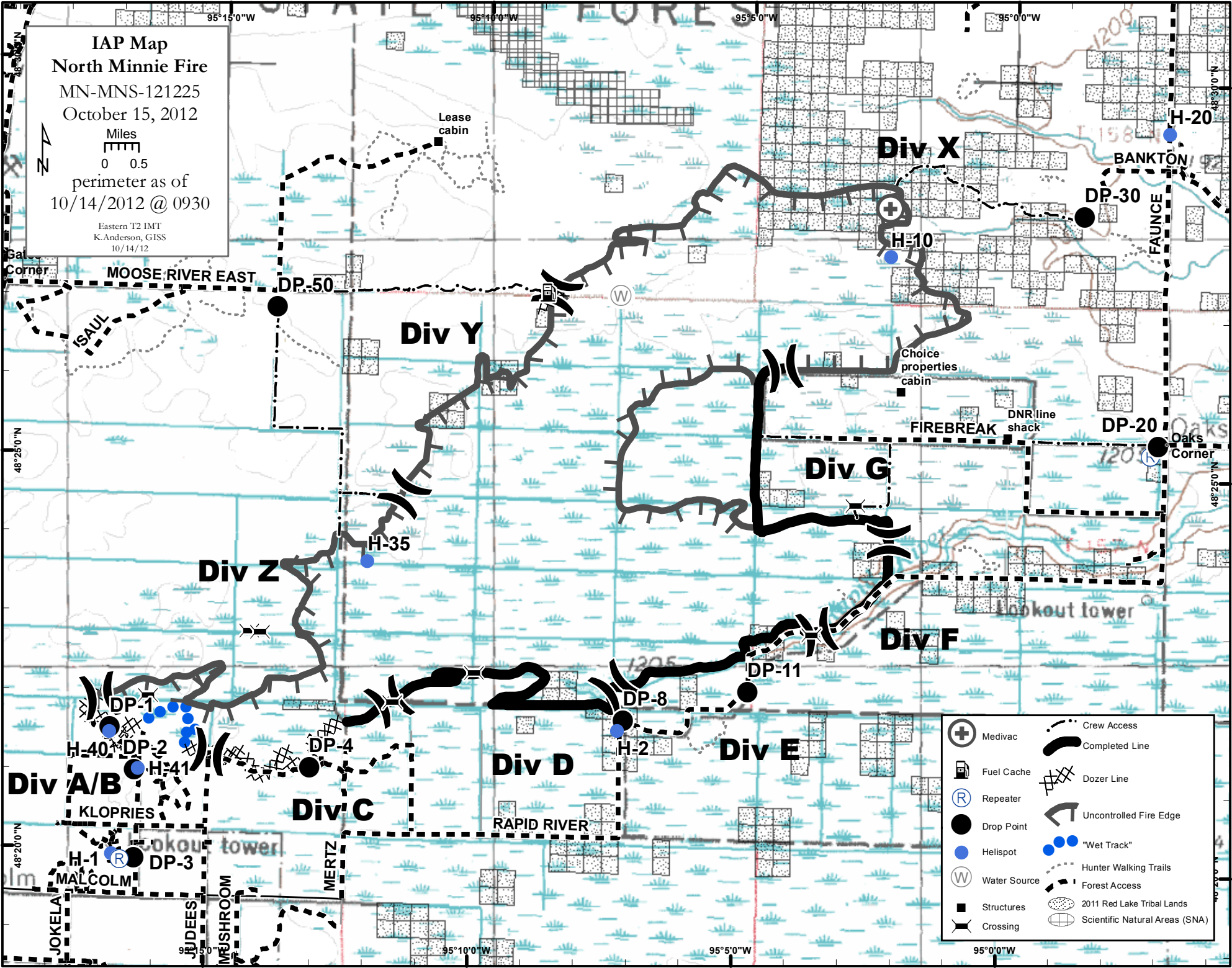


**IAP Map**  
**North Minnie Fire**  
 MN-MNS-121225  
 October 15, 2012

Miles  
 0 0.5

perimeter as of  
 10/14/2012 @ 0930

Eastern T2 IMT  
 K.Anderson, GISS  
 10/14/12



- Medivac
- Fuel Cache
- Repeater
- Drop Point
- Helispot
- Water Source
- Structures
- Crossing
- Crew Access
- Completed Line
- Dozer Line
- Uncontrolled Fire Edge
- "Wet Track"
- Hunter Walking Trails
- Forest Access
- 2011 Red Lake Tribal Lands
- Scientific Natural Areas (SNA)