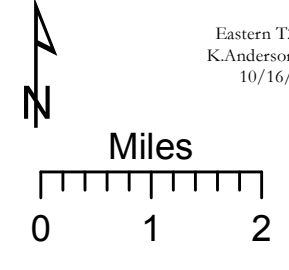


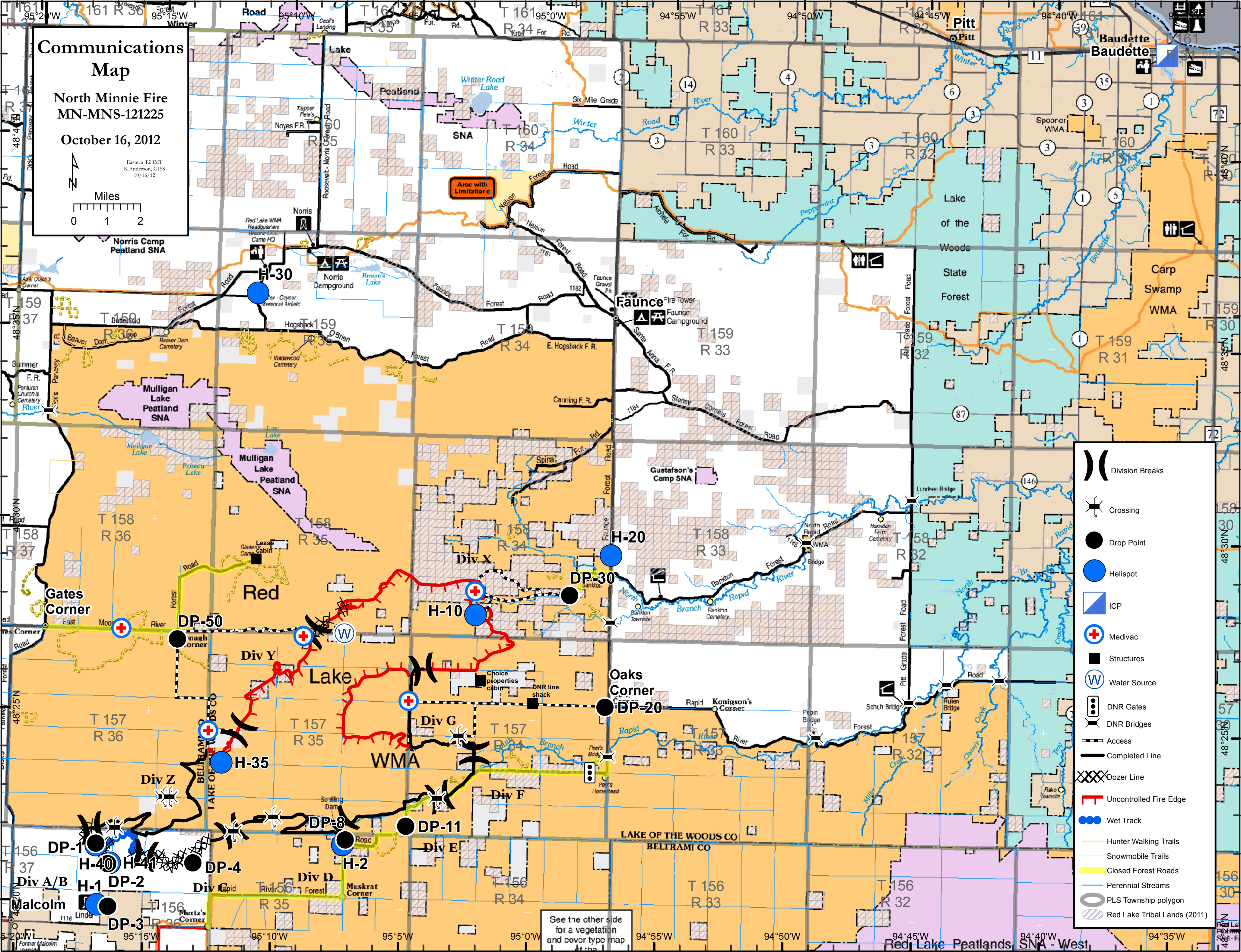
# Communications Map

North Minnie Fire  
MN-MNS-121225

October 16, 2012



Eastern T2 IMT  
K.Anderson, GIS  
10/16/12



- ( ) Division Breaks
- ✂ Crossing
- Drop Point
- Helispot
- ▭ ICP
- ⊕ Medivac
- Structures
- ⊕ Water Source
- ⊕ DNR Gates
- ⊕ DNR Bridges
- Access
- Completed Line
- XXXX Dozer Line
- Uncontrolled Fire Edge
- Wet Track
- Hunter Walking Trails
- Snowmobile Trails
- Closed Forest Roads
- Perennial Streams
- PLS Township polygon
- ▨ Red Lake Tribal Lands (2011)

See the other side for a vegetation and cover type map