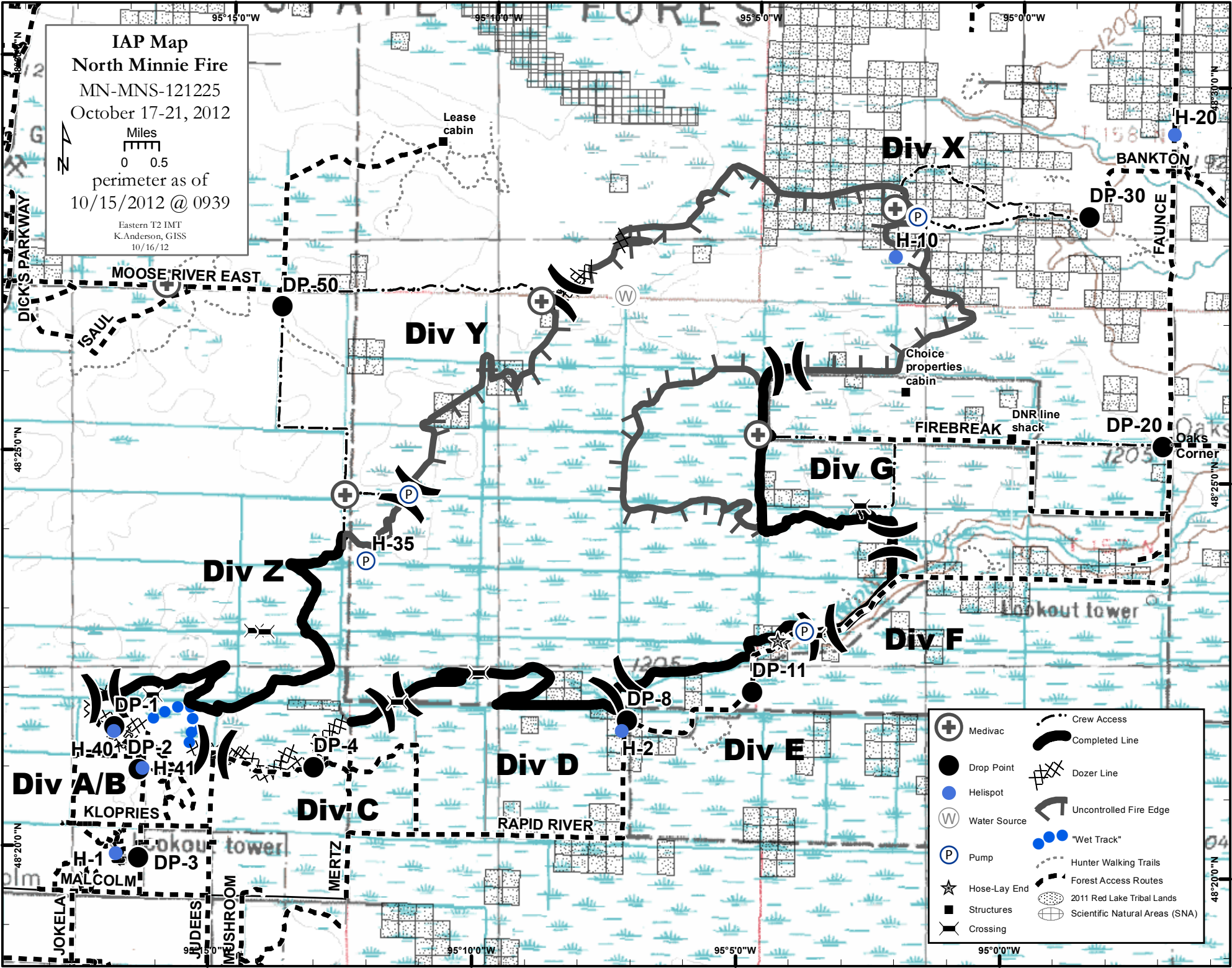


IAP Map
North Minnie Fire
 MN-MNS-121225
 October 17-21, 2012

Miles
 0 0.5
 perimeter as of
 10/15/2012 @ 0939

Eastern T2 IMT
 K.Anderson, GISS
 10/16/12



- | | | | |
|--|--------------|--|--------------------------------|
| | Medivac | | Crew Access |
| | Drop Point | | Completed Line |
| | Helispot | | Dozer Line |
| | Water Source | | Uncontrolled Fire Edge |
| | Pump | | "Wet Track" |
| | Hose-Lay End | | Hunter Walking Trails |
| | Structures | | Forest Access Routes |
| | Crossing | | 2011 Red Lake Tribal Lands |
| | | | Scientific Natural Areas (SNA) |