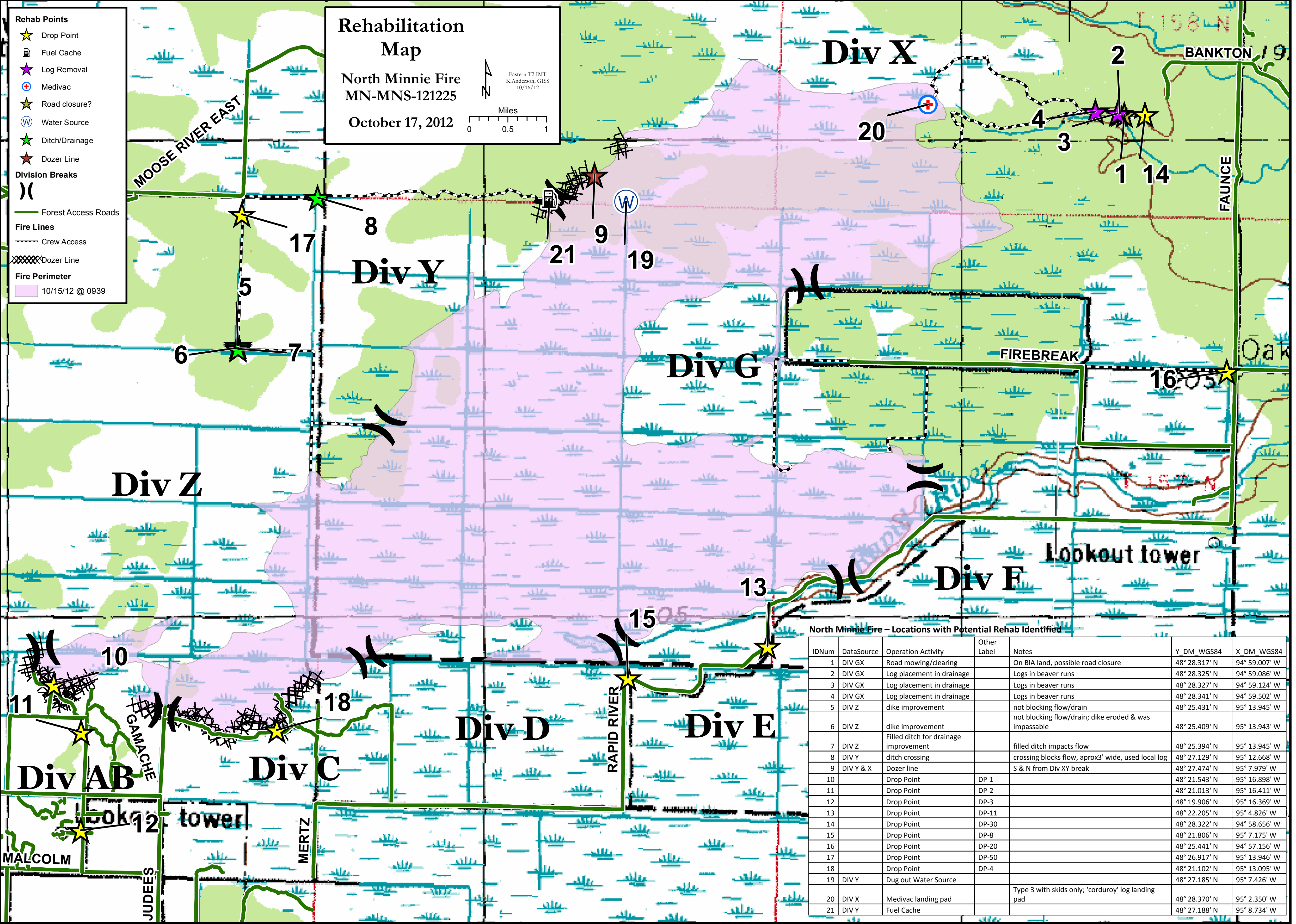


Rehabilitation Map
 North Minnie Fire
 MN-MNS-121225
 October 17, 2012

Eastern T2 IMT
 K.Anderson, GIS
 10/16/12

Miles
 0 0.5 1

- Rehab Points**
- ★ Drop Point
 - ⛛ Fuel Cache
 - ★ Log Removal
 - ⊕ Medivac
 - ★ Road closure?
 - Ⓜ Water Source
 - ★ Ditch/Drainage
 - ★ Dozer Line
- Division Breaks**
-) Forest Access Roads
- Fire Lines**
- - - Crew Access
 - XXXXX Dozer Line
- Fire Perimeter**
- 10/15/12 @ 0939



North Minnie Fire – Locations with Potential Rehab Identified

IDNum	DataSource	Operation Activity	Other Label	Notes	Y_DM WGS84	X_DM WGS84
1	DIV GX	Road mowing/clearing		On BIA land, possible road closure	48° 28.317' N	94° 59.007' W
2	DIV GX	Log placement in drainage		Logs in beaver runs	48° 28.325' N	94° 59.086' W
3	DIV GX	Log placement in drainage		Logs in beaver runs	48° 28.327' N	94° 59.124' W
4	DIV GX	Log placement in drainage		Logs in beaver runs	48° 28.341' N	94° 59.502' W
5	DIV Z	dike improvement		not blocking flow/drain	48° 25.431' N	95° 13.945' W
6	DIV Z	dike improvement		not blocking flow/drain; dike eroded & was impassable	48° 25.409' N	95° 13.943' W
7	DIV Z	Filled ditch for drainage improvement		filled ditch impacts flow	48° 25.394' N	95° 13.945' W
8	DIV Y	ditch crossing		crossing blocks flow, aprox3' wide, used local log	48° 27.129' N	95° 12.668' W
9	DIV Y & X	Dozer line		S & N from Div XY break	48° 27.474' N	95° 7.979' W
10		Drop Point	DP-1		48° 21.543' N	95° 16.898' W
11		Drop Point	DP-2		48° 21.013' N	95° 16.411' W
12		Drop Point	DP-3		48° 19.906' N	95° 16.369' W
13		Drop Point	DP-11		48° 22.205' N	95° 4.826' W
14		Drop Point	DP-30		48° 28.322' N	94° 58.656' W
15		Drop Point	DP-8		48° 21.806' N	95° 7.175' W
16		Drop Point	DP-20		48° 25.441' N	94° 57.156' W
17		Drop Point	DP-50		48° 26.917' N	95° 13.946' W
18		Drop Point	DP-4		48° 21.102' N	95° 13.095' W
19	DIV Y	Dug out Water Source			48° 27.185' N	95° 7.426' W
20	DIV X	Medivac landing pad		Type 3 with skids only; 'corduroy' log landing pad	48° 28.370' N	95° 2.350' W
21	DIV Y	Fuel Cache			48° 27.188' N	95° 8.734' W