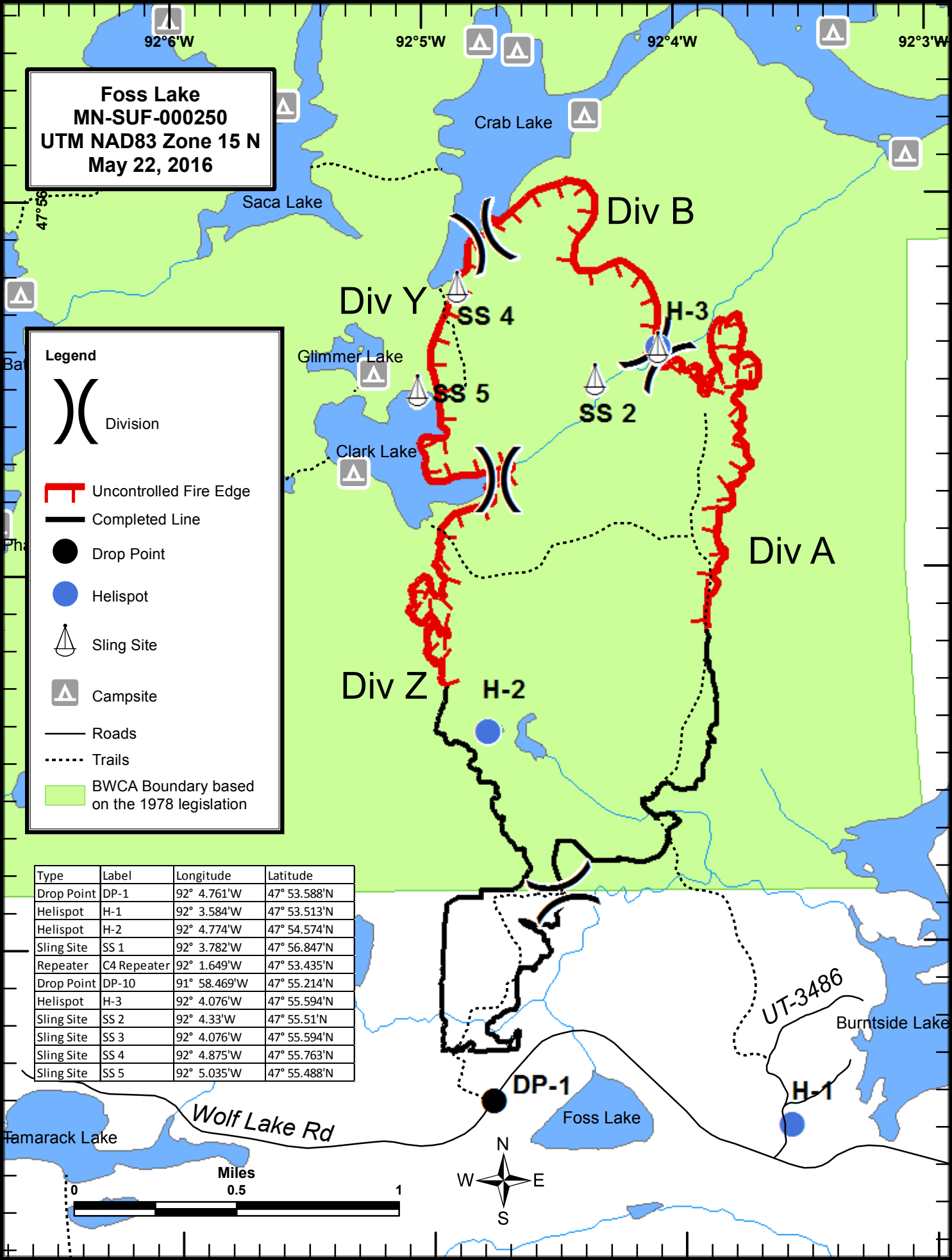


Foss Lake
MN-SUF-000250
UTM NAD83 Zone 15 N
May 22, 2016

Legend

- Division
- Uncontrolled Fire Edge
- Completed Line
- Drop Point
- Helispot
- Sling Site
- Campsite
- Roads
- Trails
- BWCA Boundary based on the 1978 legislation

| Type | Label | Longitude | Latitude |
|------------|-------------|--------------|--------------|
| Drop Point | DP-1 | 92° 4.761'W | 47° 53.588'N |
| Helispot | H-1 | 92° 3.584'W | 47° 53.513'N |
| Helispot | H-2 | 92° 4.774'W | 47° 54.574'N |
| Sling Site | SS 1 | 92° 3.782'W | 47° 56.847'N |
| Repeater | C4 Repeater | 92° 1.649'W | 47° 53.435'N |
| Drop Point | DP-10 | 91° 58.469'W | 47° 55.214'N |
| Helispot | H-3 | 92° 4.076'W | 47° 55.594'N |
| Sling Site | SS 2 | 92° 4.33'W | 47° 55.51'N |
| Sling Site | SS 3 | 92° 4.076'W | 47° 55.594'N |
| Sling Site | SS 4 | 92° 4.875'W | 47° 55.763'N |
| Sling Site | SS 5 | 92° 5.035'W | 47° 55.488'N |



UT-3486

Tamarack Lake

Wolf Lake Rd

Foss Lake

Burntside Lake