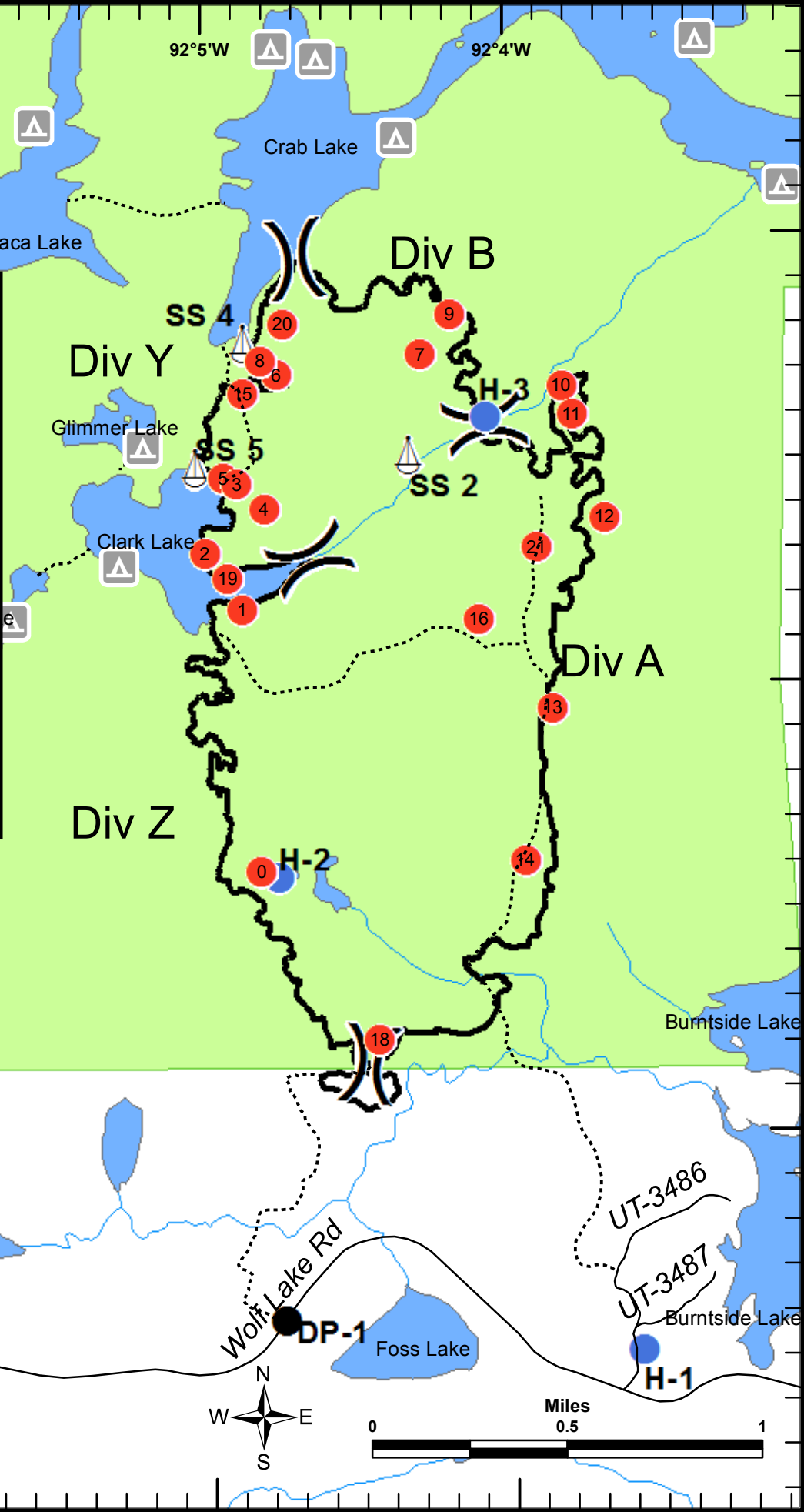


Foss Lake
MN-SUF-000250
UTM NAD83 Zone 15 N
May 27, 2016

Legend

- Division Break
- Drop Point
- Helispot
- Hot Spot
- Sling Site
- Completed Line
- Campsite
- Roads
- Trails
- BWCA Boundary based on the 1978 legislation



Type	Label	Latitude	Longitude
Drop Point	DP-1	47° 53.588' N	92° 4.761' W
Drop Point	DP-10	47° 55.214' N	91° 58.469' W
Helispot	H-1	47° 53.513' N	92° 3.584' W
Helispot	H-2	47° 54.574' N	92° 4.774' W
Helispot	H-3	47° 55.594' N	92° 4.076' W
Hot Spot	0	47° 54.587' N	92° 4.831' W
Hot Spot	1	47° 55.169' N	92° 4.886' W
Hot Spot	2	47° 55.295' N	92° 5.007' W
Hot Spot	3	47° 55.449' N	92° 4.899' W
Hot Spot	4	47° 55.393' N	92° 4.810' W
Hot Spot	5	47° 55.464' N	92° 4.943' W
Hot Spot	6	47° 55.691' N	92° 4.763' W
Hot Spot	7	47° 55.735' N	92° 4.287' W
Hot Spot	8	47° 55.724' N	92° 4.817' W
Hot Spot	9	47° 55.824' N	92° 4.187' W
Hot Spot	10	47° 55.663' N	92° 3.821' W
Hot Spot	11	47° 55.598' N	92° 3.787' W
Hot Spot	12	47° 55.368' N	92° 3.680' W
Hot Spot	13	47° 54.945' N	92° 3.860' W
Hot Spot	14	47° 54.608' N	92° 3.957' W
Hot Spot	15	47° 55.652' N	92° 4.875' W
Hot Spot	16	47° 55.144' N	92° 4.101' W
Hot Spot	18	47° 54.209' N	92° 4.445' W
Hot Spot	19	47° 55.239' N	92° 4.931' W
Hot Spot	20	47° 55.805' N	92° 4.740' W
Hot Spot	21	47° 55.303' N	92° 3.908' W
Repeater	C4	47° 53.435' N	92° 1.649' W
Sling Site	SS 1	47° 56.847' N	92° 3.782' W
Sling Site	SS 2	47° 55.510' N	92° 4.330' W
Sling Site	SS 4	47° 55.763' N	92° 4.875' W
Sling Site	SS 5	47° 55.488' N	92° 5.035' W

Wolf Lake Rd

Foss Lake

Burntside Lake

UT-3486

UT-3487

Miles 0 0.5 1