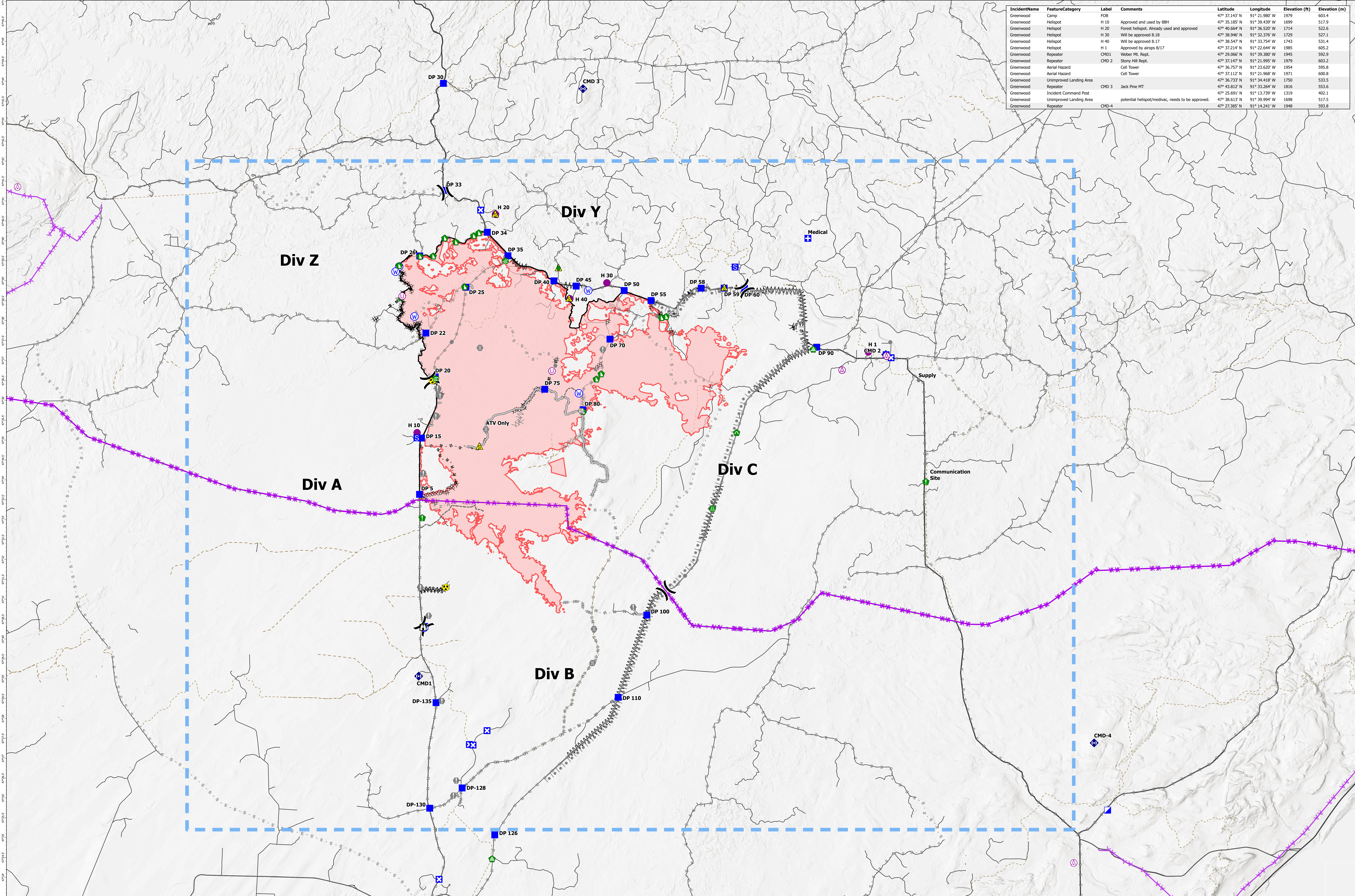


IncidentName	FeatureCategory	Label	Comments	Latitude	Longitude	Elevation (ft)	Elevation (m)
Greenwood	Camp	FOB		47° 37.143' N	91° 21.980' W	1979	602.4
Greenwood	Helispot	H 10	Approved and used by 88H	47° 35.185' N	91° 39.439' W	1699	517.9
Greenwood	Helispot	H 20	Forest helispot. Already used and approved	47° 40.664' N	91° 36.520' W	1714	522.6
Greenwood	Helispot	H 30	Will be approved 8.18	47° 38.946' N	91° 32.376' W	1729	527.1
Greenwood	Helispot	H 40	Will be approved 8.17	47° 38.547' N	91° 33.754' W	1743	531.4
Greenwood	Helispot	H 1	Approved by airops 8/17	47° 37.214' N	91° 22.644' W	1985	605.2
Greenwood	Repeater	CMD1	Welder Mt. Rept.	47° 29.066' N	91° 39.380' W	1945	592.9
Greenwood	Repeater	CMD 2	Stony Hill Rept.	47° 37.147' N	91° 21.995' W	1979	603.2
Greenwood	Aerial Hazard	Cell Tower	Cell Tower	47° 36.757' N	91° 23.620' W	1954	595.8
Greenwood	Aerial Hazard	Cell Tower	Cell Tower	47° 37.112' N	91° 21.968' W	1971	600.8
Greenwood	Unimproved Landing Area			47° 36.733' N	91° 34.418' W	1750	533.5
Greenwood	Repeater	CMD 3	Jack Pine MT	47° 43.812' N	91° 33.256' W	1816	553.6
Greenwood	Incident Command Post			47° 25.691' N	91° 13.739' W	1319	402.1
Greenwood	Unimproved Landing Area		potential helispot/medvac, needs to be approved.	47° 38.613' N	91° 39.994' W	1698	517.5
Greenwood	Repeater	CMD-4		47° 27.385' N	91° 14.241' W	1948	593.8



## Greenwood MN-SUF-000411

Fire Perimeter as of  
09/02/2021 0200 hrs  
26,089 Acres

- Aerial Hazard
- Helispot
- Unimproved Landing Area
- ⌘ Division Break
- Medical
- Incident Command Post
- Drop Point
- Closure
- Camp
- Staging Area
- Lookout
- Value at Risk
- Other
- Gate
- Bridge
- Water Development or Draft Site
- Road Repair
- Resource Location
- Repair Point
- Landing or Log Deck
- Dozer Push
- Culvert
- Safety Zone
- Hazard
- Water Source
- ⊗ Completed Dozer Line
- ⊗ Completed Fuel Break
- ⊗ Completed Hand Line
- ⊗ Completed Mixed Construction Line
- ⊗ Completed Road as Line
- ⊗ Planned Burnout
- ⊗ Planned Dozer Line
- ⊗ Planned Fuel Break
- ⊗ Planned Hand Line
- ⊗ Planned Mixed Construction Line
- ⊗ Planned Road as Line
- ⊗ Planned Secondary Line
- ⊗ Access or Improved Road
- ⊗ Other
- Road Repair
- Aerial Hazard
- Temporary Flight Restriction
- Contained Line
- Wildfire Daily Fire Perimeter
- AirOpsTablePoints\_20210902\_1455

