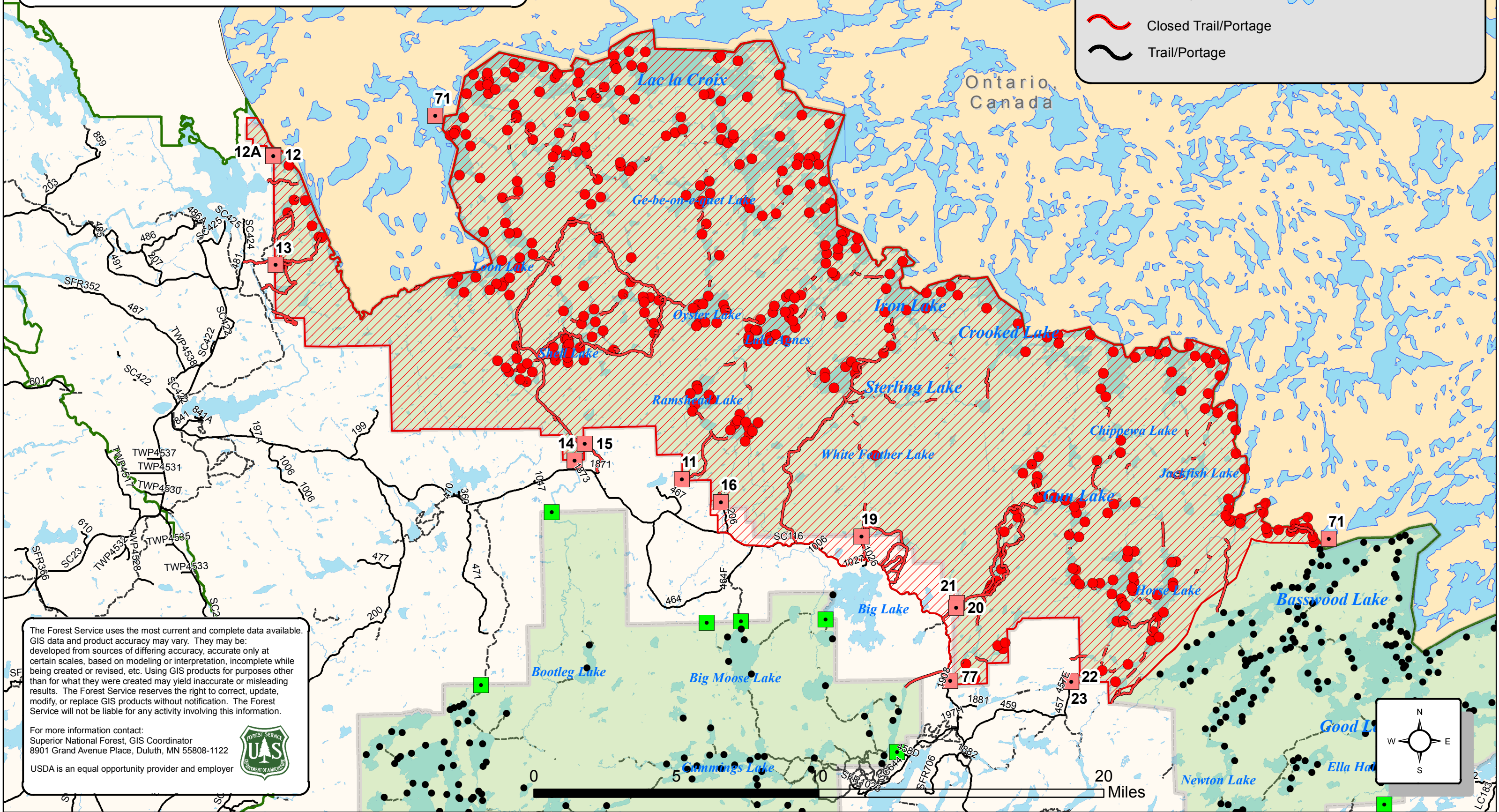


**Superior National Forest
Boundary Waters Canoe Area Wilderness
Emergency Public Safety Closure
Order Number R9-09-21-08, 07/17/2021**

Legend


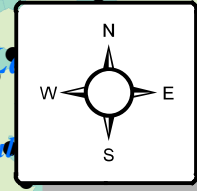
- Closed Campsite
- Campsite
- Open Entry Points
- Closed Entry Points
- Closure Area
- BWCAW
- Lake
- Closed Trail/Portage
- Trail/Portage



The Forest Service uses the most current and complete data available. GIS data and product accuracy may vary. They may be developed from sources of differing accuracy, accurate only at certain scales, based on modeling or interpretation, incomplete while being created or revised, etc. Using GIS products for purposes other than for what they were created may yield inaccurate or misleading results. The Forest Service reserves the right to correct, update, modify, or replace GIS products without notification. The Forest Service will not be liable for any activity involving this information.

For more information contact:
Superior National Forest, GIS Coordinator
8901 Grand Avenue Place, Duluth, MN 55808-1122

USDA is an equal opportunity provider and employer

20 Miles

Ontario
Canada