
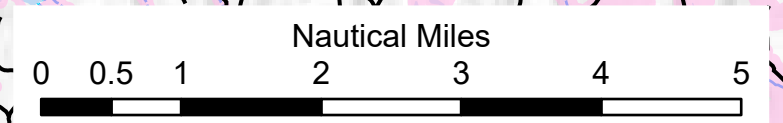
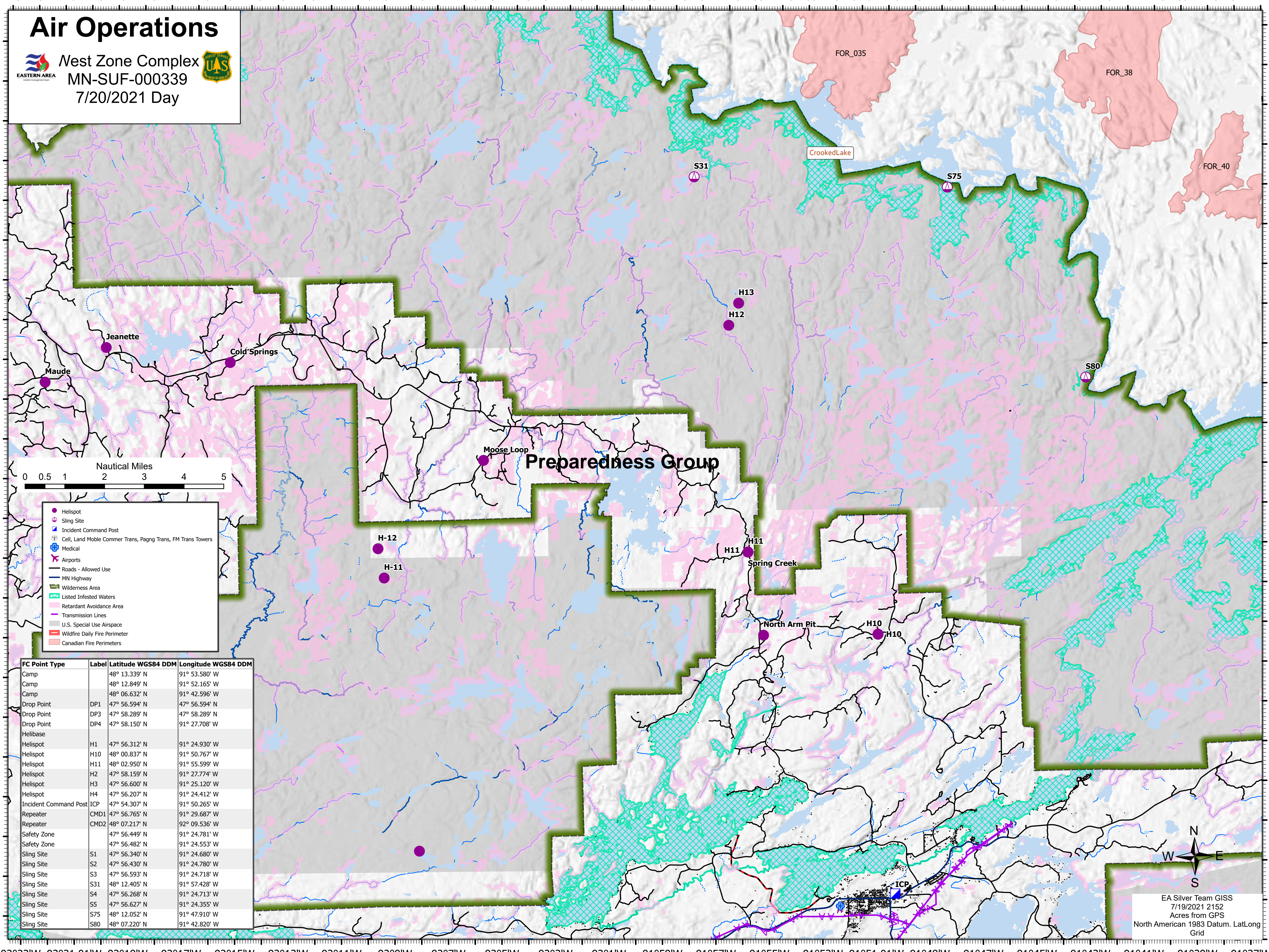


Air Operations


Nest Zone Complex
MN-SUF-000339
 7/20/2021 Day



- Helispot
- △ Sling Site
- Incident Command Post
- Ⓜ Cell, Land Mobile Commer Trans, Paging Trans, FM Trans Towers
- Ⓜ Medical
- ✈ Airports
- Roads - Allowed Use
- MN Highway
- Wilderness Area
- ▨ Listed Infested Waters
- ▨ Retardant Avoidance Area
- Transmission Lines
- ▨ U.S. Special Use Airspace
- ▨ Wildfire Daily Fire Perimeter
- ▨ Canadian Fire Perimeters

FC Point Type	Label	Latitude WGS84 DDM	Longitude WGS84 DDM
Camp		48° 13.339' N	91° 53.580' W
Camp		48° 12.849' N	91° 52.165' W
Camp		48° 06.632' N	91° 42.596' W
Drop Point	DP1	47° 56.594' N	47° 56.594' N
Drop Point	DP3	47° 58.289' N	47° 58.289' N
Drop Point	DP4	47° 58.150' N	91° 27.708' W
Helibase			
Helispot	H1	47° 56.312' N	91° 24.930' W
Helispot	H10	48° 00.837' N	91° 50.767' W
Helispot	H11	48° 02.950' N	91° 55.599' W
Helispot	H2	47° 58.159' N	91° 27.774' W
Helispot	H3	47° 56.600' N	91° 25.120' W
Helispot	H4	47° 56.207' N	91° 24.412' W
Incident Command Post	ICP	47° 54.307' N	91° 50.265' W
Repeater	CMD1	47° 56.765' N	91° 29.687' W
Repeater	CMD2	48° 07.217' N	92° 09.536' W
Safety Zone		47° 56.449' N	91° 24.781' W
Safety Zone		47° 56.482' N	91° 24.553' W
Sling Site	S1	47° 56.340' N	91° 24.680' W
Sling Site	S2	47° 56.430' N	91° 24.780' W
Sling Site	S3	47° 56.593' N	91° 24.718' W
Sling Site	S31	48° 12.405' N	91° 57.428' W
Sling Site	S4	47° 56.268' N	91° 24.713' W
Sling Site	S5	47° 56.627' N	91° 24.355' W
Sling Site	S75	48° 12.052' N	91° 47.910' W
Sling Site	S80	48° 07.220' N	91° 42.820' W

EA Silver Team GIS
 7/19/2021 2152
 Acres from GPS
 North American 1983 Datum, LatLong
 Grid