

Air Operations

Delta Lake
MN-SUF-000333

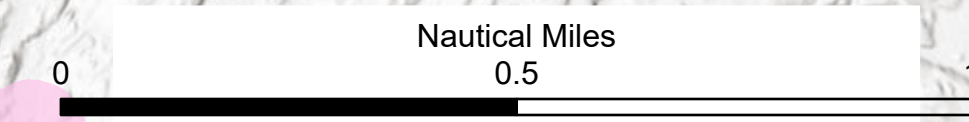
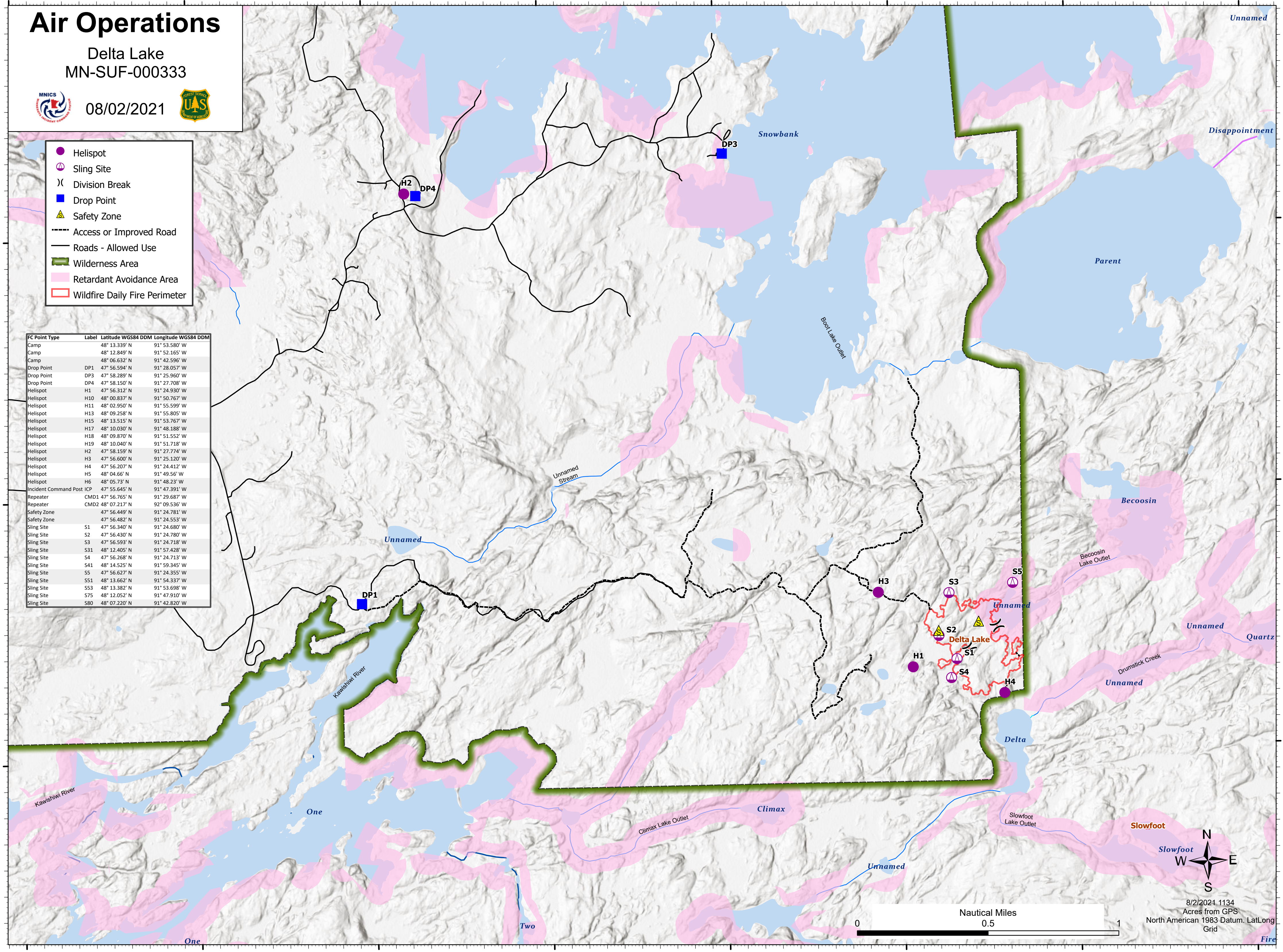


08/02/2021



- Helispot
- ⊕ Sling Site
- ⌘ Division Break
- Drop Point
- ▲ Safety Zone
- - - - Access or Improved Road
- Roads - Allowed Use
- ▬ Wilderness Area
- ▭ Retardant Avoidance Area
- ▭ Wildfire Daily Fire Perimeter

FC Point Type	Label	Latitude WGS84 DDM	Longitude WGS84 DDM
Camp		48° 13.339' N	91° 53.580' W
Camp		48° 12.849' N	91° 52.165' W
Camp		48° 06.632' N	91° 42.596' W
Drop Point	DP1	47° 56.594' N	91° 28.057' W
Drop Point	DP3	47° 58.289' N	91° 25.960' W
Drop Point	DP4	47° 58.150' N	91° 27.708' W
Helispot	H1	47° 56.312' N	91° 24.930' W
Helispot	H10	48° 00.837' N	91° 50.767' W
Helispot	H11	48° 02.950' N	91° 55.599' W
Helispot	H13	48° 09.258' N	91° 55.805' W
Helispot	H15	48° 13.515' N	91° 53.767' W
Helispot	H17	48° 10.030' N	91° 48.188' W
Helispot	H18	48° 09.870' N	91° 51.552' W
Helispot	H19	48° 10.040' N	91° 51.718' W
Helispot	H2	47° 58.159' N	91° 27.774' W
Helispot	H3	47° 56.600' N	91° 25.120' W
Helispot	H4	47° 56.207' N	91° 24.412' W
Helispot	H5	48° 04.66' N	91° 49.56' W
Helispot	H6	48° 05.73' N	91° 48.23' W
Incident Command Post	ICP	47° 55.645' N	91° 47.391' W
Repeater	CMD1	47° 56.765' N	91° 29.687' W
Repeater	CMD2	48° 07.217' N	92° 09.536' W
Safety Zone		47° 56.449' N	91° 24.781' W
Safety Zone		47° 56.482' N	91° 24.553' W
Sling Site	S1	47° 56.340' N	91° 24.680' W
Sling Site	S2	47° 56.430' N	91° 24.780' W
Sling Site	S3	47° 56.593' N	91° 24.718' W
Sling Site	S31	48° 12.405' N	91° 57.428' W
Sling Site	S4	47° 56.268' N	91° 24.713' W
Sling Site	S41	48° 14.525' N	91° 59.345' W
Sling Site	S5	47° 56.627' N	91° 24.355' W
Sling Site	S51	48° 13.662' N	91° 54.337' W
Sling Site	S53	48° 13.382' N	91° 53.698' W
Sling Site	S75	48° 12.052' N	91° 47.910' W
Sling Site	S80	48° 07.220' N	91° 42.820' W



8/2/2021 1134
Acres from GPS
North American 1983 Datum, LatLong
Grid