

Structure Protection



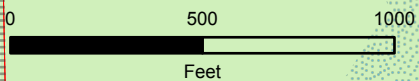
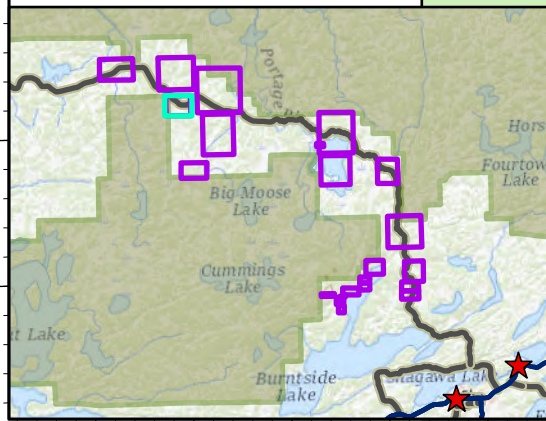
Page 3 of 24

West Zone Complex
MN-SUF-000339

62 acres at 7/20/21 19:00

- SLC Address Points
- Util_CommSite_SpecUse
- State Aid Road
- Gravel Road
- Road, Not Maintained for Passenger Car
- Local Roads
- St. Louis County Evacuation Zones

Map Extent



7/25/2021 1706
North American 1983

ZONE C

