

# Structure Protection



Page 5 of 24

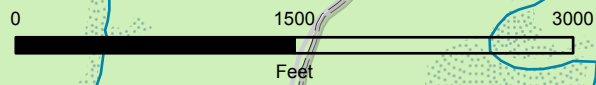
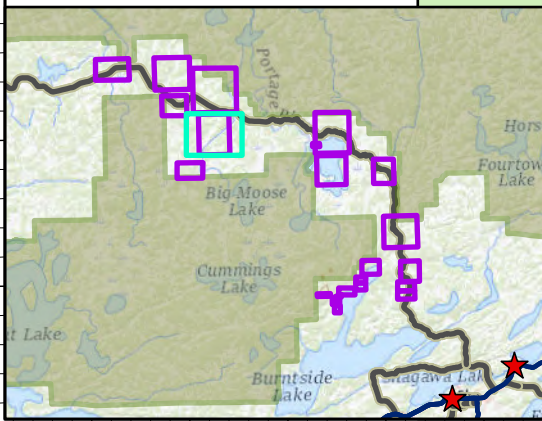
West Zone Complex  
MN-SUF-000339

62 acres at 7/20/21 19:00

- Non-Defensible - Prep and Leave
- Non-Defensible - Rescue Drive-By
- SLC Address Points
- Trailhead
- State Aid Road
- TrailNFS\_Publish
- Gravel Road
- Road, Not Maintained for Passenger Car
- Local Roads
- St. Louis County Evacuation Zones

# ZONE C

Map Extent



7/25/2021 1707  
North American 1983

