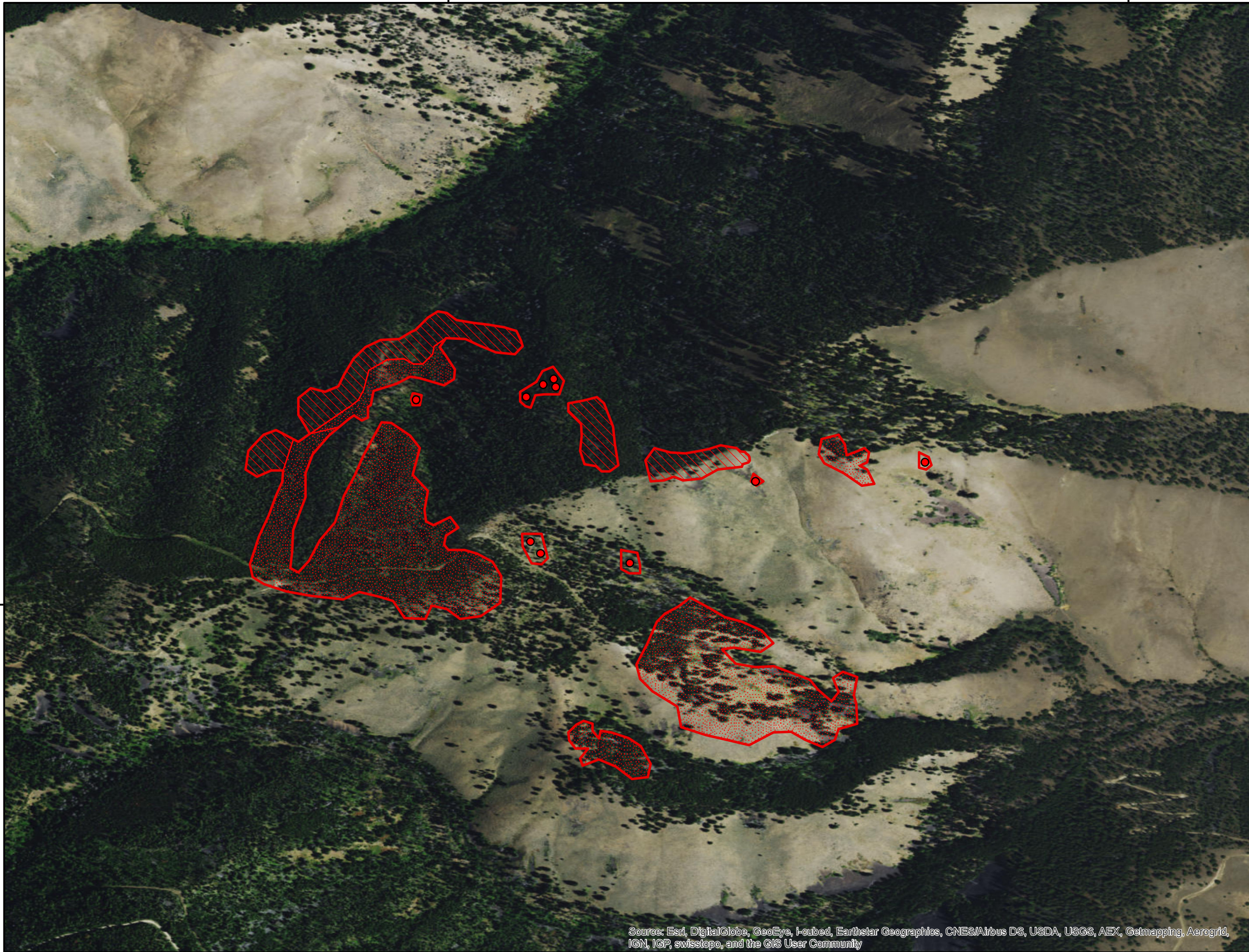






113°58'W

113°57'W



Bobcat Fire Infrared Heat Sources

1:10,000

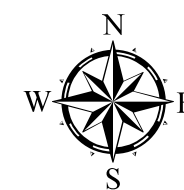
-  Heat Perimeter
-  Intense Heat Areas
-  Scattered Heat Areas
-  Isolated Heat Sources

GCS North American 1983

45°20'N

45°20'N

0 0.075 0.15 0.3 Miles



IR Interpreter: Brian Monroe
 IR interpreted acres: 79
 Date: 08/19/2015
 Time received the Image: 0248 hrs

Source: Esri, DigitalGlobe, GeoEye, I-cubed, Earthstar Geographics, CNES/Airbus DS, USDA, USGS, AEX, Getmapping, Aerogrid, IGN, IGP, swisstopo, and the GIS User Community

113°58'W

113°57'W