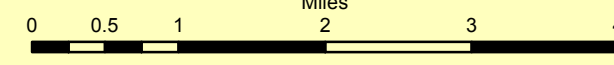
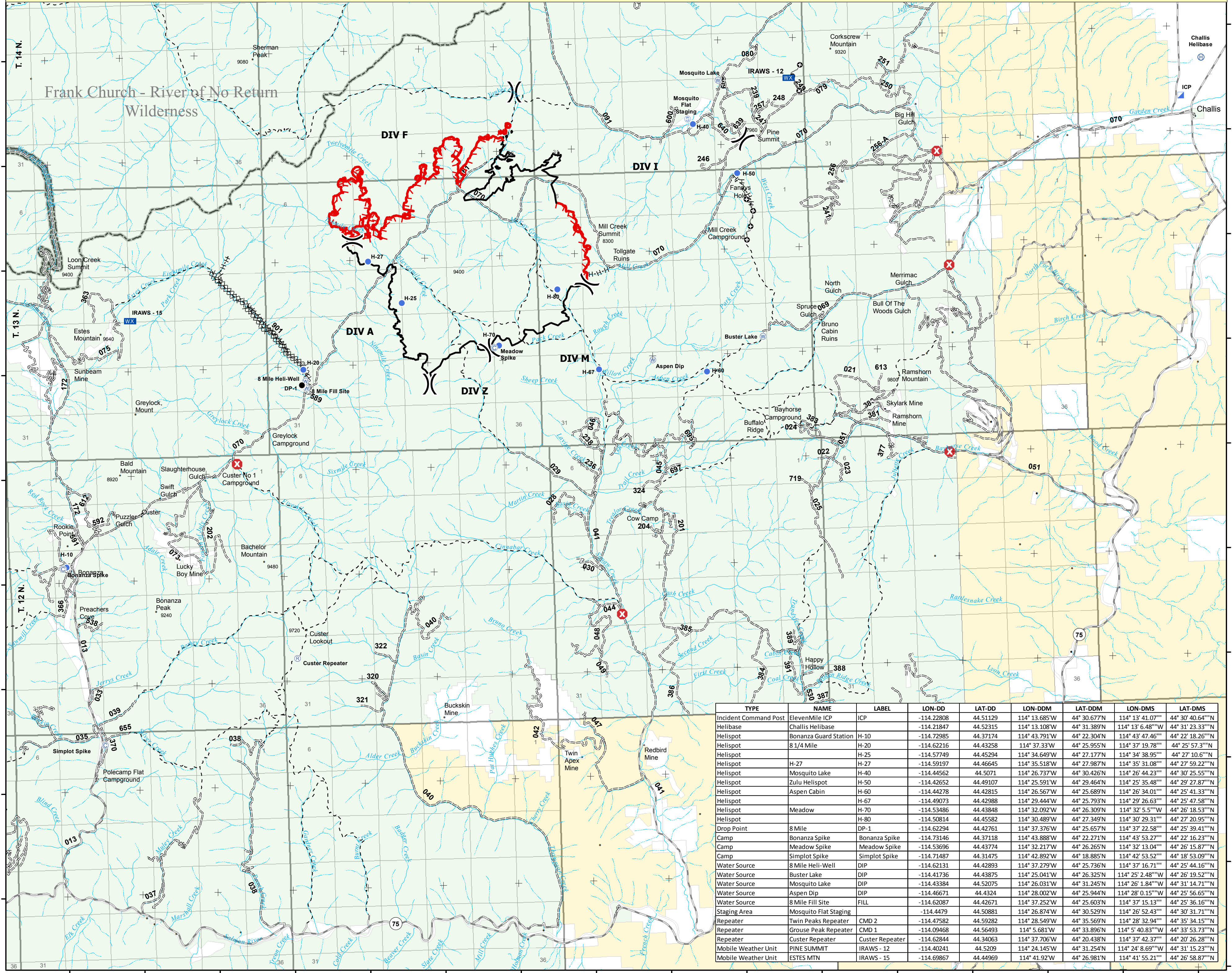


Eleven Mile Fire ID-SCF-015218 Transportation Map September 9, 2015 10,387 Acres

	Uncontrolled Fire Edge		Helibase
	Completed Line		Helispot
	H-H-H Hand Line		Incident Command Post
	Dozer Line		Repeater
	Division Break		Staging Area
	Road Closure		Water Source
	Camp		BLM
	Drop Point		PVT
			USFS



All data depicted on this map has been projected to the Universal Transverse Mercator coordinate system (Zone 11) using the NAD 1983 datum.



TYPE	NAME	LABEL	LONG-DEC	LAT-DEC	LONG-DM	LAT-DM	LONG-DMS	LAT-DMS
Incident Command Post	ElevenMile ICP	ICP	-114.22808	44.51129	114° 13.685'W	44° 30.677'N	114° 13' 41.07" W	44° 30' 40.64" N
Helibase	Challis Helibase		-114.21847	44.52315	114° 13.108'W	44° 31.389'N	114° 13' 6.48" W	44° 31' 23.33" N
Helispot	Bonanza Guard Station	H-10	-114.72985	44.37174	114° 43.791'W	44° 22.304'N	114° 43' 47.46" W	44° 22' 18.26" N
Helispot	8 1/4 Mile	H-20	-114.62216	44.43258	114° 37.333'W	44° 25.955'N	114° 37' 19.78" W	44° 25' 57.3" N
Helispot	H-25	H-25	-114.57749	44.45294	114° 34.649'W	44° 27.177'N	114° 34' 38.95" W	44° 27' 10.6" N
Helispot	H-27	H-27	-114.59197	44.46645	114° 35.518'W	44° 27.987'N	114° 35' 31.08" W	44° 27' 59.22" N
Helispot	Mosquito Lake	H-40	-114.44562	44.5071	114° 26.737'W	44° 30.426'N	114° 26' 44.23" W	44° 30' 25.55" N
Helispot	Zulu Helispot	H-50	-114.42652	44.49107	114° 25.991'W	44° 29.464'N	114° 25' 35.48" W	44° 29' 27.87" N
Helispot	Aspen Cabin	H-60	-114.44278	44.42815	114° 26.567'W	44° 25.689'N	114° 26' 34.01" W	44° 25' 41.33" N
Helispot	H-67	H-67	-114.49073	44.42988	114° 29.444'W	44° 25.793'N	114° 29' 26.63" W	44° 25' 47.58" N
Helispot	Meadow	H-70	-114.53486	44.43848	114° 32.092'W	44° 26.309'N	114° 32' 5.5" W	44° 26' 18.53" N
Helispot	H-80	H-80	-114.50814	44.45582	114° 30.489'W	44° 27.349'N	114° 30' 29.31" W	44° 27' 20.95" N
Drop Point	8 Mile	DP-1	-114.62294	44.42761	114° 37.376'W	44° 25.657'N	114° 37' 22.58" W	44° 25' 39.41" N
Camp	Bonanza Spike	Bonanza Spike	-114.73146	44.37118	114° 43.888'W	44° 22.271'N	114° 43' 53.27" W	44° 22' 16.23" N
Camp	Meadow Spike	Meadow Spike	-114.53696	44.43774	114° 32.217'W	44° 26.265'N	114° 32' 13.04" W	44° 26' 15.87" N
Camp	Simplot Spike	Simplot Spike	-114.71487	44.31475	114° 42.892'W	44° 18.885'N	114° 42' 53.52" W	44° 18' 53.09" N
Water Source	8 Mile Heli-Well	DIP	-114.62131	44.42893	114° 37.279'W	44° 25.736'N	114° 37' 16.71" W	44° 25' 44.16" N
Water Source	Buster Lake	DIP	-114.41736	44.43875	114° 25.041'W	44° 26.325'N	114° 25' 2.48" W	44° 26' 19.52" N
Water Source	Mosquito Lake	DIP	-114.43384	44.52075	114° 26.031'W	44° 31.245'N	114° 26' 1.84" W	44° 31' 14.71" N
Water Source	Aspen Dip	DIP	-114.46671	44.4324	114° 28.002'W	44° 25.944'N	114° 28' 0.15" W	44° 25' 56.65" N
Water Source	8 Mile Fill Site	FILL	-114.62087	44.42671	114° 37.252'W	44° 25.603'N	114° 37' 15.13" W	44° 25' 36.16" N
Staging Area	Mosquito Flat Staging		-114.4479	44.50881	114° 26.874'W	44° 30.529'N	114° 26' 52.43" W	44° 30' 31.71" N
Repeater	Twin Peaks Repeater	CMD 2	-114.47582	44.59282	114° 28.549'W	44° 35.569'N	114° 28' 32.94" W	44° 35' 34.15" N
Repeater	Grouse Peak Repeater	CMD 1	-114.09468	44.56493	114° 5.681'W	44° 33.896'N	114° 5' 40.83" W	44° 33' 53.73" N
Repeater	Custer Repeater	Custer Repeater	-114.62844	44.34063	114° 37.706'W	44° 20.438'N	114° 37' 42.37" W	44° 20' 26.28" N
Mobile Weather Unit	PINE SUMMIT	IRAWS - 12	-114.40241	44.5209	114° 24.145'W	44° 31.254'N	114° 24' 8.69" W	44° 31' 15.23" N
Mobile Weather Unit	ESTES MTN	IRAWS - 15	-114.69867	44.44969	114° 41.92'W	44° 26.981'N	114° 41' 55.21" W	44° 26' 58.87" N